



# Colorado Secretary of State

2020 General Election Ballot Return Reporting

## Total Ballots Returned

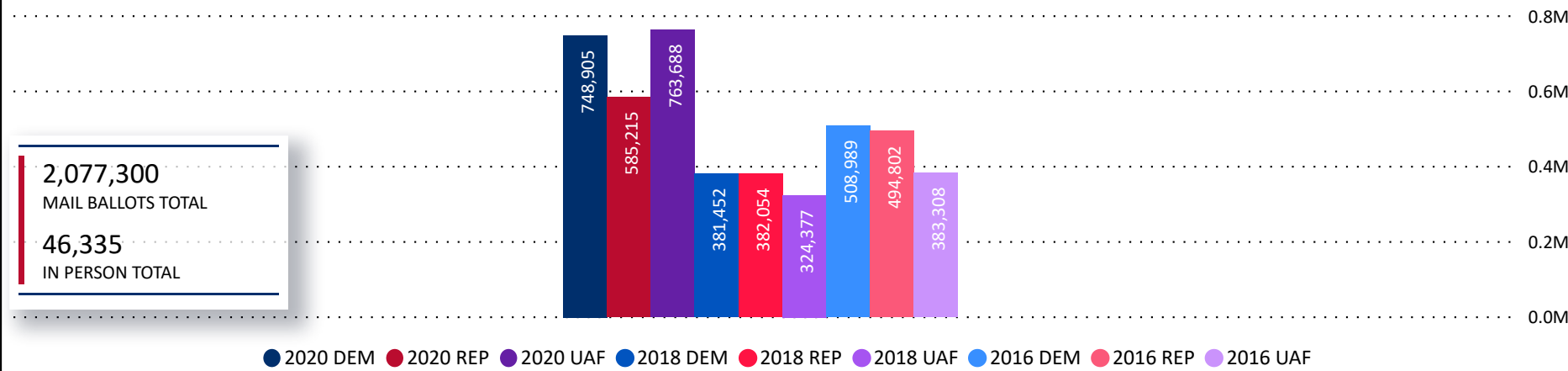
(as of October 28, 2020)

2,123,635

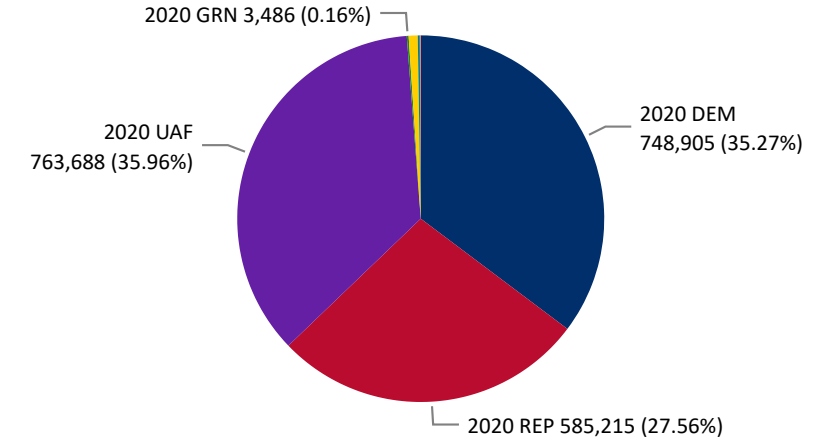
October 29, 2020

6 Days Out from Election Day

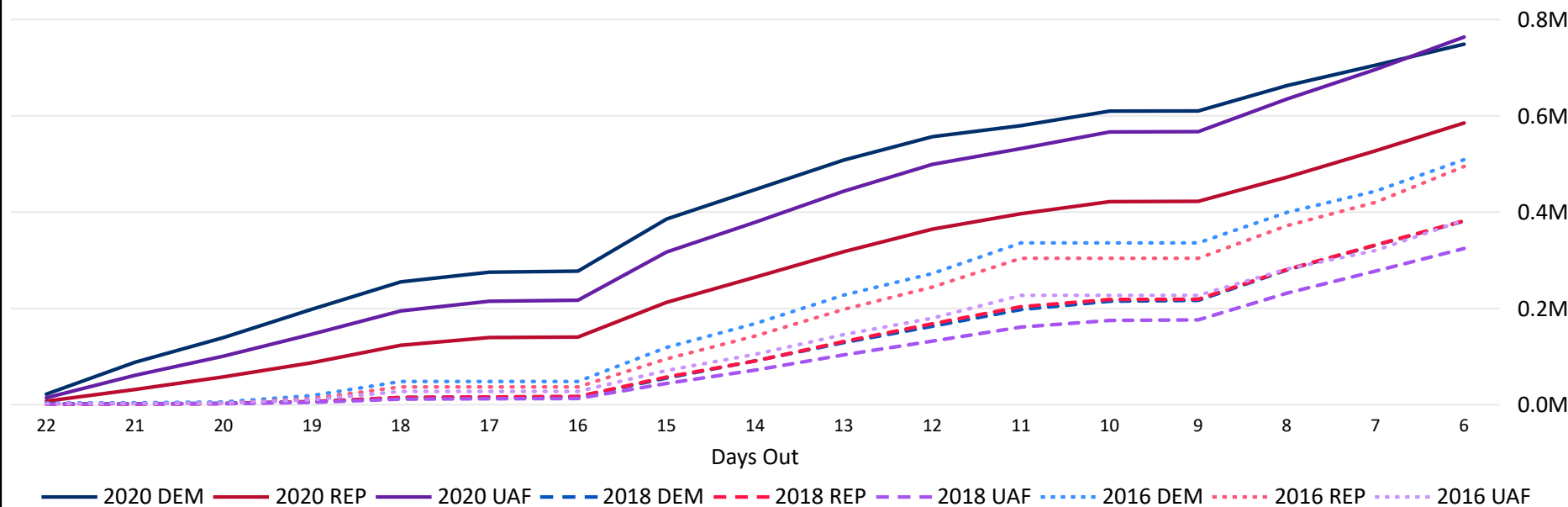
Ballots Returned 6 Days Out by Major Party Registration



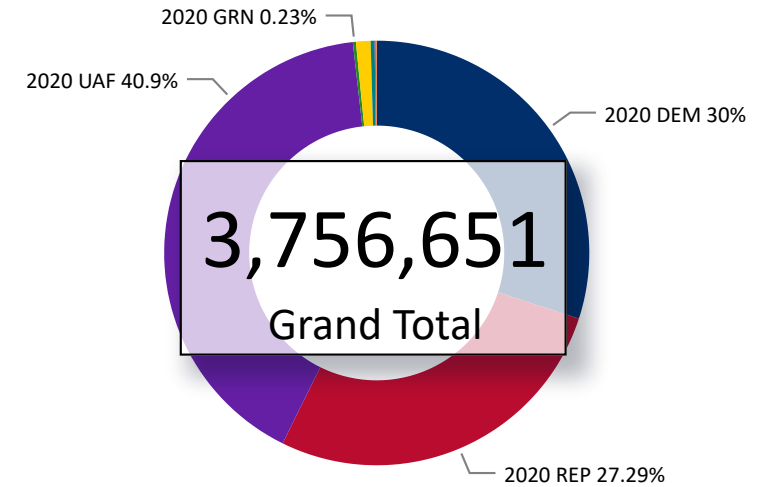
Ballots Returned by Party Registration



Trend Line of Ballots Returned by Day 2016, 2018 & 2020 by Major Party Registration



Percent of Total Active Voters by Party Registration



# Total Ballots Returned

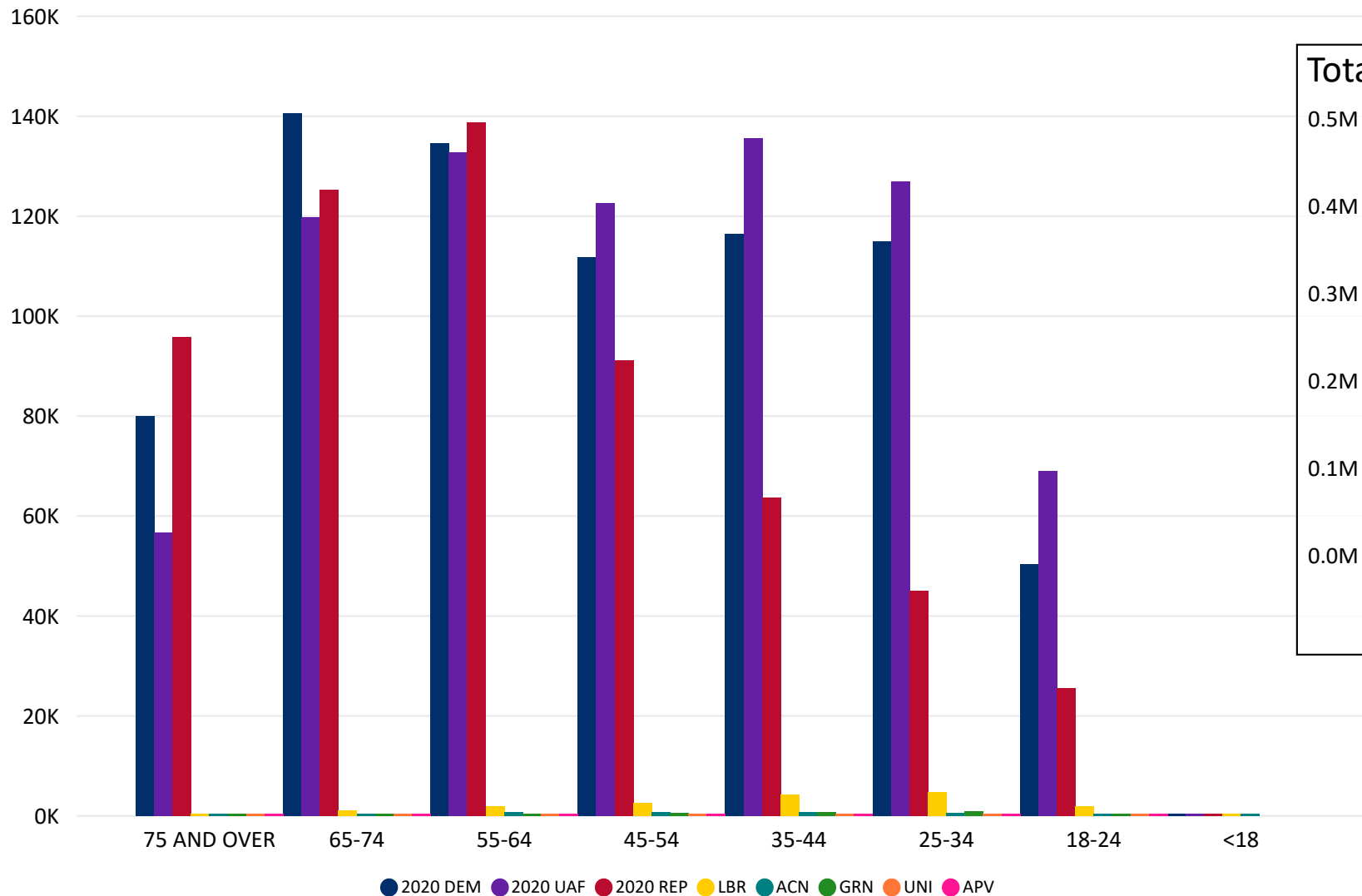
(as of October 28, 2020)

2,123,635

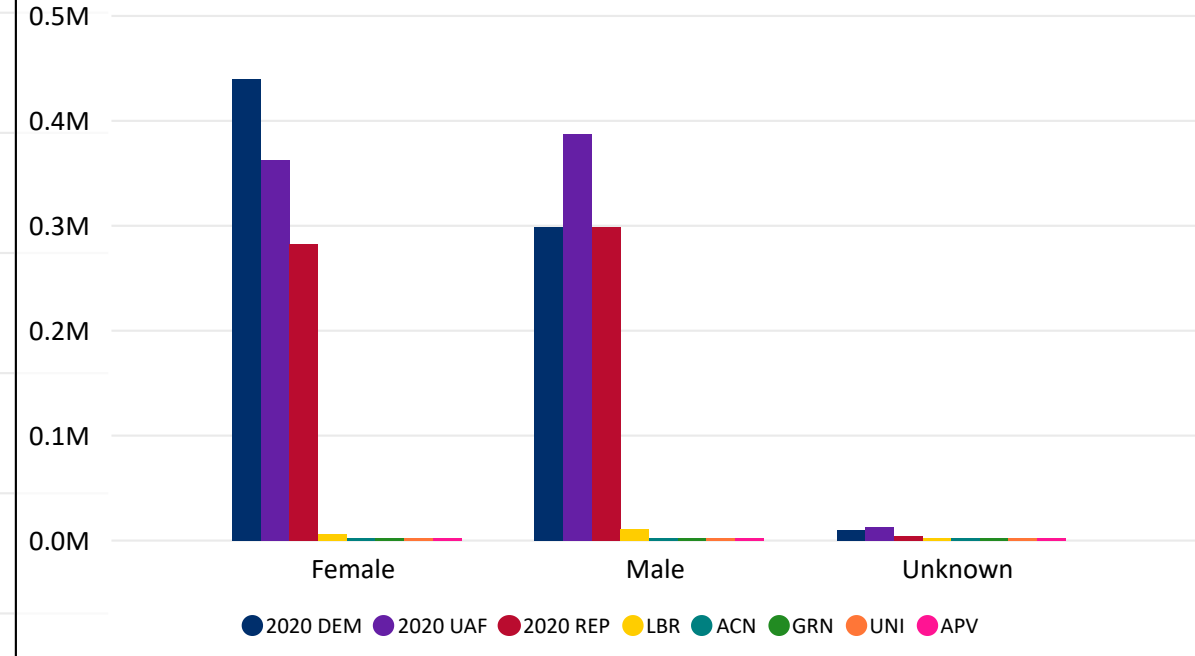
October 29, 2020

6 Days Out from Election Day

Ballot Type Returned by Age Range



Total Ballots Returned by Gender



# Total Ballots Returned

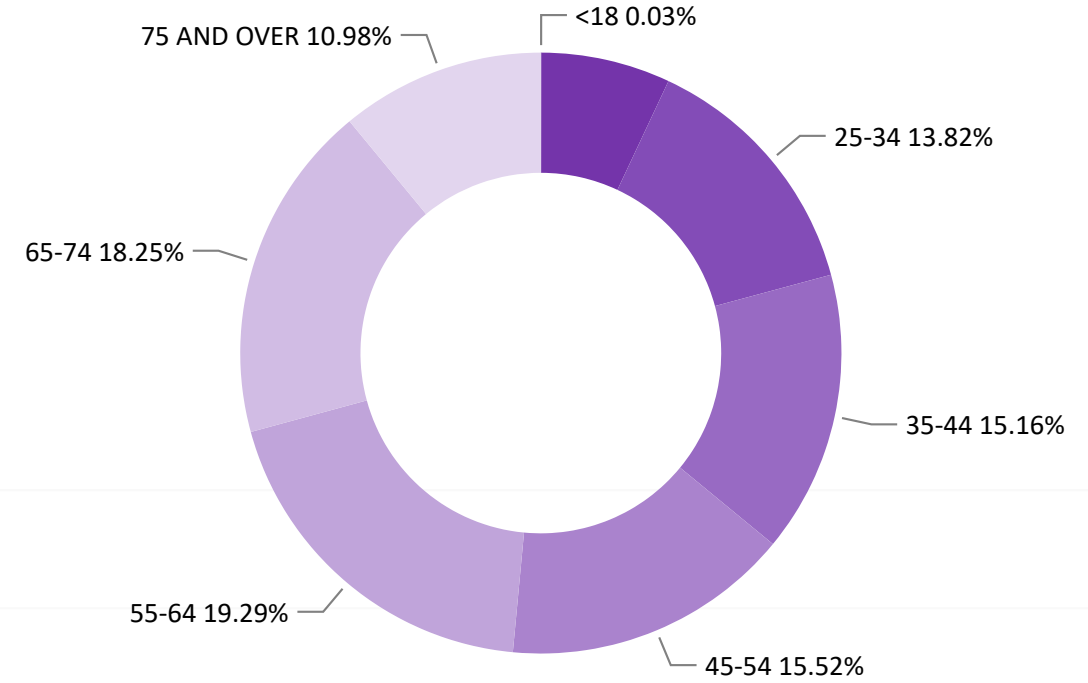
(as of October 28, 2020)

## 2,123,635

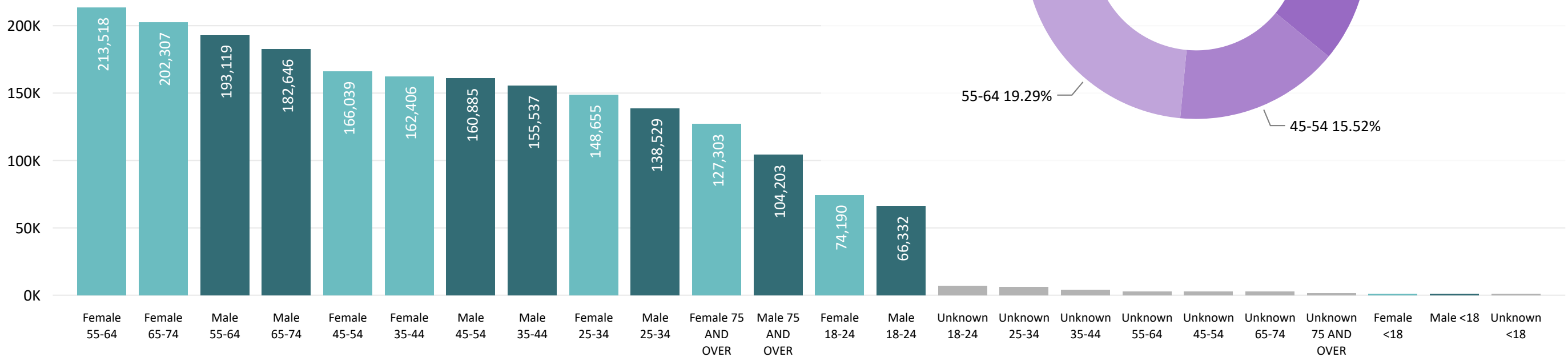
**October 29, 2020**

6 Days Out from Election Day

Ballots Returned by Age Range



Ballots Returned by Gender/Age Range



# Total Ballots Returned

(as of October 28, 2020)

## 2,123,635

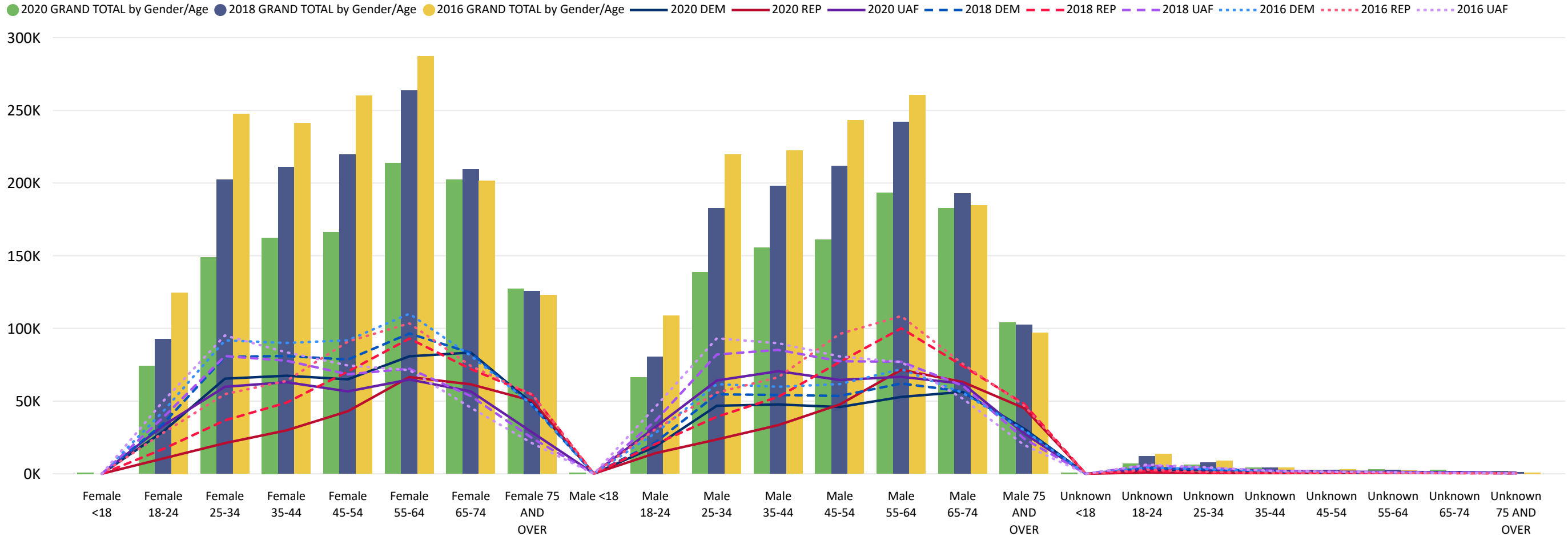
**October 29, 2020**

6 Days Out from Election Day

**2020 General Election** Ballot Return Reporting:  
 Comparison of 2020, 2018, & 2016 by Gender and Age  
 & Major Party

Chart reflects current totals for 2020  
 and final totals from 2018 & 2016

Comparison of Ballots Returned by Gender/Age Range & Major Party 2020, 2018, & 2016



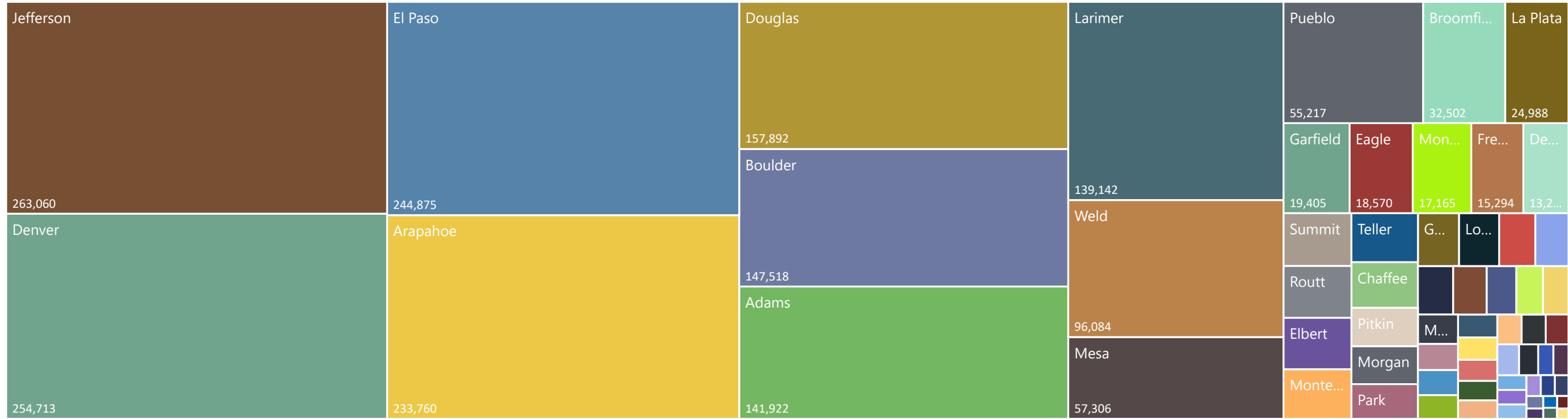
# Total Ballots Returned

(as of October 28, 2020)

October 29, 2020

2020 General Election Ballot Return Reporting: by County **2,123,635**

6 Days Out from Election Day



141,922	4,698	233,760	6,242	1,404	1,382	147,518	32,502	9,906	689
Adams	Alamosa	Arapahoe	Archuleta	Baca	Bent	Boulder	Broomfield	Chaffee	Cheyenne
4,033	2,713	1,354	976	2,368	13,248	254,713	930	157,892	18,570
Clear Creek	Conejos	Costilla	Crowley	Custer	Delta	Denver	Dolores	Douglas	Eagle
244,875	11,432	15,294	19,405	2,482	5,573	7,092	467	2,931	563
El Paso	Elbert	Fremont	Garfield	Gilpin	Grand	Gunnison	Hinsdale	Huerfano	Jackson
263,060	495	2,211	24,988	2,346	139,142	5,276	1,518	6,893	57,306
Jefferson	Kiowa	Kit Carson	La Plata	Lake	Larimer	Las Animas	Lincoln	Logan	Mesa
525	3,851	10,955	17,165	8,234	5,697	2,867	7,504	1,526	8,314
Mineral	Moffat	Montezuma	Montrose	Morgan	Otero	Ouray	Park	Phillips	Pitkin
3,293	55,217	2,359	4,200	11,495	2,187	378	3,400	947	11,664
Prowers	Pueblo	Rio Blanco	Rio Grande	Routt	Saguache	San Juan	San Miguel	Sedgwick	Summit
10,599	1,915	96,084	3,090						
Teller	Washington	Weld	Yuma						