

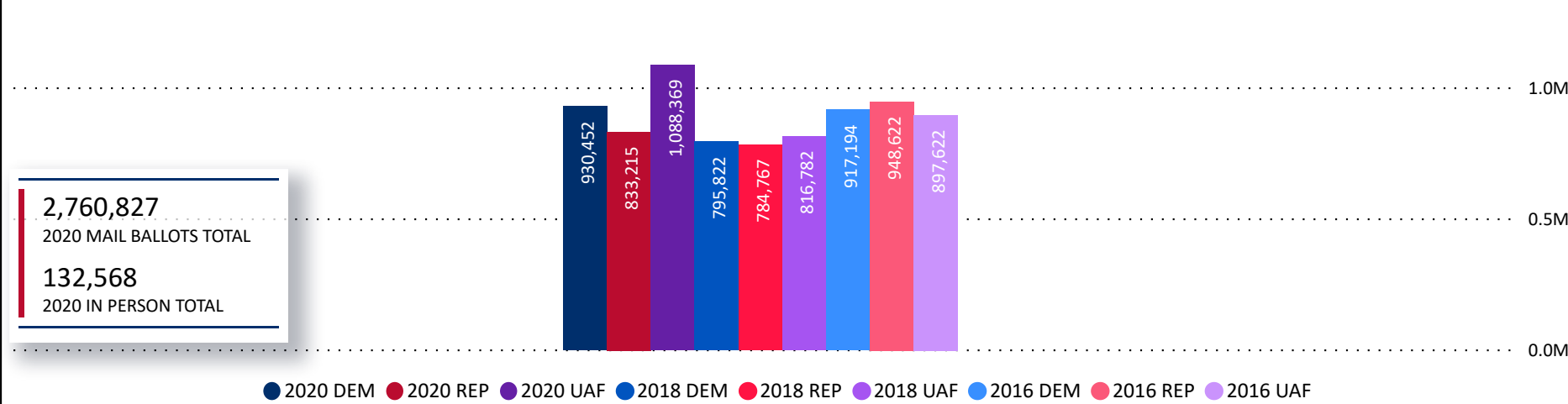
Total Ballots Returned

AS OF NOVEMBER 3 AS OF 10:00 AM

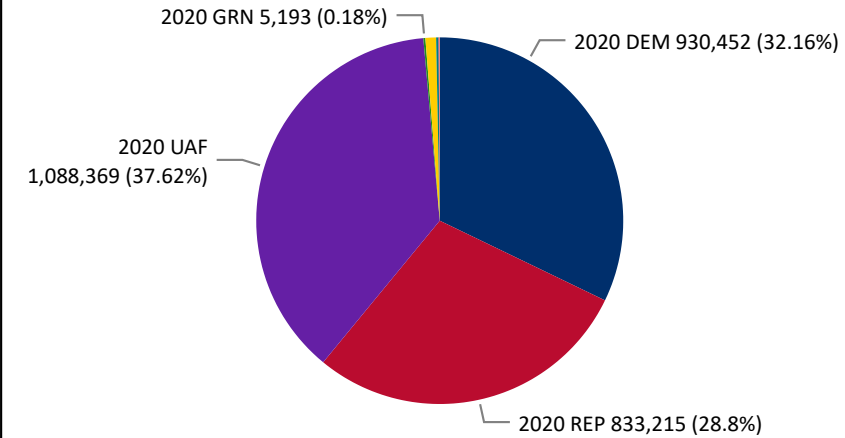
2,893,395

November 3, 2020
ELECTION DAY

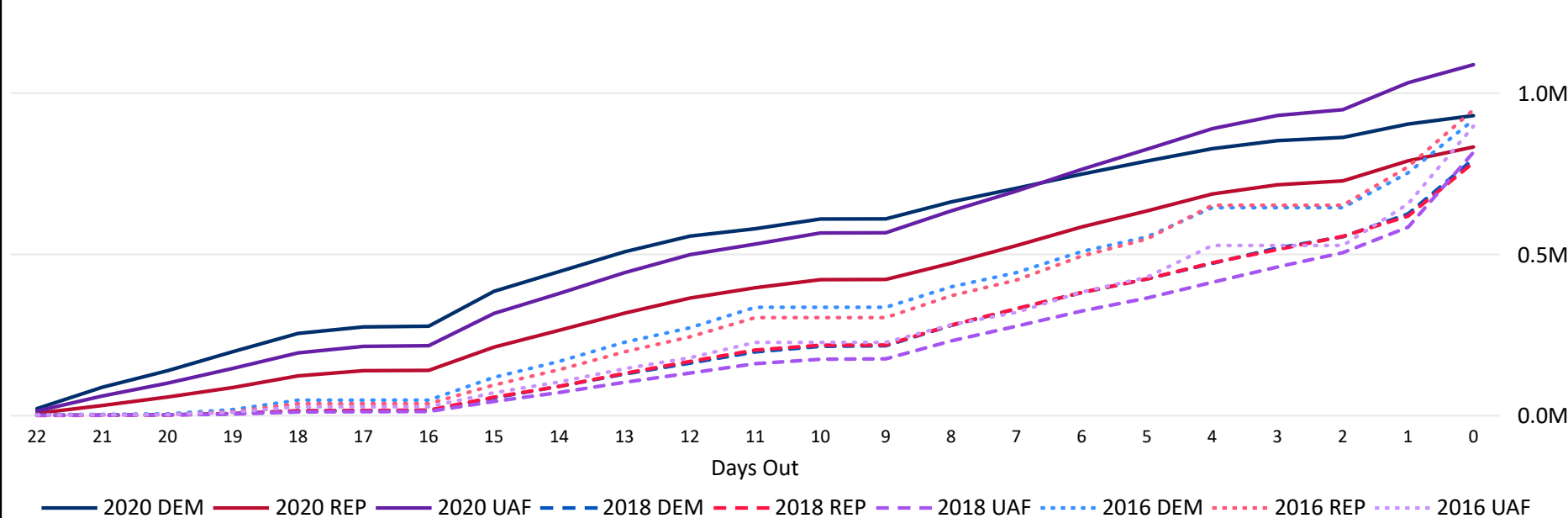
Ballots Returned Election Day at 10:00 AM by Major Party Registration



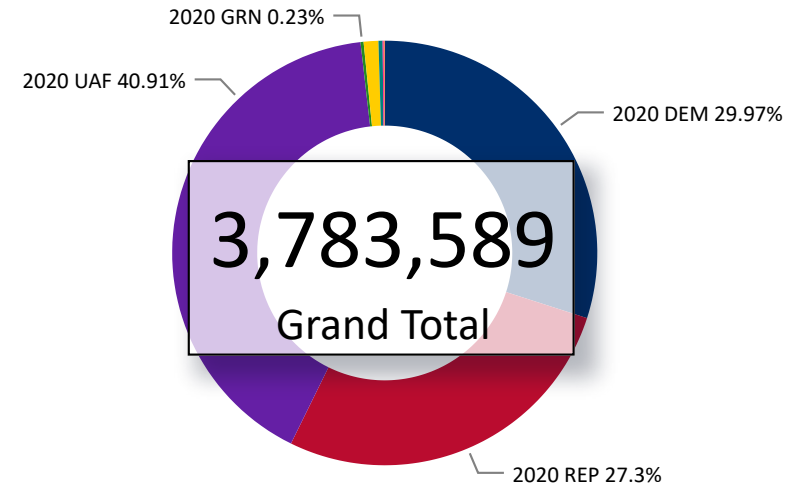
Ballots Returned by Party Registration



Trend Line of Ballots Returned by Day 2016, 2018 & 2020 by Major Party Registration



Percent of Total Active Voters by Party Registration



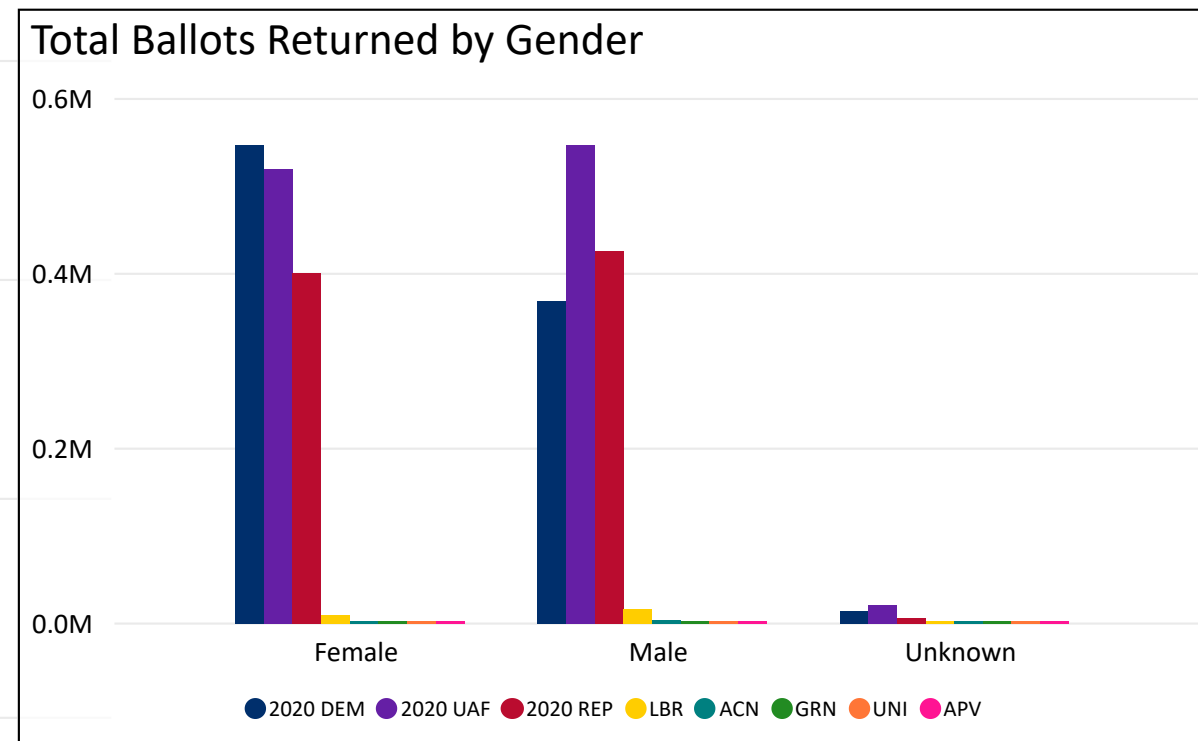
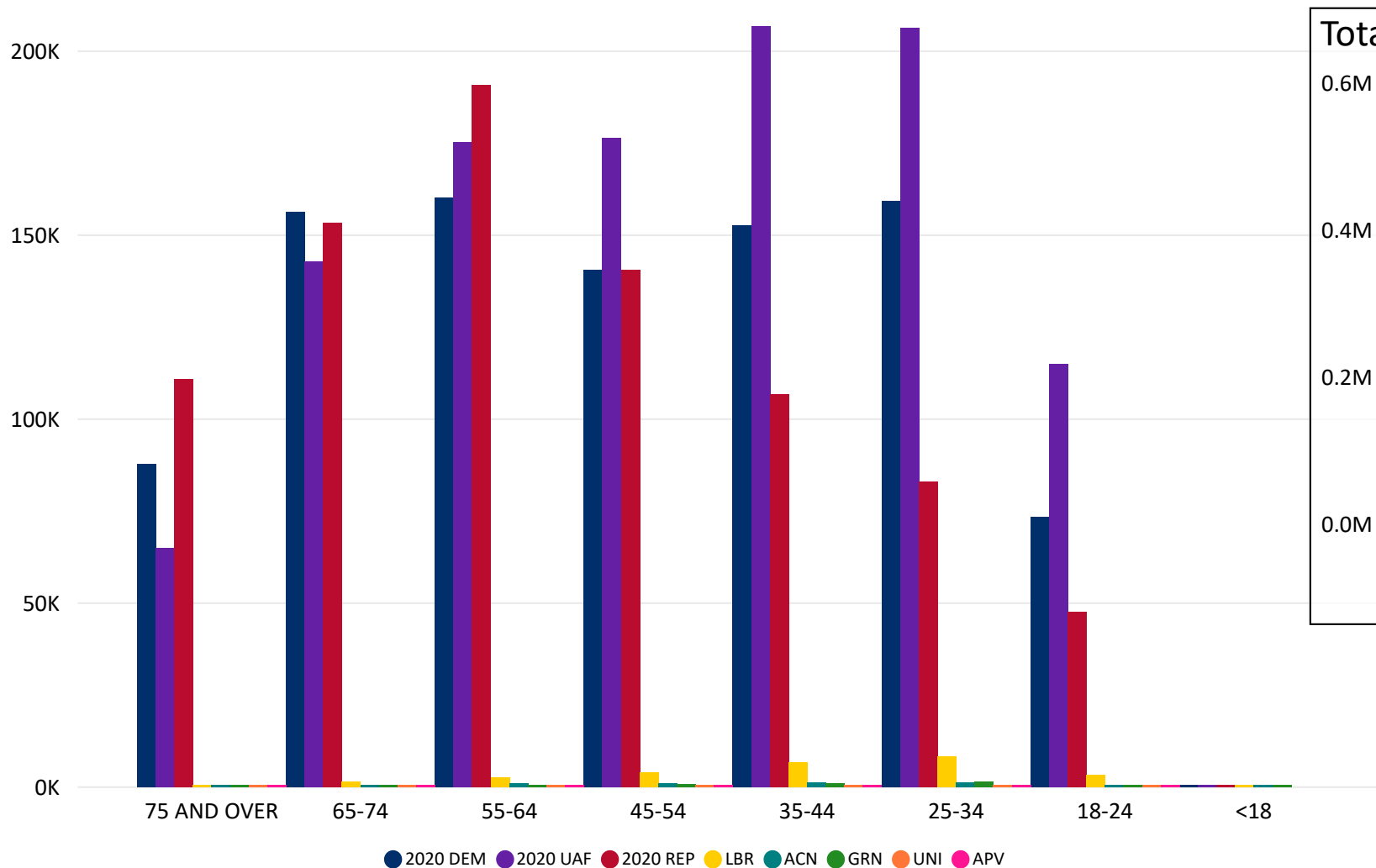
Total Ballots Returned

AS OF NOVEMBER 3 AS OF 10:00 AM

2,893,395

November 3, 2020
ELECTION DAY

Ballot Type Returned by Age Range



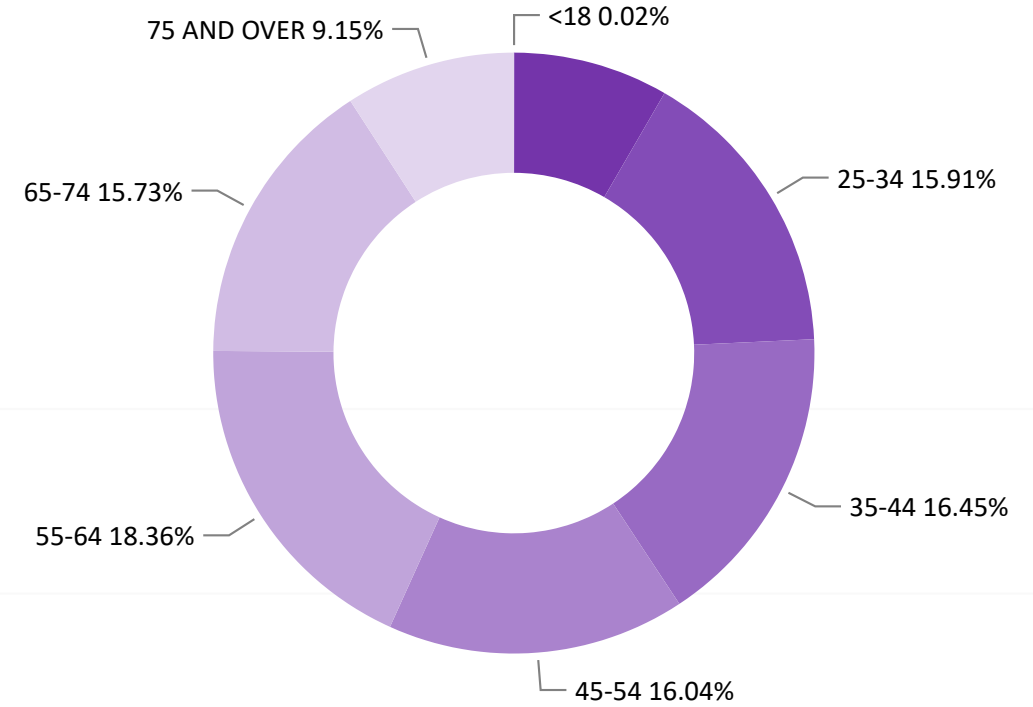
Total Ballots Returned

AS OF NOVEMBER 3 AS OF 10:00 AM

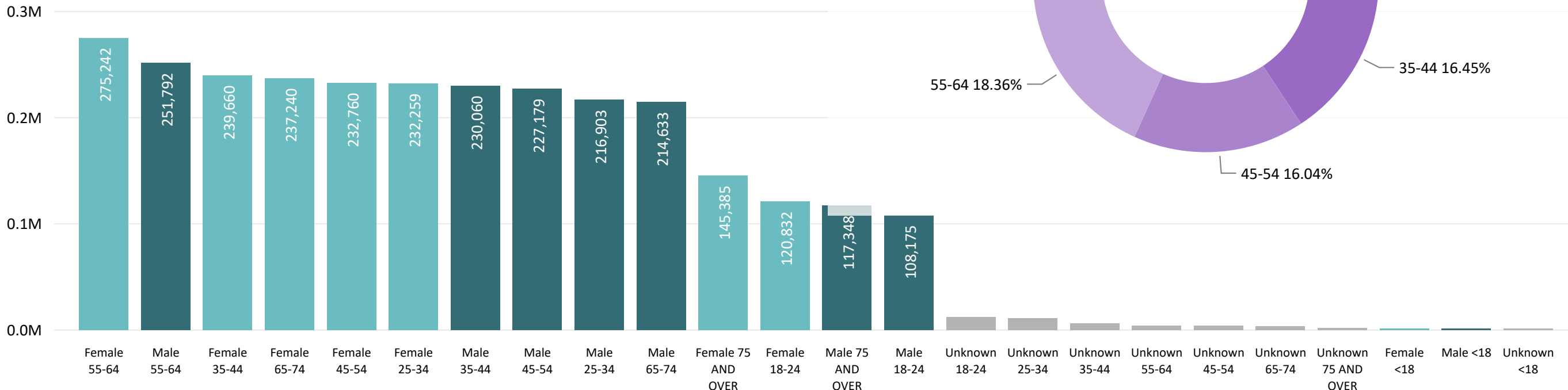
2,893,395

November 3, 2020
ELECTION DAY

Ballots Returned by Age Range



Ballots Returned by Gender/Age Range



Total Ballots Returned

AS OF NOVEMBER 3 AS OF 10:00 AM

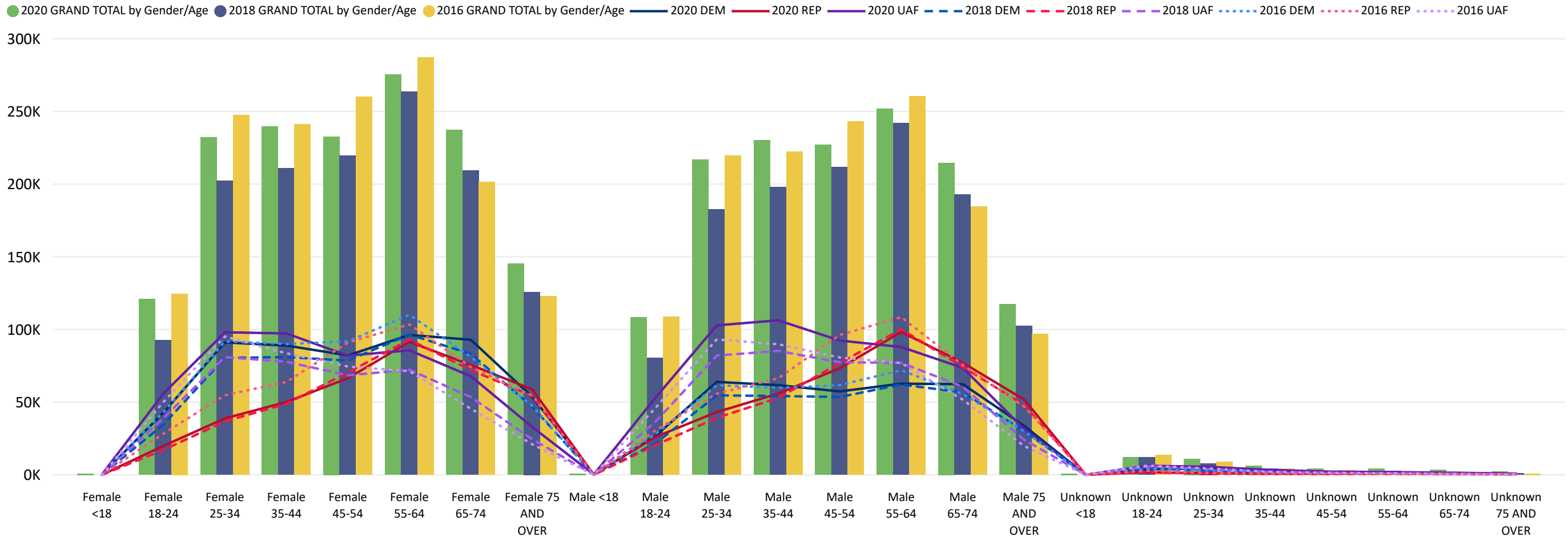
November 3, 2020
ELECTION DAY

2020 General Election Ballot Return Reporting:
Comparison of 2020, 2018, & 2016 by Gender and Age
& Major Party

2,893,395

Chart reflects current totals for 2020
and final totals from 2018 & 2016

Comparison of Ballots Returned by Gender/Age Range & Major Party 2020, 2018, & 2016

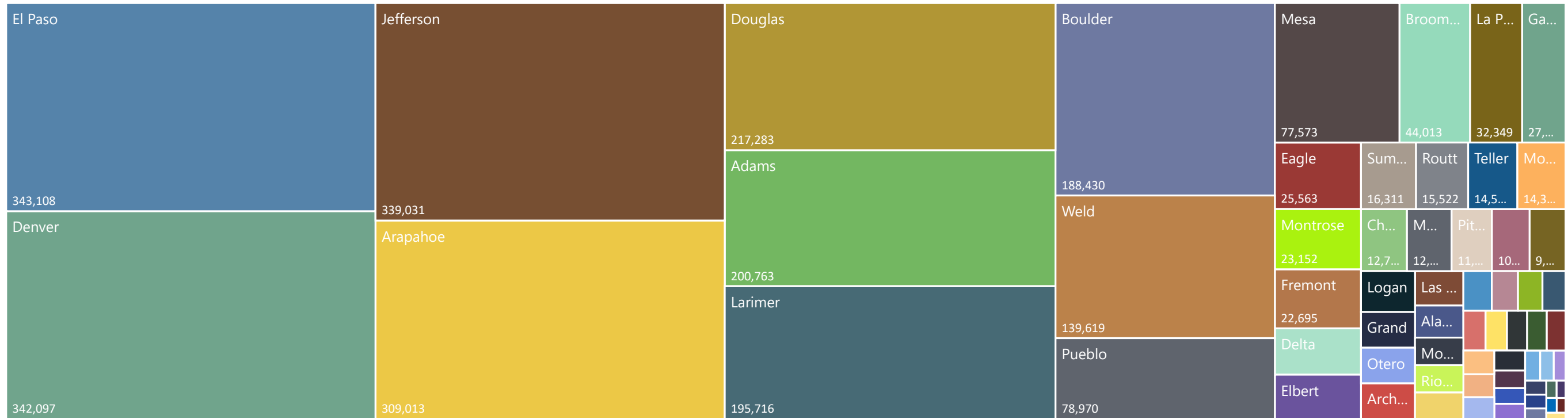


Total Ballots Returned

AS OF NOVEMBER 3 AS OF 10:00 AM

November 3, 2020
ELECTION DAY

2020 General Election Ballot Return Reporting: by County **2,893,395**



200,763	6,957	309,013	8,557	2,031	2,058	188,430	44,013	12,721	984
Adams	Alamosa	Arapahoe	Archuleta	Baca	Bent	Boulder	Broomfield	Chaffee	Cheyenne
5,705	3,952	1,825	1,584	3,188	17,816	342,097	1,331	217,283	25,563
Clear Creek	Conejos	Costilla	Crowley	Custer	Delta	Denver	Dolores	Douglas	Eagle
343,108	16,951	22,695	27,075	3,521	8,630	9,965	583	4,082	700
El Paso	Elbert	Fremont	Garfield	Gilpin	Grand	Gunnison	Hinsdale	Huerfano	Jackson
339,031	790	3,340	32,349	3,585	195,716	7,403	2,427	9,815	77,573
Jefferson	Kiowa	Kit Carson	La Plata	Lake	Larimer	Las Animas	Lincoln	Logan	Mesa
686	5,949	14,356	23,152	12,360	8,570	3,787	10,447	2,150	11,132
Mineral	Moffat	Montezuma	Montrose	Morgan	Otero	Ouray	Park	Phillips	Pitkin
5,013	78,970	3,269	5,874	15,522	2,973	517	4,614	1,297	16,311
Prowers	Pueblo	Rio Blanco	Rio Grande	Routt	Saguache	San Juan	San Miguel	Sedgwick	Summit
14,572	2,739	139,619	4,306						
Teller	Washington	Weld	Yuma						