

Total Ballots Returned

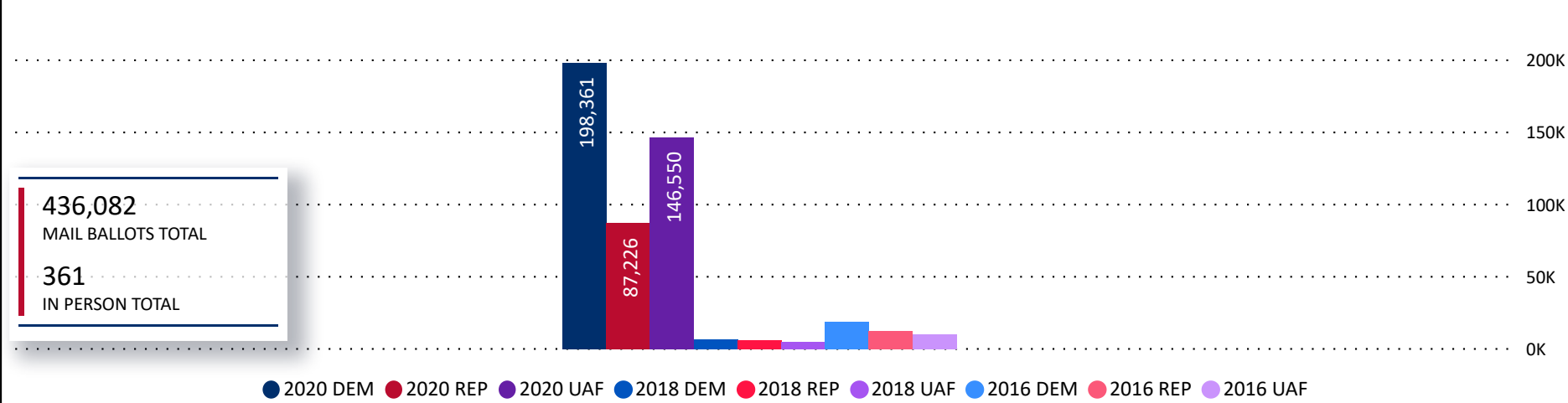
(as of October 15, 2020)

436,443

October 16, 2020

19 Days Out from Election Day

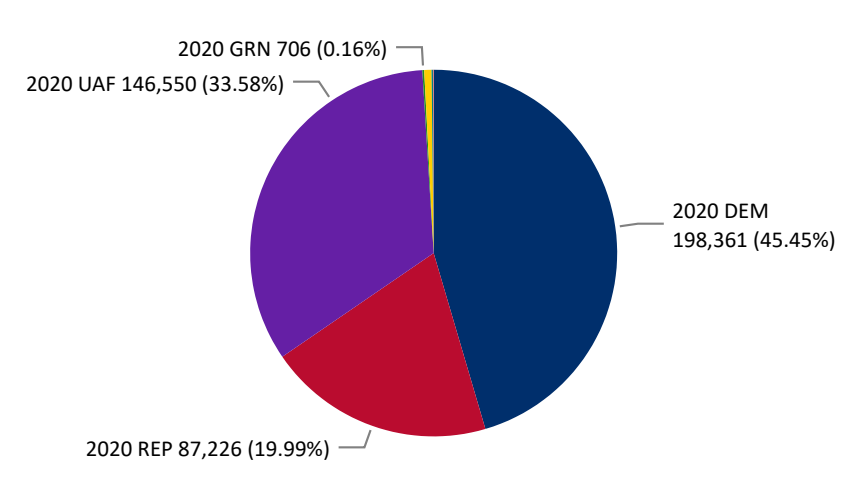
Ballots Returned 19 Days Out by Major Party Registration



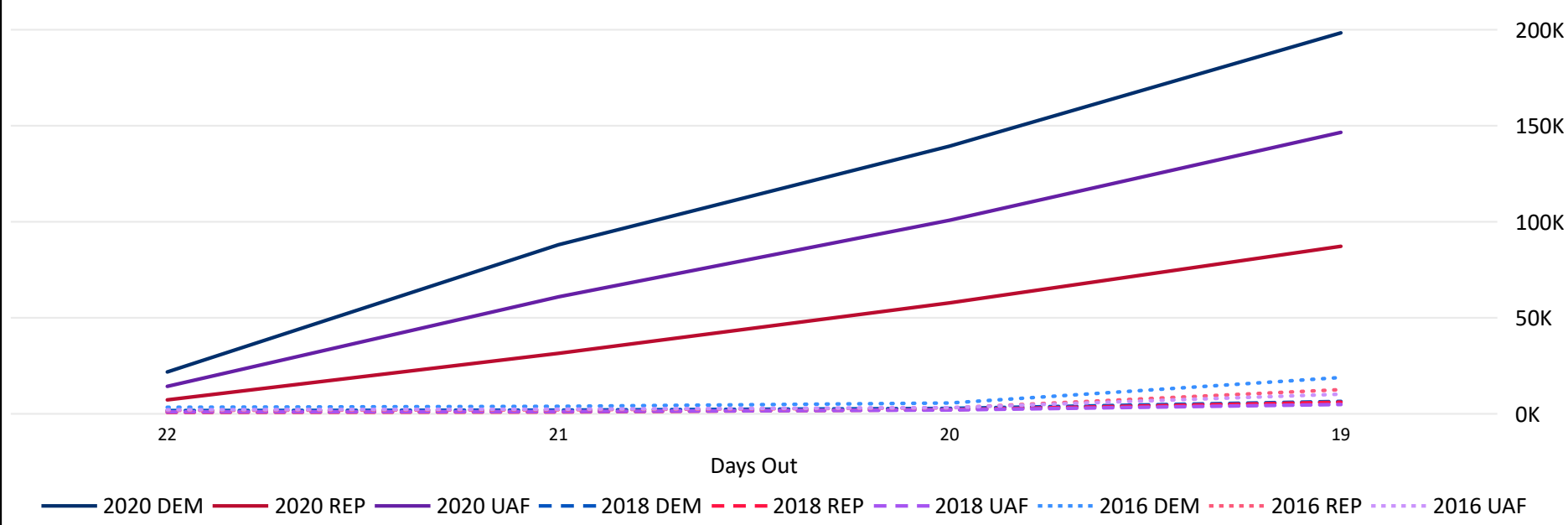
436,082
MAIL BALLOTS TOTAL

361
IN PERSON TOTAL

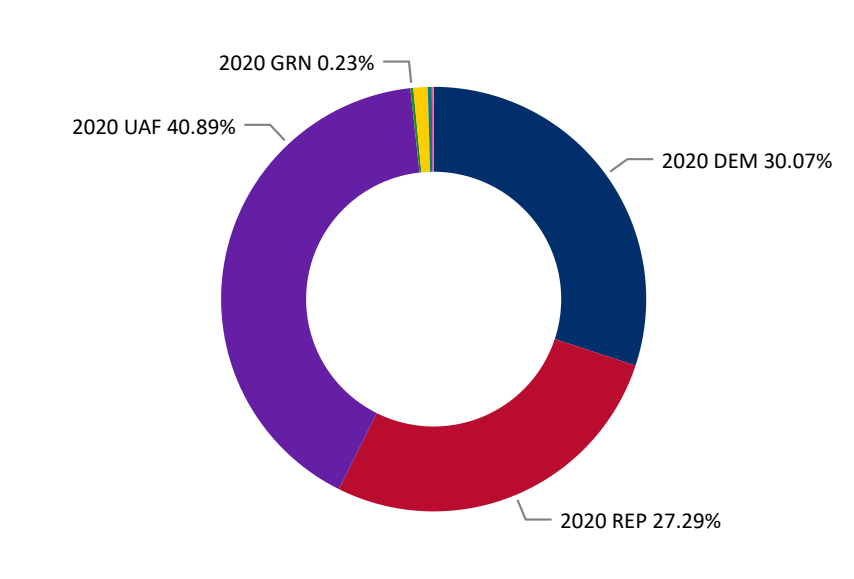
Ballots Returned by Party Registration



Trend Line of Ballots Returned by Day 2016, 2018 & 2020 by Major Party Registration



Percent of Total Active Voters by Party Registration



Total Ballots Returned

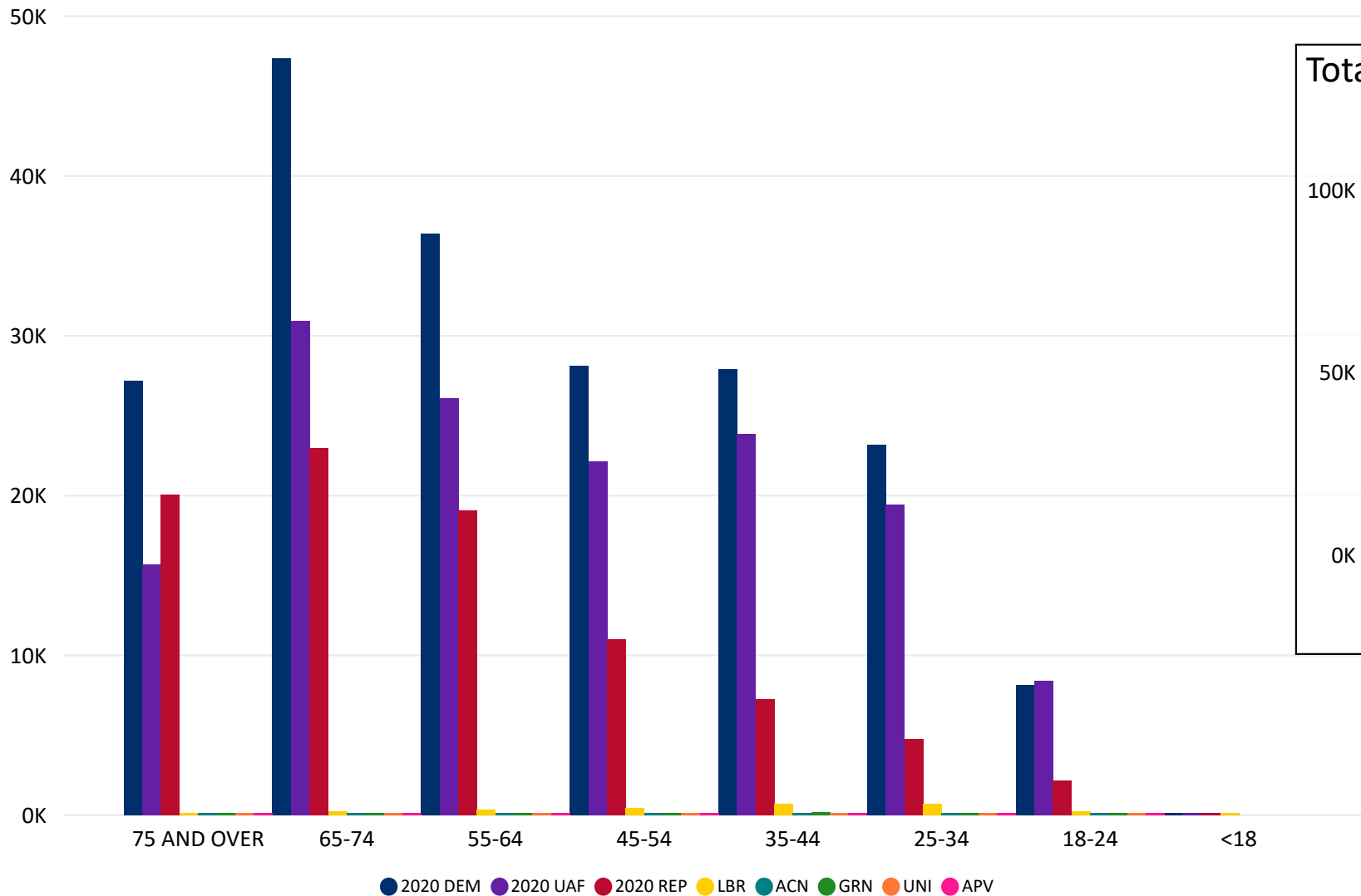
(as of October 15, 2020)

436,443

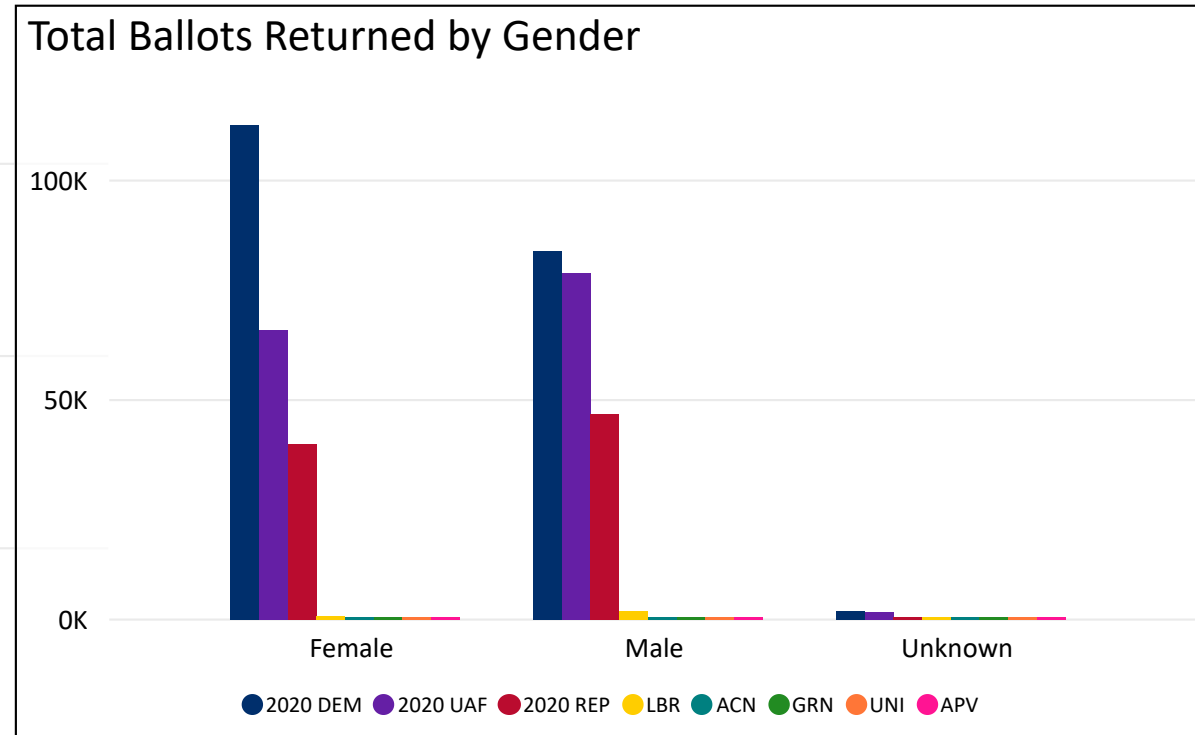
October 16, 2020

19 Days Out from Election Day

Ballot Type Returned by Age Range



Total Ballots Returned by Gender



2020 General Election Ballot Return Reporting:
 Total Ballots Breakdown by Gender and Age

Total Ballots Returned

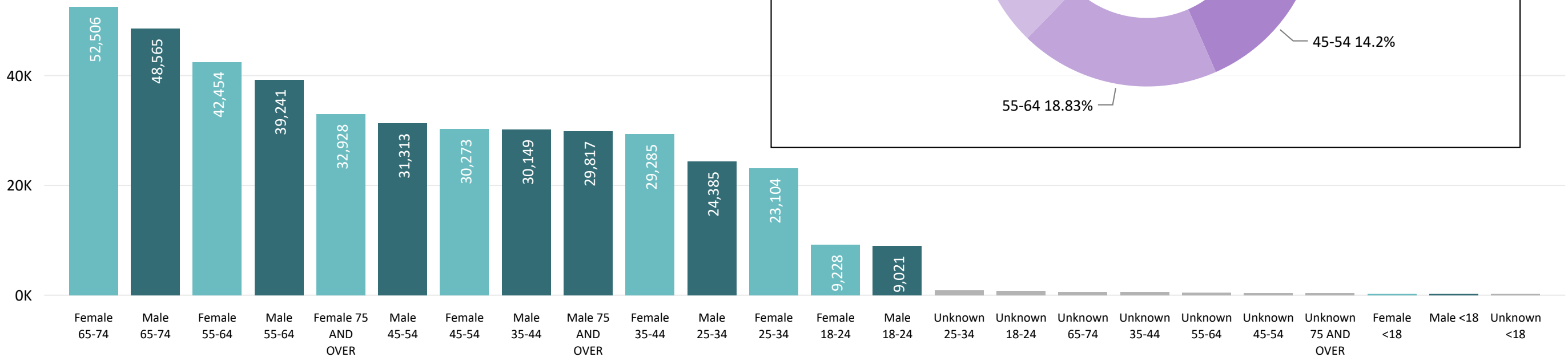
(as of October 15, 2020)

436,443

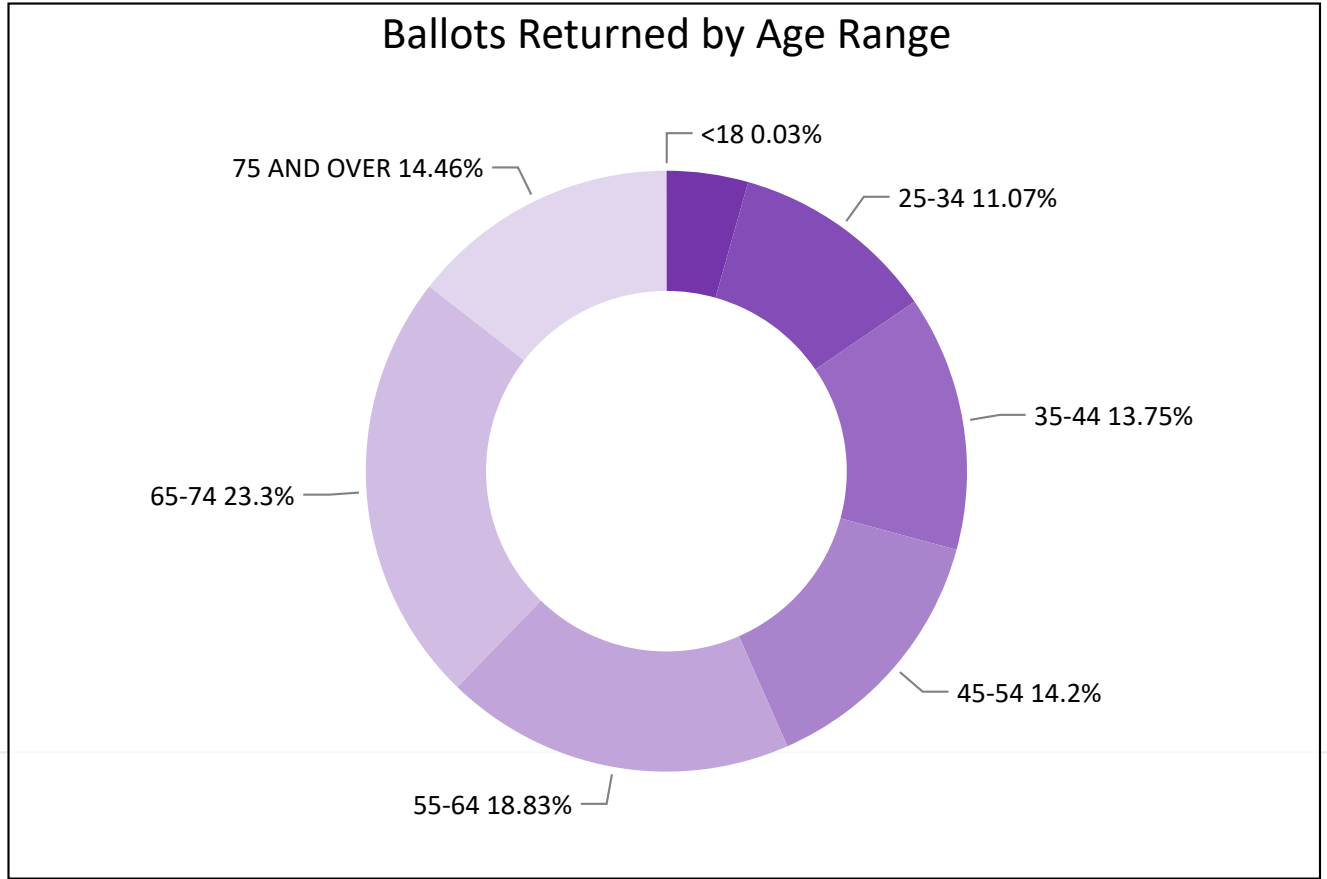
October 16, 2020

19 Days Out from Election Day

Ballots Returned by Gender/Age Range



Ballots Returned by Age Range



Total Ballots Returned

(as of October 15, 2020)

436,443

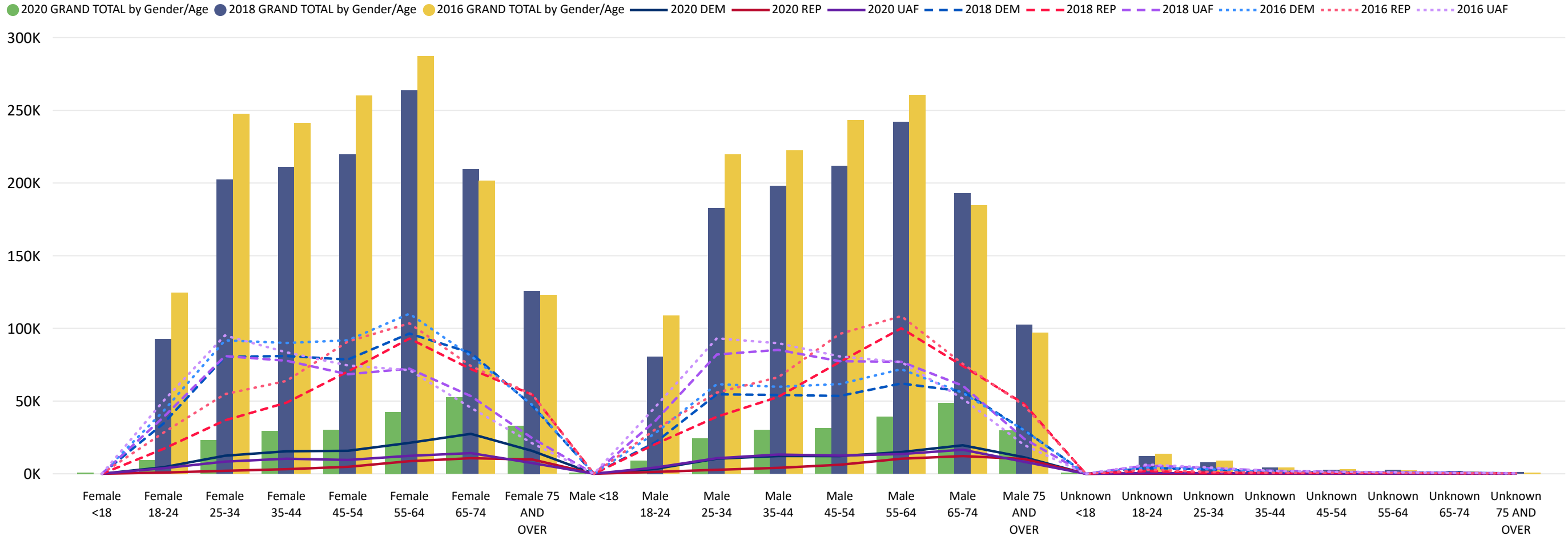
October 16, 2020

19 Days Out from Election Day

2020 General Election Ballot Return Reporting:
 Comparison of 2020, 2018, & 2016 by Gender and Age
 & Major Party

Chart reflects current totals for 2020
 and final totals from 2018 & 2016

Comparison of Ballots Returned by Gender/Age Range & Major Party 2020, 2018, & 2016



Total Ballots Returned

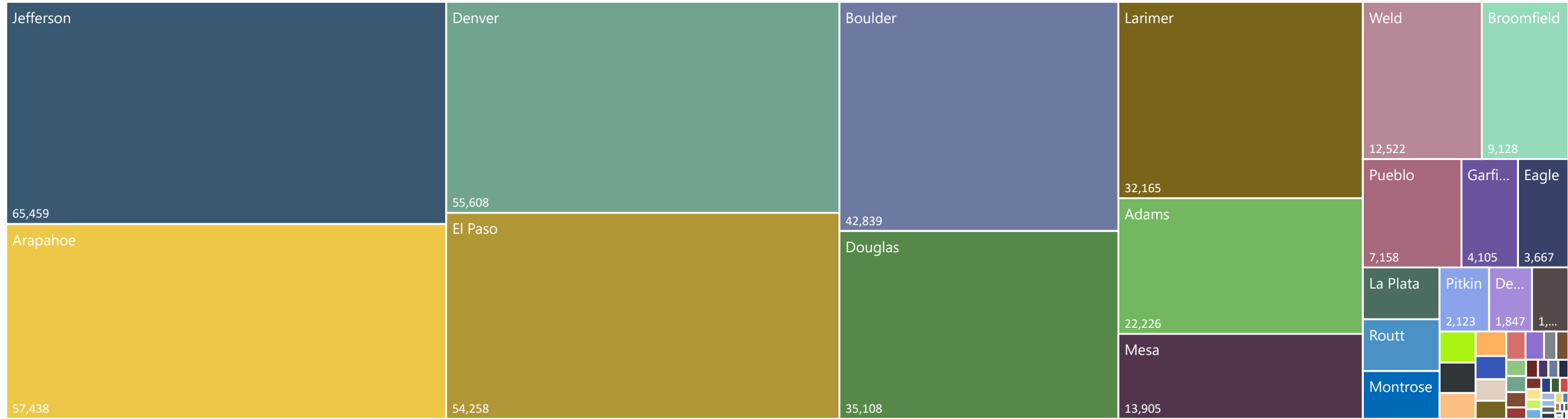
(as of October 15, 2020)

October 16, 2020

2020 General Election Ballot Return Reporting: by County

436,443

19 Days Out from Election Day



22,226	25	57,438	87	98	351	42,839	9,128	218	122
Adams	Alamosa	Arapahoe	Archuleta	Baca	Bent	Boulder	Broomfield	Chaffee	Cheyenne
50	0	367	9	60	1,847	55,608	18	35,108	3,667
Clear Creek	Conejos	Costilla	Crowley	Custer	Delta	Denver	Dolores	Douglas	Eagle
54,258	153	41	4,105	27	216	89	121	369	143
El Paso	Elbert	Fremont	Garfield	Gilpin	Grand	Gunnison	Hinsdale	Huerfano	Jackson
65,459	123	231	2,665	116	32,165	739	24	204	13,905
Jefferson	Kiowa	Kit Carson	La Plata	Lake	Larimer	Las Animas	Lincoln	Logan	Mesa
0	17	1,562	2,459	56	503	748	57	0	2,123
Mineral	Moffat	Montezuma	Montrose	Morgan	Otero	Ouray	Park	Phillips	Pitkin
12	7,158	476	441	2,652	18	0	620	98	231
Prowers	Pueblo	Rio Blanco	Rio Grande	Routt	Saguache	San Juan	San Miguel	Sedgwick	Summit
69	105	12,522	97						
Teller	Washington	Weld	Yuma						