

# Dell Precision T1700 Mini-Tower Owner's Manual

Regulatory Model: D13M  
Regulatory Type: D13M001



# Notes, Cautions, and Warnings



**NOTE:** A NOTE indicates important information that helps you make better use of your computer.



**CAUTION:** A CAUTION indicates either potential damage to hardware or loss of data and tells you how to avoid the problem.



**WARNING:** A WARNING indicates a potential for property damage, personal injury, or death.

© 2013 Dell Inc.

Trademarks used in this text: Dell™, the Dell logo, Dell Boomi™, Dell Precision™, OptiPlex™, Latitude™, PowerEdge™, PowerVault™, PowerConnect™, OpenManage™, EqualLogic™, Compellent™, KACE™, FlexAddress™, Force10™ and Vostro™ are trademarks of Dell Inc. Intel®, Pentium®, Xeon®, Core® and Celeron® are registered trademarks of Intel Corporation in the U.S. and other countries. AMD® is a registered trademark and AMD Opteron™, AMD Phenom™ and AMD Sempron™ are trademarks of Advanced Micro Devices, Inc. Microsoft®, Windows®, Windows Server®, Internet Explorer®, MS-DOS®, Windows Vista® and Active Directory® are either trademarks or registered trademarks of Microsoft Corporation in the United States and/or other countries. Red Hat® and Red Hat® Enterprise Linux® are registered trademarks of Red Hat, Inc. in the United States and/or other countries. Novell® and SUSE® are registered trademarks of Novell Inc. in the United States and other countries. Oracle® is a registered trademark of Oracle Corporation and/or its affiliates. Citrix®, Xen®, XenServer® and XenMotion® are either registered trademarks or trademarks of Citrix Systems, Inc. in the United States and/or other countries. VMware®, vMotion®, vCenter®, vCenter SRM™ and vSphere® are registered trademarks or trademarks of VMware, Inc. in the United States or other countries. IBM® is a registered trademark of International Business Machines Corporation.

2013 - 04

Rev. A00

# Contents

|   |          |
|---|----------|
| <b>1 Working on Your Computer.....</b>                      | <b>5</b> |
| Before Working Inside Your Computer.....                    | 5        |
| Turning Off Your Computer.....                              | 6        |
| After Working Inside Your Computer.....                     | 6        |
| <b>2 Removing and Installing Components.....</b>            | <b>7</b> |
| Recommended Tools.....                                      | 7        |
| Removing the Cover.....                                     | 7        |
| Installing the Cover.....                                   | 8        |
| Removing the Intrusion Switch.....                          | 8        |
| Installing the Intrusion Switch.....                        | 9        |
| Removing the Wireless Local Area Network (WLAN) Card.....   | 9        |
| Installing the Wireless Local Area Network (WLAN) Card..... | 10       |
| Removing the Front Bezel.....                               | 10       |
| Installing the Front Bezel.....                             | 10       |
| Removing the Expansion Card.....                            | 10       |
| Installing the Expansion Card.....                          | 11       |
| Memory Module Guidelines.....                               | 11       |
| Removing the Memory.....                                    | 12       |
| Installing the Memory.....                                  | 12       |
| Removing the Coin-Cell Battery.....                         | 12       |
| Installing the Coin-Cell Battery.....                       | 13       |
| Removing the Hard Drive.....                                | 13       |
| Installing the Hard Drive.....                              | 14       |
| Removing the Optical Drive.....                             | 14       |
| Installing the Optical Drive.....                           | 15       |
| Removing the Speaker.....                                   | 16       |
| Installing the Speaker.....                                 | 16       |
| Removing the Power Supply.....                              | 16       |
| Installing the Power Supply.....                            | 18       |
| Removing the Heat Sink Assembly.....                        | 18       |
| Installing the Heat Sink Assembly.....                      | 18       |
| Removing the Processor.....                                 | 18       |
| Installing the Processor.....                               | 19       |
| Removing the System Fan.....                                | 19       |
| Installing the System Fan.....                              | 20       |
| Removing the Thermal Sensor.....                            | 20       |
| Installing the Thermal Sensor.....                          | 22       |


|  |           |
|--|-----------|
| Removing the Power Switch.....                                     | 22        |
| Installing the Power Switch.....                                   | 23        |
| Removing the Input/Output (I/O) Panel.....                         | 24        |
| Installing the Input/Output (I/O) Panel.....                       | 25        |
| Removing the System Board.....                                     | 25        |
| System Board Components.....                                       | 26        |
| Installing the System Board.....                                   | 27        |
| <b>3 Using The System Setup Program And Boot Manager.....</b>      | <b>29</b> |
| Boot Sequence.....   | 29        |
| Navigation Keys.....   | 29        |
| System Setup Options.....  | 30        |
| Updating the BIOS .....  | 38        |
| Jumper Settings.....   | 39        |
| System and Setup Password.....                                     | 39        |
| Assigning a System Password and Setup Password.....                | 39        |
| Deleting or Changing an Existing System and/or Setup Password..... | 40        |
| Disabling a System Password.....                                   | 40        |
| Diagnostics.....   | 41        |
| Enhanced Pre-Boot System Assessment (ePSA) Diagnostics.....        | 41        |
| Troubleshooting Your Computer.....                                 | 42        |
| Power LED Diagnostics.....   | 42        |
| Beep Code.....   | 43        |
| Error Messages.....  | 43        |
| <b>4 Specifications.....</b>                                       | <b>47</b> |
| <b>5 Contacting Dell.....</b>                                      | <b>53</b> |


# Working on Your Computer

## Before Working Inside Your Computer


Use the following safety guidelines to help protect your computer from potential damage and to help to ensure your personal safety. Unless otherwise noted, each procedure included in this document assumes that the following conditions exist:


- You have read the safety information that shipped with your computer.
- A component can be replaced or--if purchased separately--installed by performing the removal procedure in reverse order.


 **WARNING:** Before working inside your computer, read the safety information that shipped with your computer. For additional safety best practices information, see the Regulatory Compliance Homepage at [www.dell.com/regulatory\\_compliance](http://www.dell.com/regulatory_compliance)

 **CAUTION:** Many repairs may only be done by a certified service technician. You should only perform troubleshooting and simple repairs as authorized in your product documentation, or as directed by the online or telephone service and support team. Damage due to servicing that is not authorized by Dell is not covered by your warranty. Read and follow the safety instructions that came with the product.

 **CAUTION:** To avoid electrostatic discharge, ground yourself by using a wrist grounding strap or by periodically touching an unpainted metal surface, such as a connector on the back of the computer.

 **CAUTION:** Handle components and cards with care. Do not touch the components or contacts on a card. Hold a card by its edges or by its metal mounting bracket. Hold a component such as a processor by its edges, not by its pins.

 **CAUTION:** When you disconnect a cable, pull on its connector or on its pull-tab, not on the cable itself. Some cables have connectors with locking tabs; if you are disconnecting this type of cable, press in on the locking tabs before you disconnect the cable. As you pull connectors apart, keep them evenly aligned to avoid bending any connector pins. Also, before you connect a cable, ensure that both connectors are correctly oriented and aligned.

 **NOTE:** The color of your computer and certain components may appear differently than shown in this document.

To avoid damaging your computer, perform the following steps before you begin working inside the computer.

1. Ensure that your work surface is flat and clean to prevent the computer cover from being scratched.
2. Turn off your computer (see Turning Off Your Computer).

 **CAUTION:** To disconnect a network cable, first unplug the cable from your computer and then unplug the cable from the network device.

3. Disconnect all network cables from the computer.
4. Disconnect your computer and all attached devices from their electrical outlets.
5. Press and hold the power button while the computer is unplugged to ground the system board.
6. Remove the cover.

**⚠ CAUTION:** Before touching anything inside your computer, ground yourself by touching an unpainted metal surface, such as the metal at the back of the computer. While you work, periodically touch an unpainted metal surface to dissipate static electricity, which could harm internal components.

## Turning Off Your Computer


**⚠ CAUTION:** To avoid losing data, save and close all open files and exit all open programs before you turn off your computer.

1. Shut down the operating system:

– In Windows 8:


\* Using a touch-enabled device:

a. Swipe in from the right edge of the screen, opening the Charms menu and select **Settings**.

b. Select the  and then select **Shut down**

\* Using a mouse:

a. Point to upper-right corner of the screen and click **Settings**.

b. Click the  and select **Shut down**.

– In Windows 7:

1. Click **Start** .

2. Click **Shut Down**.

or

1. Click **Start** .

2. Click the arrow in the lower-right corner of the **Start** menu as shown below, and then click **Shut**



**Down..**

2. Ensure that the computer and all attached devices are turned off. If your computer and attached devices did not automatically turn off when you shut down your operating system, press and hold the power button for about 6 seconds to turn them off.

## After Working Inside Your Computer

After you complete any replacement procedure, ensure you connect any external devices, cards, and cables before turning on your computer.

1. Replace the cover.

**⚠ CAUTION:** To connect a network cable, first plug the cable into the network device and then plug it into the computer.

2. Connect any telephone or network cables to your computer.

3. Connect your computer and all attached devices to their electrical outlets.

4. Turn on your computer.

5. If required, verify that the computer works correctly by running the Dell Diagnostics.

# Removing and Installing Components

This section provides detailed information on how to remove or install the components from your computer.

## Recommended Tools

The procedures in this document may require the following tools:

- Small flat-blade screwdriver
- Phillips screwdriver
- Small plastic scribe

## Removing the Cover

1. Follow the procedures in *Before Working Inside Your Computer*.
2. Pull up the cover release latch to release the cover from the computer.



3. Lift the cover upwards to remove it from the computer.

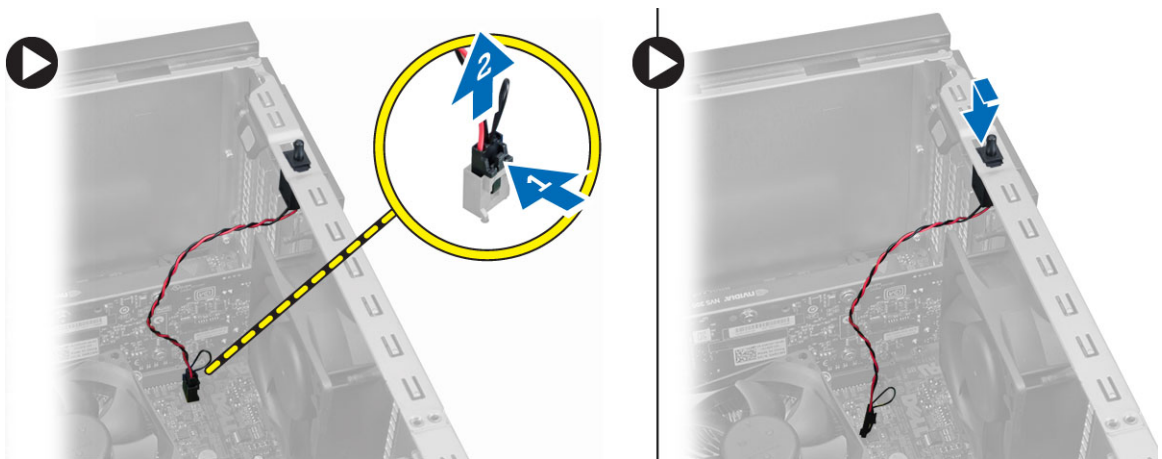


## Installing the Cover

1. Align the cover along its tabs on the chassis of the computer.
2. Press down on the cover till it clicks into place.
3. Follow the procedures in *After Working Inside Your Computer*.

## Removing the Intrusion Switch

1. Follow the procedures in *Before Working Inside Your Computer*.
2. Remove the cover.
3. Disconnect the intrusion-switch cable from the system board.
4. Slide the intrusion switch toward the bottom of the chassis and remove it from the computer.



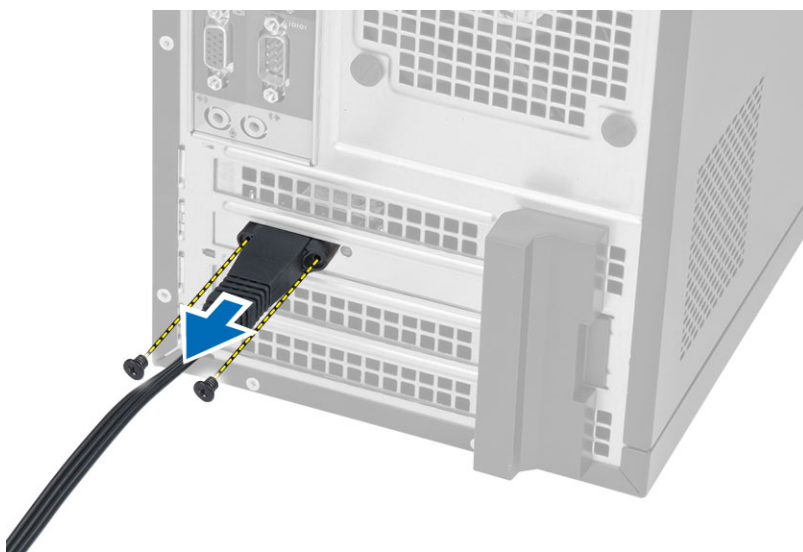


## Installing the Intrusion Switch

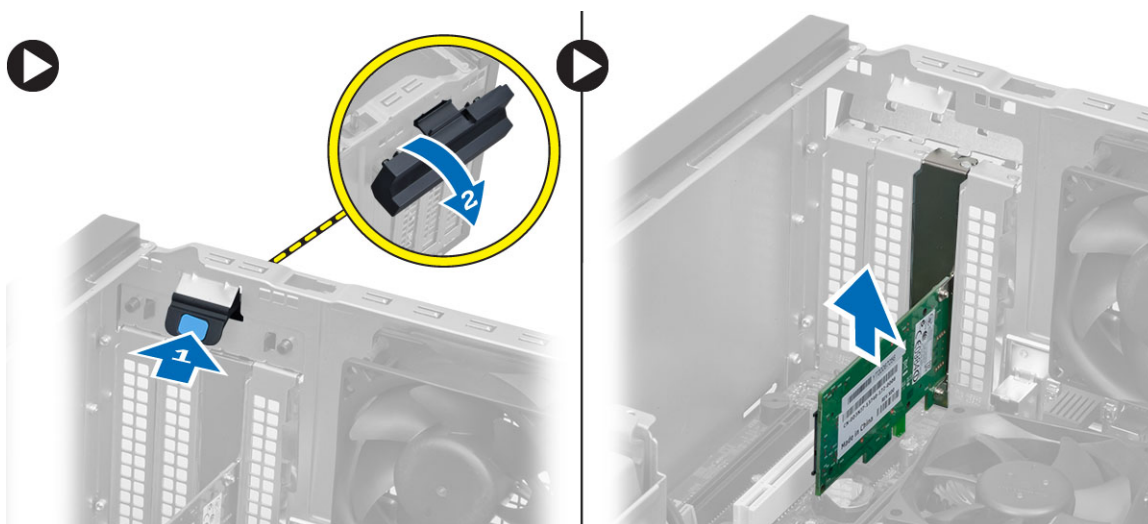
1. Insert the intrusion switch into its place in the chassis rear and slide it towards the top to secure it.
2. Connect the intrusion cable to the system board.
3. Install the cover.
4. Follow the procedures in *After Working Inside Your Computer*.

## Removing the Wireless Local Area Network (WLAN) Card

1. Follow the procedures in *Before Working Inside Your Computer*.
2. Remove the cover.
3. Remove the screws that secure the antenna to the computer.
4. Disconnect the antenna from the computer.



5. Press the blue tab and lift the latch outwards and remove the WLAN card from the connector on the system board.

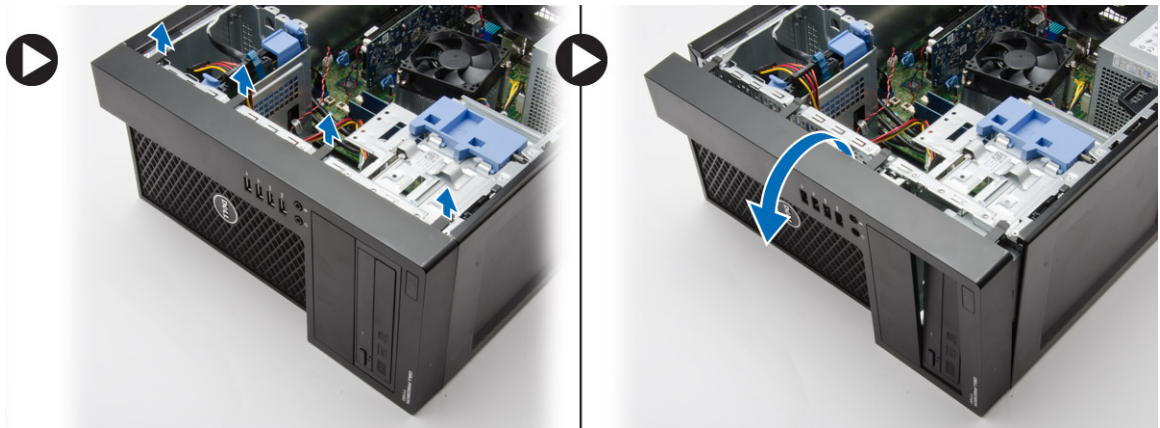


## Installing the Wireless Local Area Network (WLAN) Card

1. Insert the WLAN card into the connector on the system board and press down until it is secured.
2. Affix the latch.
3. Place the antenna puck on the connector and tighten the screws to secure it to the computer.
4. Install the cover.
5. Follow the procedures in *After Working Inside Your Computer*.

## Removing the Front Bezel

1. Follow the procedures in *Before Working Inside Your Computer*.
2. Remove the cover.
3. Pry the front bezel retention clips away from the chassis located at the edge of front bezel. Rotate the front bezel away from the computer to release the hooks on the opposite side of the bezel from the chassis.

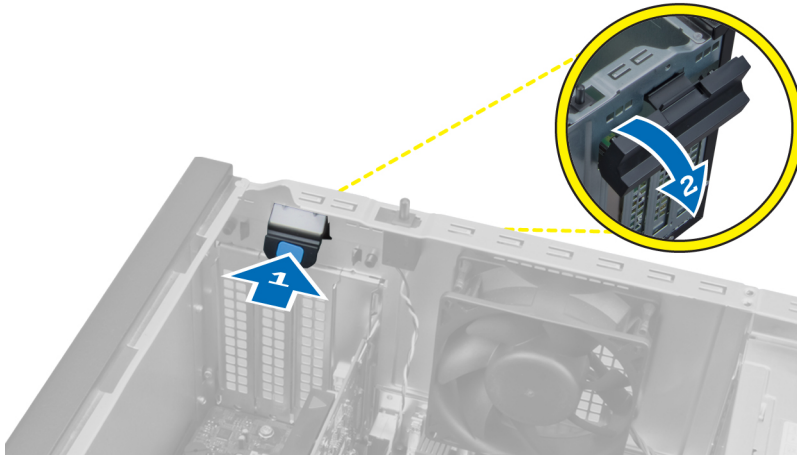


## Installing the Front Bezel

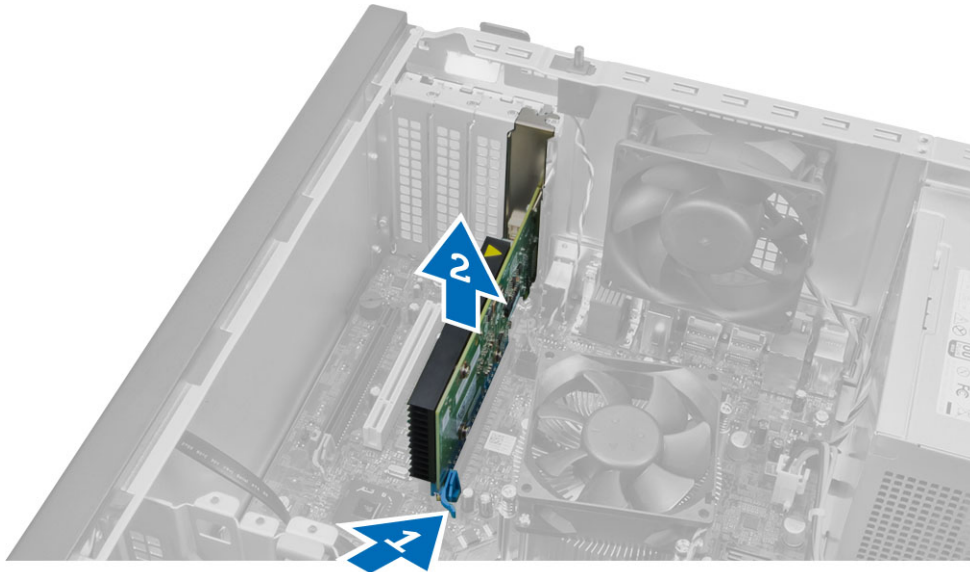
1. Insert the hooks along the bottom edge of the front bezel into the slots on the chassis front.
2. Rotate the bezel toward the computer to engage the front-bezel retention clips until they click into place.
3. Install the cover.
4. Follow the procedures in *After Working Inside Your Computer*.

## Removing the Expansion Card

1. Follow the procedures in *Before Working Inside Your Computer*.
2. Remove the cover.
3. Press the tab to release the latch.



4. Pull the release lever away from the PCI x16 card until you release the securing tab from the dent in the card. Lift the card out of its connector and remove it from the system board.




## Installing the Expansion Card

1. Insert the expansion card in the connector on the system board and press down until secured.
2. Push the retention latch back to its position.
3. Install the cover.
4. Follow the procedures in *After Working Inside Your Computer*.

## Memory Module Guidelines

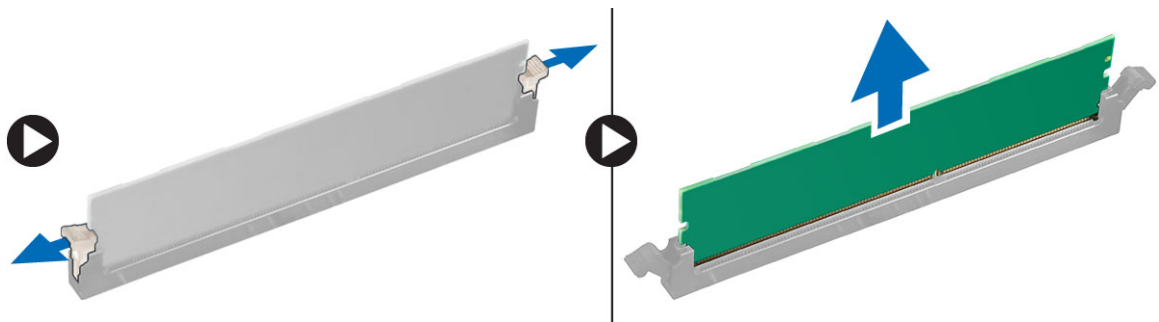
To ensure optimal performance of your computer, observe the following general guidelines when configuring your system memory:

- Memory modules of different sizes can be mixed (for example, 2 GB and 4 GB). But, all populated channels must have identical configurations.

- Memory modules must be installed beginning with the first socket.
-  **NOTE:** The memory sockets in your computer may be labeled differently depending on the hardware configuration. For example, A1, A2 or 1,2,3.
- If the quad-rank memory modules are mixed with single or dual-rank modules, the quad-rank modules must be installed in the sockets with the white release levers.
- If memory modules with different speeds are installed, they operate at the speed of the slowest installed memory modules.

## Removing the Memory

1. Follow the procedures in *Before Working Inside Your Computer*.
2. Remove the cover.
3. Press down on the memory retaining tabs on each side of the memory modules, and lift the memory modules out of the connectors on the system board.



## Installing the Memory

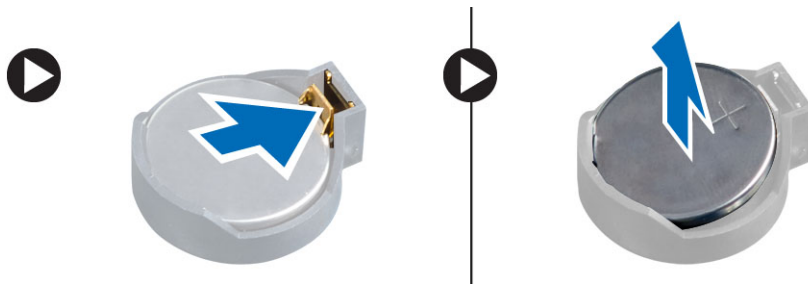
1. Align the notch on the memory-card with the tab in the system-board connector.
2. Press down on the memory module until the release tabs spring back to secure them in place.
3. Install the cover.
4. Follow the procedures in *After Working Inside Your Computer*.

## Removing the Coin-Cell Battery

1. Follow the procedures in *Before Working Inside Your Computer*.
2. Remove:
  - a) cover
  - b) expansion card(s)
3. Locate the coin-cell battery on the system board.



4. Press the release latch away from the battery to allow the battery to pop-up from the socket and lift the coin-cell battery out of the computer.

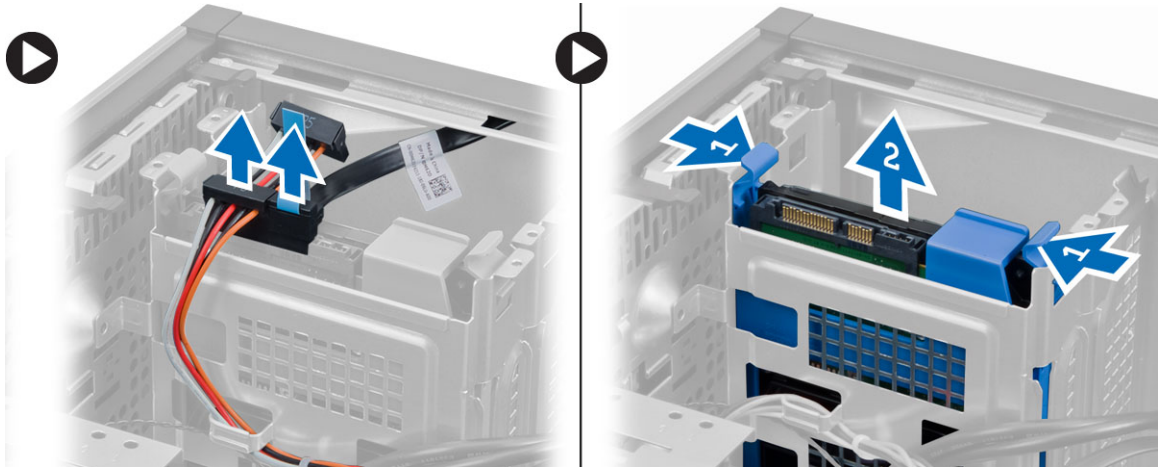


## Installing the Coin-Cell Battery

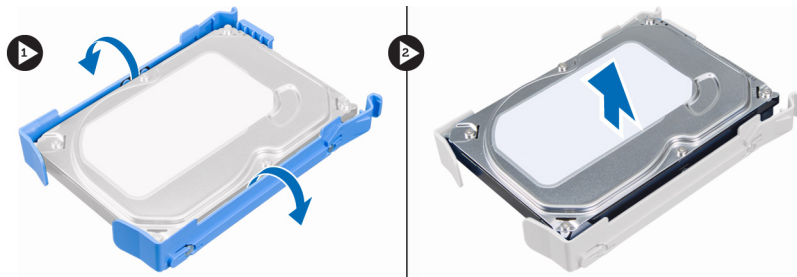
1. Place the coin cell battery in its slot on the system board and press until the release latch springs back into place and secures it.
2. Install the expansion card.
3. Install the cover.
4. Follow the procedures in *After Working Inside Your Computer*.

## Removing the Hard Drive

1. Follow the procedures in *Before Working Inside Your Computer*.
2. Remove:
  - a) cover
  - b) front bezel
3. Disconnect the data cable and the power cable from the back of the hard drive. Press the blue securing-bracket tabs inwards and lift the hard-drive bracket out of the hard-drive bay.



4. Flex the hard-drive bracket and remove the hard drive from the hard-drive bracket.

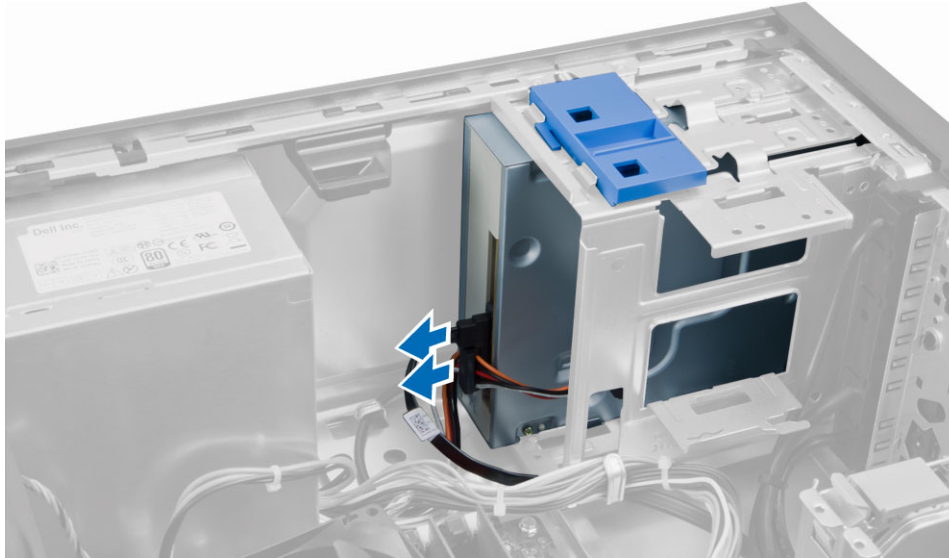


## Installing the Hard Drive

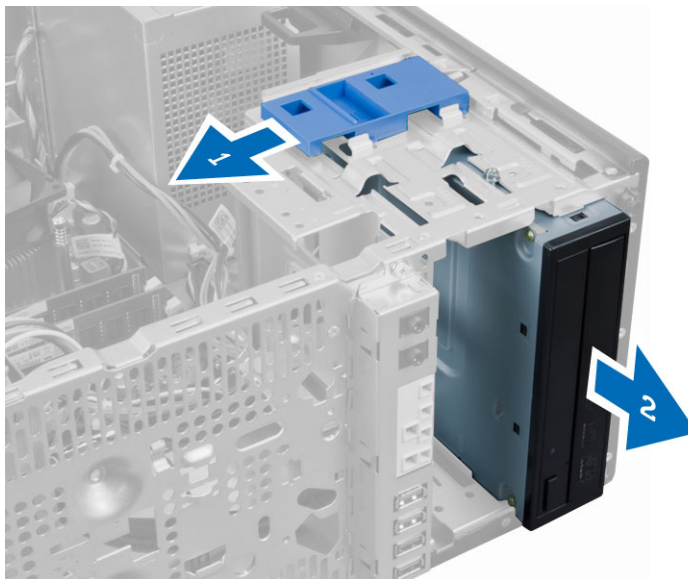
1. Insert the hard drive into the hard-drive bracket.
2. Press the securing brackets inward and slide the hard-drive bracket into the bay.
3. Connect the data cable and the power cable to the back of the hard-drive.
4. Install the:
  - a) front bezel
  - b) cover
5. Follow the procedures in *After Working Inside Your Computer*.

## Removing the Optical Drive

1. Follow the procedures in *Before Working Inside Your Computer*.
2. Remove:
  - a) cover
  - b) front bezel
3. Disconnect the data cable and the power cable from the back of the optical drive.



4. Slide and hold the optical-drive latch to unlock the optical drive and pull the optical drive out of the computer.



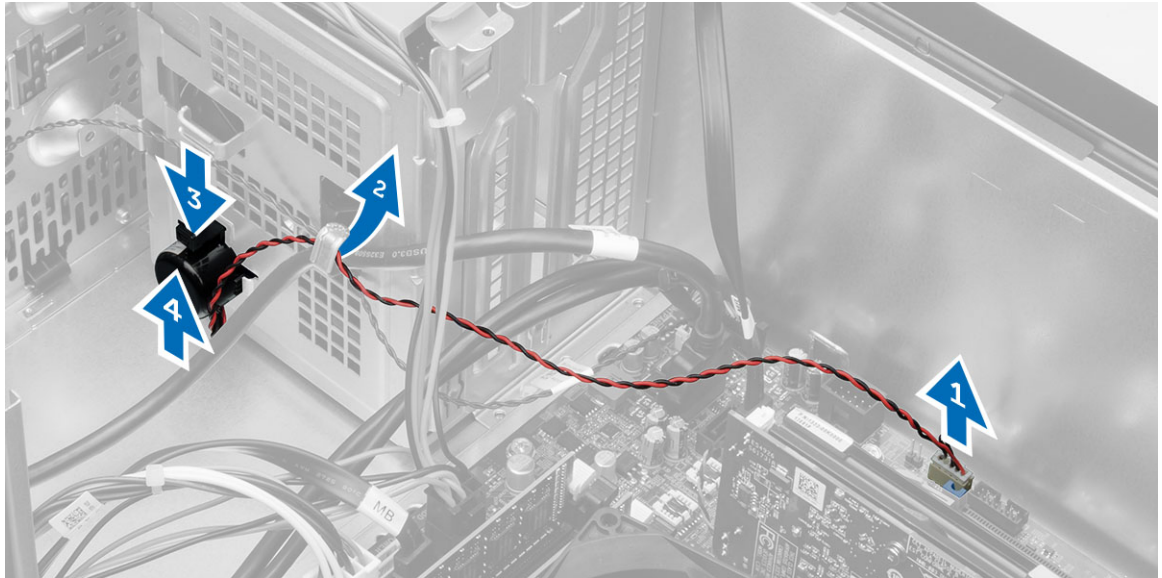
5. Repeat steps 3 and 4 to remove the second optical drive (if available).

## Installing the Optical Drive

1. Push the optical drive from the front toward the back of the computer till it is secured by the optical-drive latch.
2. Connect the data cable and power cable to the back of the optical drive.
3. Install:
  - a) front bezel
  - b) cover
4. Follow the procedures in *After Working Inside Your Computer*.

## Removing the Speaker

1. Follow the procedures in *Before Working Inside Your Computer*.
2. Remove the cover.
3. Disconnect and release the speaker cable from system board. Press down the speaker-securing tab and slide the speaker upwards to remove.



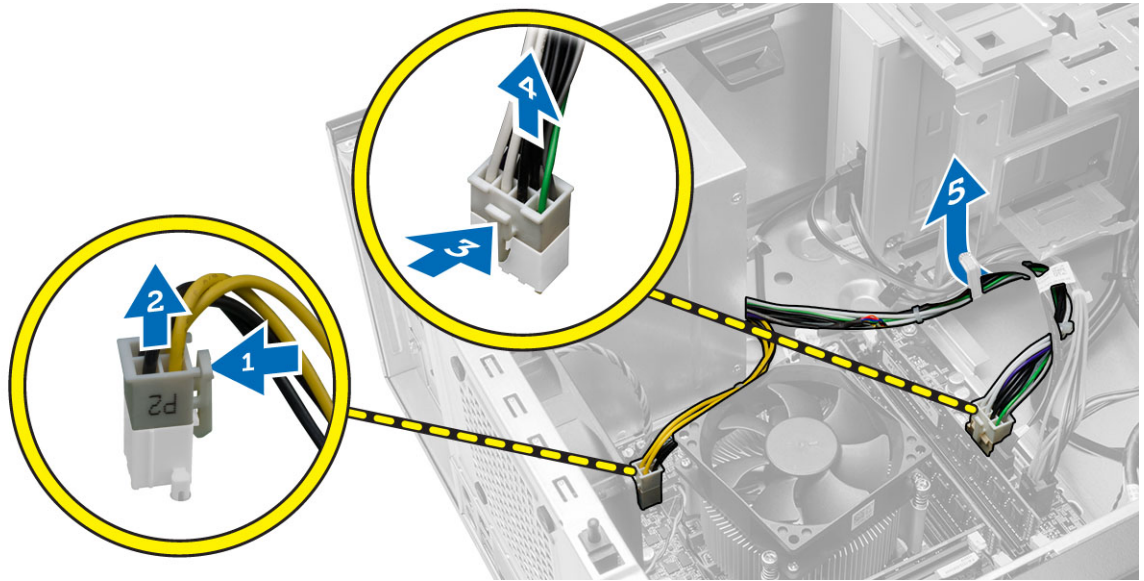
## Installing the Speaker

1. Slide the speaker downwards into its slot to secure it.
2. Thread the speaker cable into the chassis clip and connect the speaker cable to the system board.
3. Install the cover.
4. Follow the procedures in *After Working Inside Your Computer*.

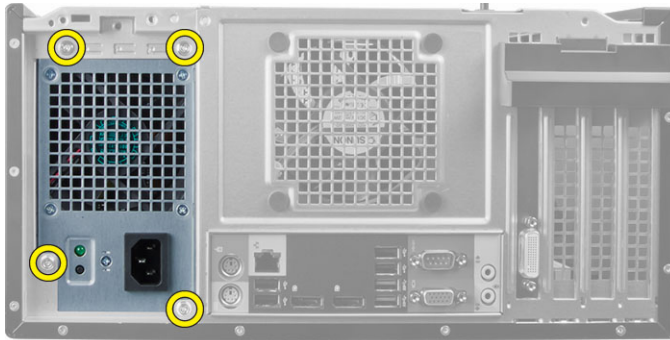
## Removing the Power Supply

1. Follow the procedures in *Before Working Inside Your Computer*.
2. Remove the cover.
3. Disconnect the 4-pin and 8-in power cables from the system board and release the cable from the tab.





4. Remove the screws that secure the power supply to the back of the computer.



5. Push in on the blue release tab beside the power supply, and slide the power supply towards the front of the computer. Lift and remove the power supply out of the computer.

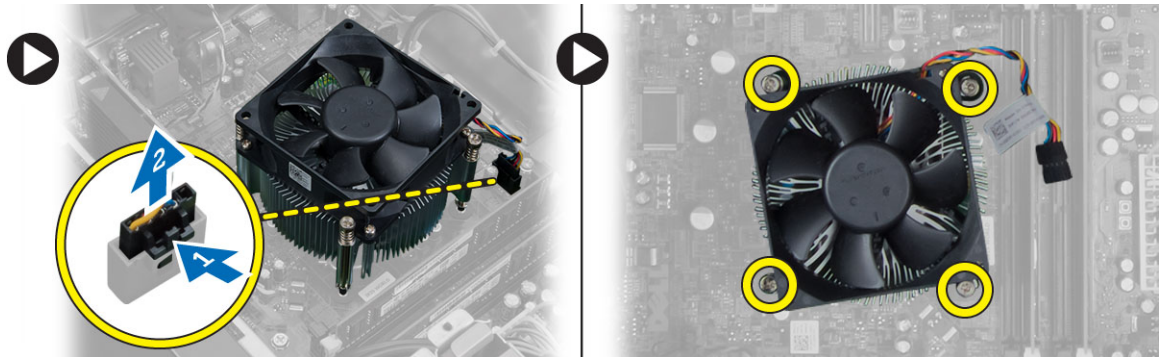


## Installing the Power Supply

1. Place the power supply in the chassis and slide towards the back of the system to secure it.
2. Tighten the screws to secure the power supply to the back of the computer.
3. Connect the 4-pin and 8-pin power cables to the system board.
4. Thread the power cables through the chassis clips.
5. Install the cover.
6. Follow the procedures in *After Working Inside Your Computer*.

## Removing the Heat Sink Assembly

1. Follow the procedures in *Before Working Inside Your Computer*.
2. Remove the cover.
3. Disconnect the fan cable from the system board. Loosen the captive screws in diagonal order and lift the heat-sink assembly away from the computer.



## Installing the Heat Sink Assembly

1. Place the heat sink assembly into the chassis.
2. Tighten the captive screws in diagonal order to secure the heat sink assembly to the computer.
3. Connect the fan cable to the system board.
4. Install the cover.
5. Follow the procedures in *After Working Inside Your Computer*.

## Removing the Processor

1. Follow the procedures in *Before Working Inside Your Computer*.
2. Remove:
  - a) cover
  - b) heat-sink assembly
3. Press the release lever down and then move it outward to release it from the retention hook. Lift the processor cover and remove the processor from the socket. Place it in an antistatic bag.

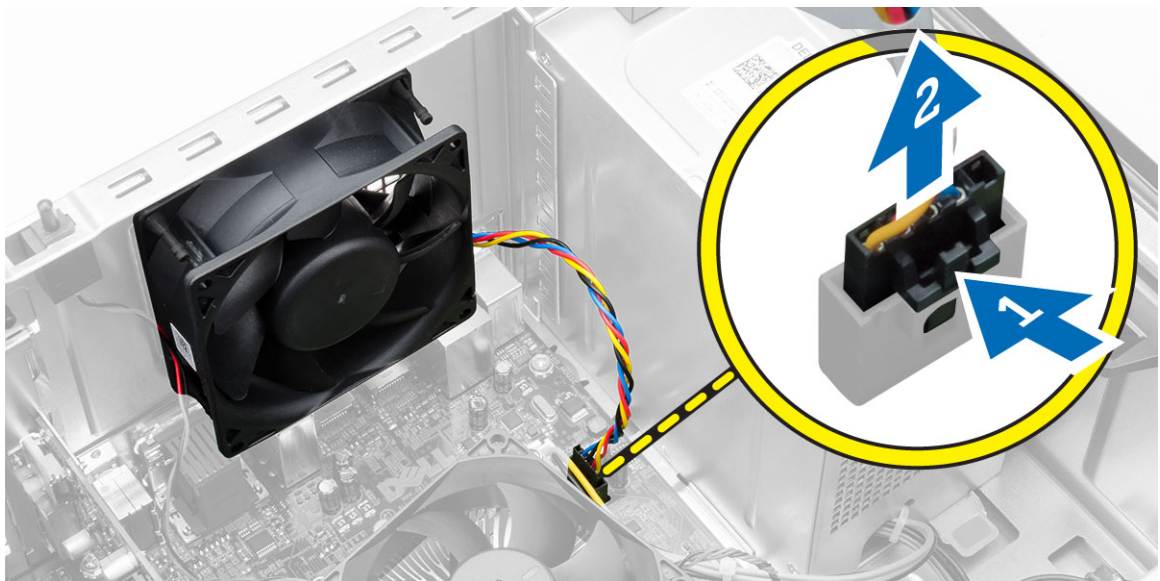


## Installing the Processor

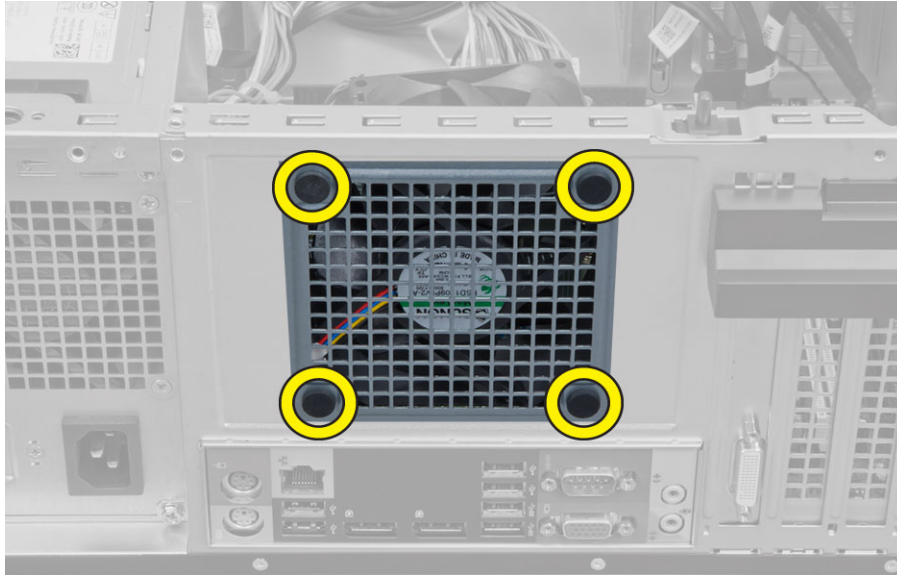
1. Insert the processor in the processor socket. Ensure the processor is properly seated.
2. Lower the processor cover.
3. Press the release lever down and then move it inward to secure it with the retention hook.
4. Install:
  - a) heat-sink assembly
  - b) cover
5. Follow the procedures in *After Working Inside Your Computer*.

## Removing the System Fan

1. Follow the procedures in *Before Working Inside Your Computer*.
2. Remove the cover.
3. Press the clip to release and disconnect the system-fan cable from the system board.



4. Pry and remove the system fan away from the four grommets securing it to the back of the computer.

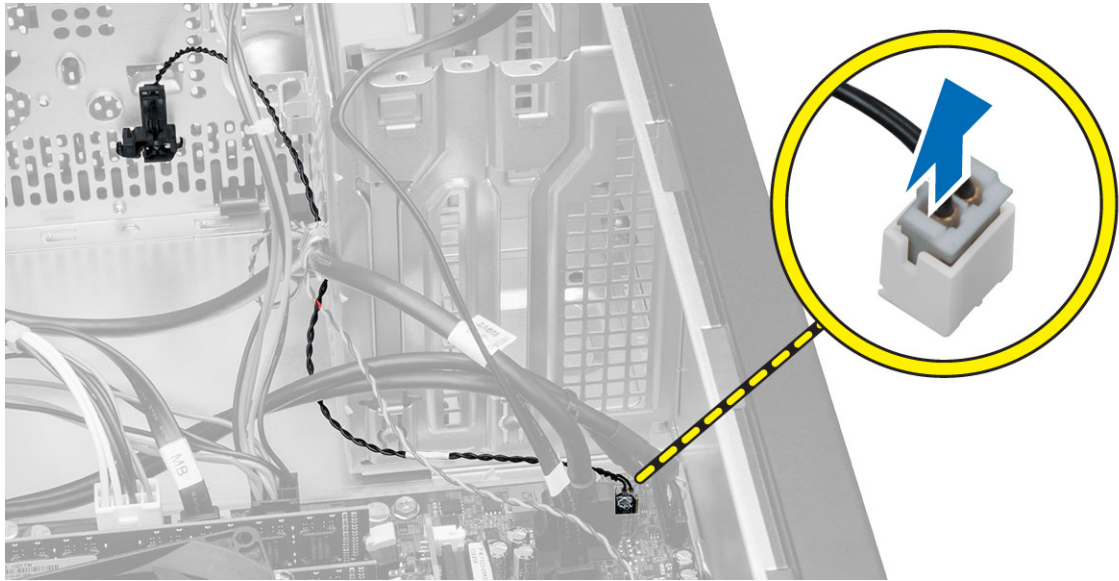


## Installing the System Fan

1. Place the system fan in the chassis.
2. Pass the four grommets through the chassis and slide outward along the groove to secure in place.
3. Connect the system-fan cable to the system board.
4. Install the cover.
5. Follow the procedures in *After Working Inside Your Computer*.

## Removing the Thermal Sensor

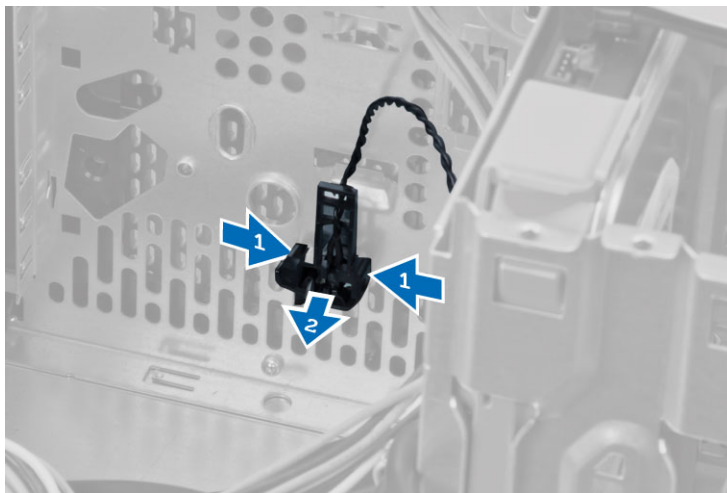
1. Follow the procedures in *Before Working Inside Your Computer*.
2. Remove the cover.
3. Disconnect the thermal-sensor cable from the system board.



4. Release the thermal-sensor cable from the chassis clip.



5. Press the tabs on both sides to release and remove the thermal sensor away from the chassis.

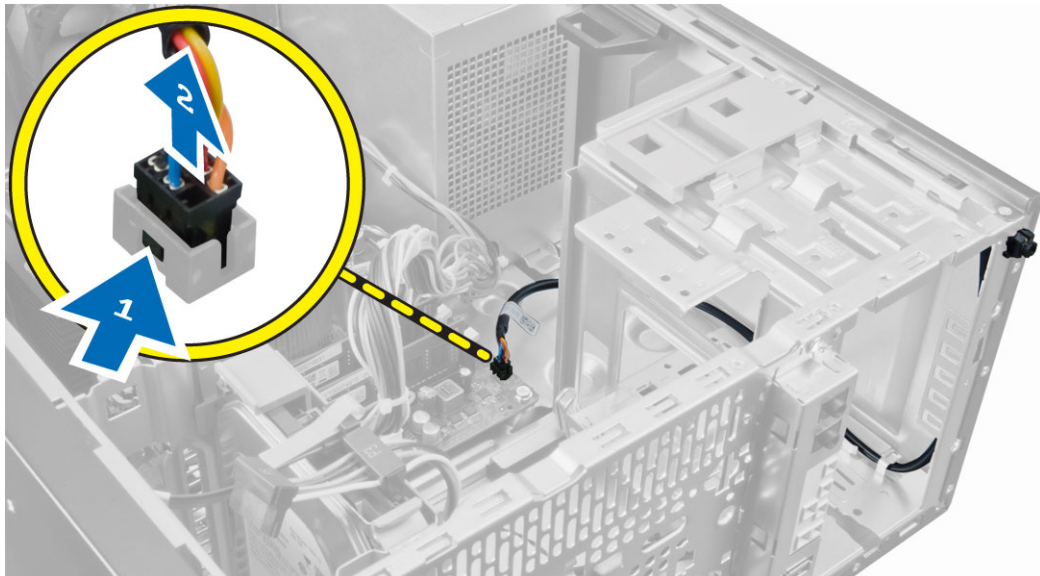


## Installing the Thermal Sensor

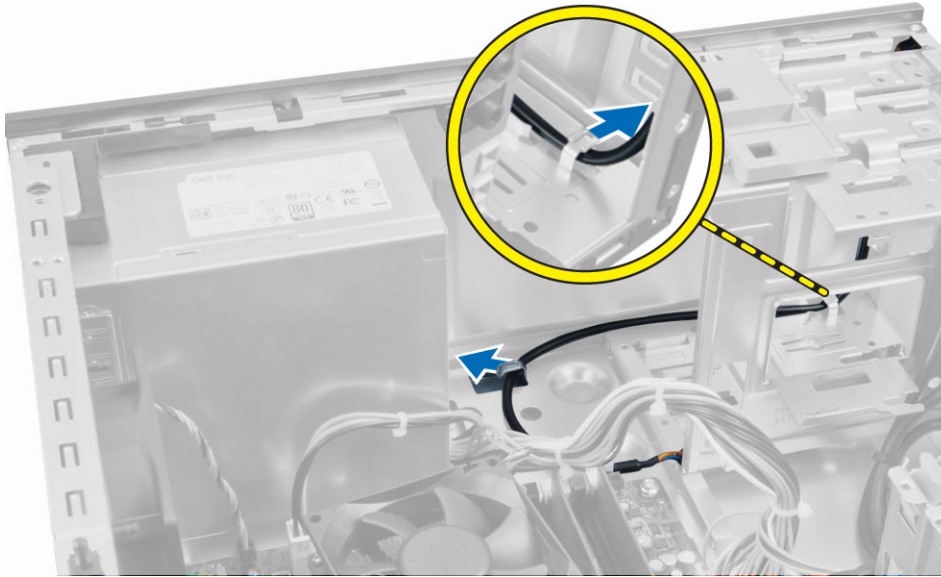
1. Secure the thermal sensor to the chassis.
2. Thread the thermal-sensor cable into the chassis clips.
3. Connect the thermal-sensor cable to the system board.
4. Install the cover.
5. Follow the procedures in *After Working Inside Your Computer*.

## Removing the Power Switch

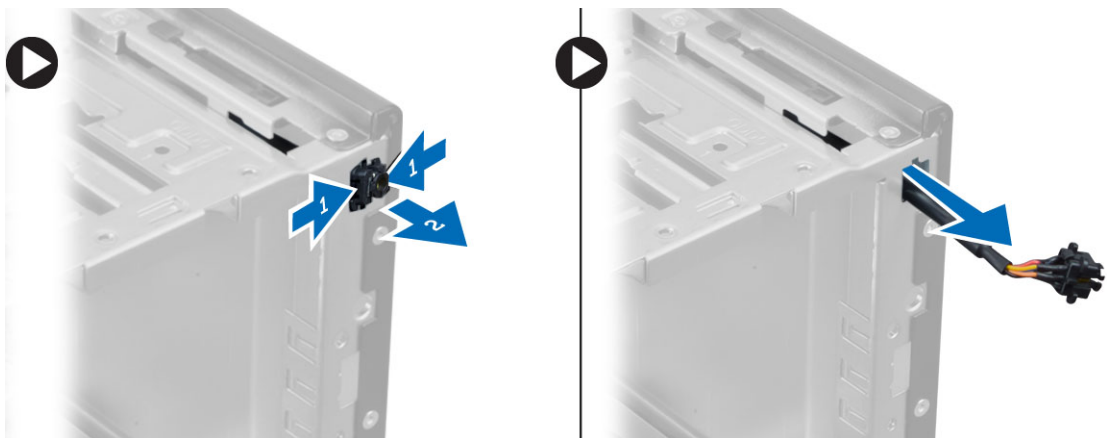
1. Follow the procedures in *Before Working Inside Your Computer*.
2. Remove the:
  - a) cover
  - b) front bezel
  - c) optical drive
3. Disconnect the power-switch cable from the system board.



4. Release the power-switch cable from the chassis clips.



5. Press the clips on both side of the power switch to release it from the chassis and, slide to remove the power switch along its cable from the computer.

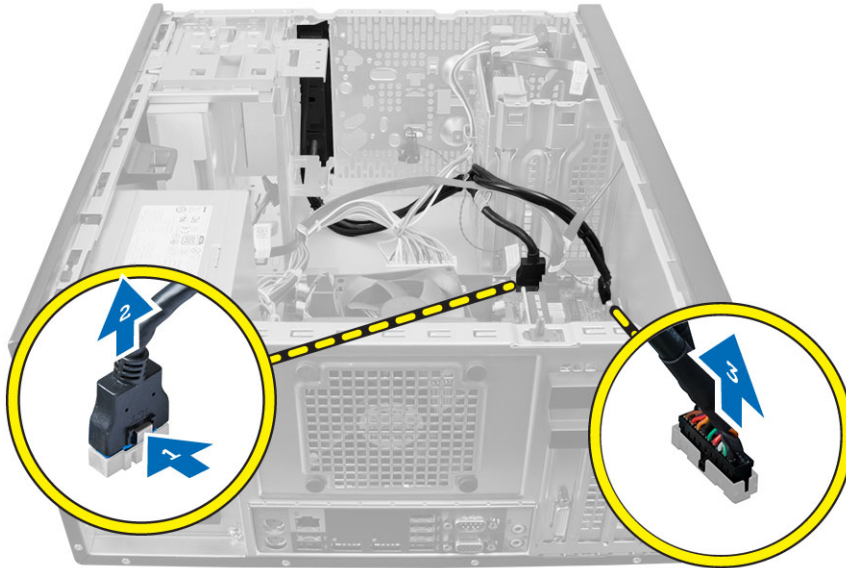


## Installing the Power Switch

1. Slide the power switch in through the front of the computer.
2. Secure the power-switch cable to the chassis.
3. Thread the power-switch cable into the chassis clips.
4. Connect the power-switch cable to the system board.
5. Install the:
  - a) optical drive
  - b) front bezel
  - c) cover
6. Follow the procedures in *After Working Inside Your Computer*.

## Removing the Input/Output (I/O) Panel

1. Follow the procedures in *Before Working Inside Your Computer*.
2. Remove:
  - a) cover
  - b) front bezel
3. Disconnect the I/O panel, data, and USB data cables from the system board.

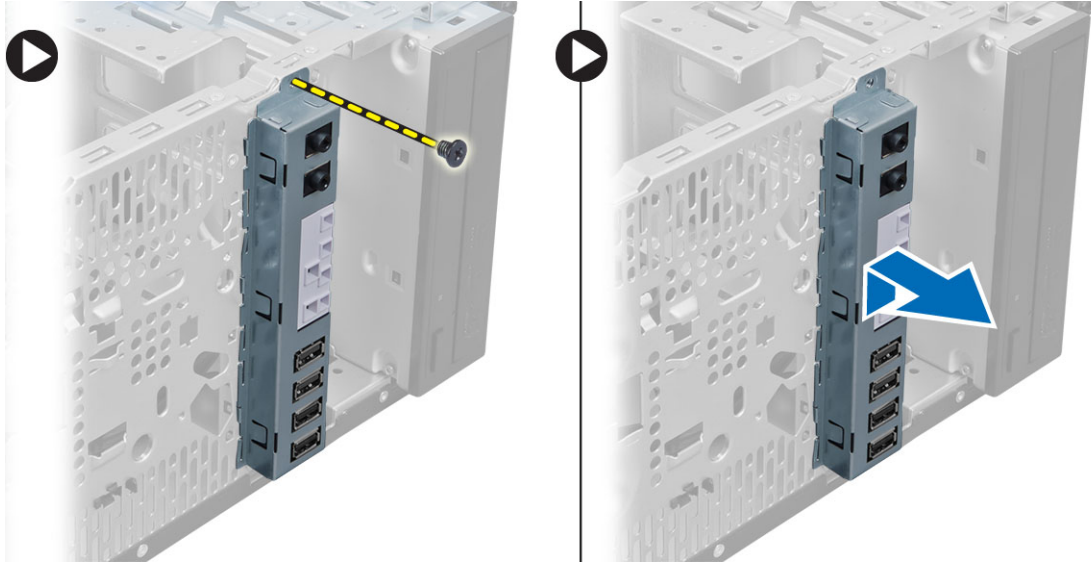


4. Unthread and release the I/O Panel, data cable and USB data cable from the clip on the computer.



5. Remove the screw that secures the I/O panel to the computer.
6. Slide the I/O panel towards the left of the computer to release it and pull the I/O panel along with its cable out of the computer.



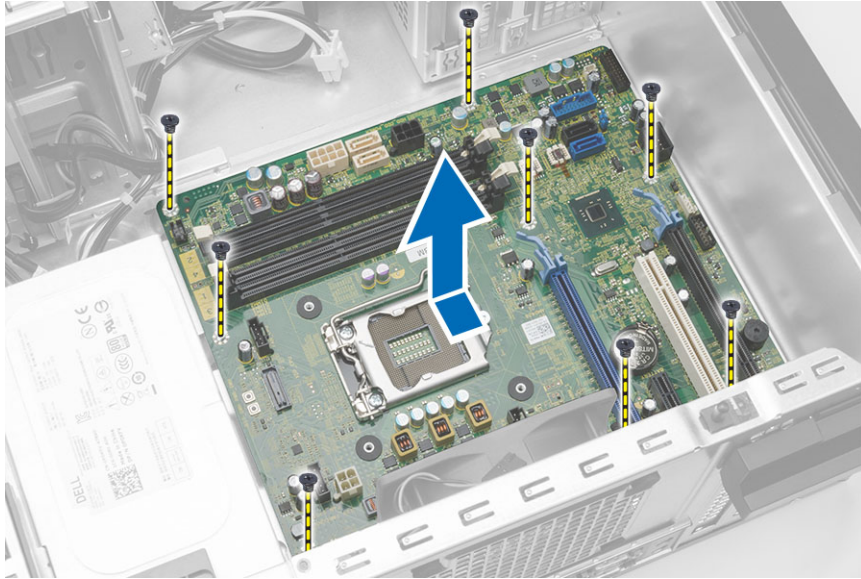


## Installing the Input/Output (I/O) Panel

1. Insert the I/O panel into the slot on the chassis front.
2. Slide the I/O panel towards the right of the computer to secure to the chassis.
3. Tighten the screw to secure the I/O panel to the chassis.
4. Thread the I/O panel, data cable and USB data cable into the chassis clip.
5. Connect the I/O panel, data cable and USB data cable to the system board.
6. Install :
  - a) front bezel
  - b) cover
7. Follow the procedures in *After Working Inside Your Computer*.

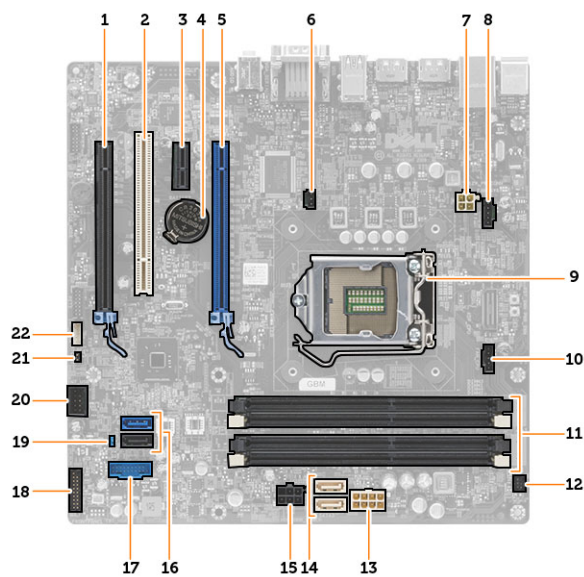
## Removing the System Board

1. Follow the procedures in *Before Working Inside Your Computer*.
2. Remove the:
  - a) cover
  - b) memory
  - c) expansion card(s)
  - d) heat-sink assembly
  - e) processor
3. Disconnect all the cables connected to the system board.
4. Remove the screws that secure the system board to the computer and slide the system board towards the front of the computer.



5. Tilt the system board at 45-degrees, and then lift the system board out of the computer.

## System Board Components



**Figure 1. Components Of The System Board**

- |                                       |                                  |
|---------------------------------------|----------------------------------|
| 1. PCI Express x16 slot (wired as x4) | 7. 4-pin CPU power connector     |
| 2. PCI slot                           | 8. system fan connector          |
| 3. PCIe x1 slot                       | 9. CPU Socket                    |
| 4. coin-cell battery                  | 10. heat-sink fan connector      |
| 5. PCI Express x16 slot               | 11. DDR DIMM memory slots (4)    |
| 6. intrusion switch connector         | 12. front power-switch connector |

13. 8-pin power connector
14. SATA connectors
15. HDD and optical drive power connector
16. SATA connectors
17. front panel USB connector
18. front panel audio connector
19. password reset jumper
20. internal USB 2.0 connector
21. RTCRST jumper connector
22. speaker connector

## Installing the System Board

1. Align the system board to the port connectors on the rear of the chassis and place the system board in the chassis.
2. Tighten the screws securing the system board to the chassis.
3. Connect the cables to the system board.
4. Install the:
  - a) processor
  - b) heat-sink assembly
  - c) expansion card(s)
  - d) memory
  - e) cover
5. Follow the procedures in *After Working Inside Your Computer*.



# Using The System Setup Program And Boot Manager

The System Setup program is the BIOS program that enables you to manage your system hardware and specify BIOS-level options. From the System Setup program, you can:


- Change the NVRAM settings after you add or remove hardware
- View the system hardware configuration
- Enable or disable integrated devices
- Set performance and power management thresholds
- Manage system security


## Boot Sequence

Boot Sequence allows you to bypass the System Setup-defined boot device order and boot directly to a specific device (for example: optical drive or hard drive). During the Power-on Self Test (POST), when the Dell logo appears, you can:

- Access System Setup by pressing <F2> key
- Bring up the one-time boot menu by pressing <F12> key

The one-time boot menu displays the devices that you can boot from including the diagnostic option. The boot-menu options are:


- Removable Drive (if available)
  - STXXXX Drive
-  **NOTE:** XXX denotes the SATA drive number.
- Optical Drive
  - Diagnostics

 **NOTE:** Choosing Diagnostics, will display the **ePSA diagnostics** screen.


The boot sequence screen also displays the option to access the System Setup screen.

## Navigation Keys


The following table displays the system setup navigation keys.

 **NOTE:** For most of the system setup options, changes that you make are recorded but do not take effect until you restart the system.

**Table 1. Navigation Keys**

| Keys       | Navigation   |
|------------|--|
| Up arrow   | Moves to the previous field.   |
| Down arrow | Moves to the next field.   |
| <Enter>    | Allows you to select a value in the selected field (if applicable) or follow the link in the field.  |
| Spacebar   | Expands or collapses a drop-down list, if applicable.  |
| <Tab>      | Moves to the next focus area.  |
|            |  <b>NOTE:</b> For the standard graphics browser only.   |
| <Esc>      | Moves to the previous page till you view the main screen. Pressing <Esc> in the main screen displays a message that prompts you to save any unsaved changes and restarts the system. |
| <F1>       | Displays the System Setup help file.   |

## System Setup Options



 **NOTE:** Depending on the computer and its installed devices, the items listed in this section may or may not appear


**Table 2. General**

| Option                | Description   |
|-----------------------|---|
| System Information    | <p>Displays the following information:</p> <ul style="list-style-type: none"> <li>• <b>System Information</b> - Displays <b>BIOS Version, Service Tag, Asset Tag, Ownership Tag, Ownership Date, Manufacture Date,</b> and the <b>Express Service Code.</b></li> <li>• <b>Memory Information</b> - Displays <b>Memory Installed, Memory Available, Memory Speed, Memory Channels Mode, Memory Technology, DIMM 1 Size, DIMM 2 Size, DIMM 3 Size</b> and <b>DIMM 4 Size.</b></li> <li>• <b>PCI Information</b> - Displays <b>SLOT1, SLOT2, SLOT3, and SLOT4.</b></li> <li>• <b>Processor Information</b> - Displays <b>Processor Type, Core Count, Processor ID, Current Clock Speed, Minimum Clock Speed, Maximum Clock Speed, Processor L2 Cache, Processor L3 Cache, HT Capable,</b> and <b>64-Bit Technology.</b></li> <li>• <b>Device Information</b> - Displays <b>SATA-0, SATA-1, SATA-2, SATA-3, LOM MAC Address, Audio Controller</b> and <b>Video Controller.</b></li> </ul> |
| Boot Sequence         | <p>Allows you to specify the order in which the computer attempts to find an operating system. The options are:</p> <ul style="list-style-type: none"> <li>• Diskette drive</li> <li>• STXXXXXX / STXXXXXX</li> <li>• USB Storage Device</li> <li>• CD/DVD/CD-RW Drive</li> <li>• Onboard NIC</li> </ul>  |
| Advanced Boot Options | <ul style="list-style-type: none"> <li>• Legacy</li> <li>• UEFI</li> <li>• Enable Legacy Option ROMs (this option is enabled by default)</li> </ul>   |

| Option    | Description  |
|-----------|--|
| Date/Time | Allows you to set the date and time. The changes to the system date and time takes effect immediately. |

**Table 3. System Configuration**



| Option         | Description  |
|----------------|--|
| Integrated NIC | <p>Allows you to enable or disable the integrated network card. You can set the integrated NIC to:</p> <ul style="list-style-type: none"> <li>• Disabled</li> <li>• Enabled</li> <li>• Enabled w/PXE (this option is enabled by default)</li> <li>• Enabled w/Cloud Desktop</li> <li>• Enable UEFI Network Stack</li> </ul> <p> <b>NOTE:</b> Depending on the computer and the devices installed, the items listed in this section may or may not appear.</p> |
| Serial Port    | <p>Allows you to define the serial port settings. You can set the serial port to:</p> <ul style="list-style-type: none"> <li>• Disabled</li> <li>• COM1</li> <li>• COM2</li> <li>• COM3</li> <li>• COM4</li> </ul> <p> <b>NOTE:</b> The operating system may allocate resources even though the setting is disabled.</p>  |
| SATA Operation | <p>Allows you to configure the operating mode of the integrated hard drive controller.</p> <ul style="list-style-type: none"> <li>• <b>Disabled</b> - The SATA controllers are hidden.</li> <li>• <b>ATA</b> - SATA is configured for ATA mode.</li> <li>• <b>AHCI</b> - SATA is configured for AHCI mode.</li> <li>• <b>RAID ON</b> - SATA is configured to support RAID mode.</li> </ul>   |
| Drives         | <p>Allows you to enable or disable the various on-board drives:</p> <p>For Mini Tower</p> <ul style="list-style-type: none"> <li>• SATA-0</li> <li>• SATA-1</li> <li>• SATA-2</li> <li>• SATA-3</li> </ul> <p>For Small Form Factor</p> <ul style="list-style-type: none"> <li>• SATA-0</li> <li>• SATA-1</li> <li>• SATA-2</li> </ul>   |

| Option                                      | Description   |
|---|---|
| SMART Reporting                             | <p>This field controls if the hard drive errors for the integrated drives are reported during system startup. This technology is part of the SMART (Self Monitoring Analysis and Reporting Technology) specification.</p> <ul style="list-style-type: none"> <li>• <b>Enable SMART Reporting</b> - This option is disabled by default.</li> </ul>   |
| USB Configuration                           | <p>This field configures the integrated USB controller. If <i>Boot Support</i> is enabled, the system is allowed to boot any type of USB mass storage devices (HDD, memory key, floppy).</p> <p>If USB port is enabled, device attached to this port is enabled and available for operation system.</p> <p>If USB port is disabled, the operation system cannot see any device attached to this port.</p> <p>The options for USB configuration may differ based on the form factors:</p> <ul style="list-style-type: none"> <li>• Enable Boot Support</li> <li>• Enable Front USB 2.0 Ports</li> <li>• Enable USB 3.0 Ports</li> <li>• Enable Rear–left Dual USB 2.0 Ports</li> <li>• Enable Rear –right Dual USB 2.0 Ports (this option is enabled by default)</li> </ul> <p> <b>NOTE:</b> USB keyboard and mouse always work in the BIOS setup irrespective of these settings.</p> |
| Audio                                       | <p>Allows you to enable or disable the integrated audio controller.</p> <ul style="list-style-type: none"> <li>• <b>Enable Audio</b> — this option is enabled by default.</li> </ul>  |
| Miscellaneous Devices (For Mini Tower only) | <p>Allows you to enable or disable various on-board devices.</p> <ul style="list-style-type: none"> <li>• <b>Enable PCI Slot</b> - This option is enabled by default.</li> </ul>  |

**Table 4. Security**



| Option                                | Description  |
|---------------------------------------|--|
| Internal HDD_0 Password               | <p>This field lets you set, change, or delete the administrator (admin) password (sometimes called the setup password). The admin password enables several security features.</p> <p>The drive does not have a password set by default.</p> <ul style="list-style-type: none"> <li>• Enter the old password</li> <li>• Enter the new password</li> <li>• Confirm the new password</li> </ul> |
| Strong Password (For Mini Tower only) | <p><b>Enable strong password</b> - This option is disabled by default.</p>   |
| Password Configuration                | <p>This field controls the minimum and maximum number of characters allowed for the admin and system passwords.</p> <ul style="list-style-type: none"> <li>• Admin Password Min</li> <li>• Admin Password Max</li> <li>• System Password Min</li> </ul>  |



| Option               | Description   |
|----------------------|---|
|                      | <ul style="list-style-type: none"> <li>System Password Max</li> </ul>   |
| Password Bypass      | <p>Allows you to bypass the <i>System Password</i> and the internal HDD password prompts during a system restart.</p> <ul style="list-style-type: none"> <li>Disabled - Always prompt for the system and internal HDD password when they are set. This option is disabled by default.</li> <li>Reboot Bypass - Bypass the password prompts on restarts (warm boots).</li> </ul> <p> <b>NOTE:</b> The system will always prompt for the system and internal HDD passwords when powered on from the off state (a cold boot). Also, the system will always prompt for passwords on any module bay HDDs that may be present.</p> |
| Password Change      | <p>Allows you to determine whether changes to the system and hard disk passwords are permitted when an administrator password is set.</p> <ul style="list-style-type: none"> <li><b>Allow Non-Admin Password Changes</b> - This option is enabled by default.</li> </ul>  |
| TPM Security         | <p>This option lets you control whether the Trusted Platform Module (TPM) in the system is enabled and visible to the operating system.</p> <p><b>TPM Security</b> - This option is disabled by default.</p> <p><b>TPM ACPI Support</b></p> <p><b>TPM PPI Deprovision Override</b></p> <p><b>Clear</b></p> <p><b>TPM PPI Provision Override</b></p> <p> <b>NOTE:</b> Activation, deactivation, and clear options are not affected if you load the setup program's default values. Changes to this option take effect immediately.</p>   |
| Computrace           | <p>This field lets you activate or disable the BIOS module interface of the optional <i>Computrace Service</i> from <i>Absolute Software</i>.</p> <ul style="list-style-type: none"> <li><b>Deactivate</b> - This option is disabled by default.</li> <li>Disable</li> <li>Activate</li> </ul>  |
| Chassis Intrusion    | <p>Allows you to enable or disable the chassis intrusion alert.</p> <ul style="list-style-type: none"> <li>Disable</li> <li>Enable (this option is enabled by default)</li> <li>On-Silent</li> </ul>  |
| CPU XD Support       | <p>Allows you to enable or disable the execute disable mode of the processor.</p> <ul style="list-style-type: none"> <li><b>Enable CPU XD Support</b> - This option is enabled by default.</li> </ul>   |
| OROM Keyboard Access | <p>Allows you to determine if you access the Option Read Only Memory (OROM) configuration screens via hotkeys during boot. These settings prevent access to the Intel RAID (CTRL+I) or Intel Management Engine BIOS Extension (CTRL+P/F12).</p> <ul style="list-style-type: none"> <li><b>Enable</b> - User may enter OROM configuration screens via the hotkey.</li> <li><b>One-Time Enable</b> - User can enter the OROM configuration screens via the hotkeys during the next boot. After the boot, the setting will revert to disabled.</li> <li><b>Disable</b> - User can not enter the OROM configuration screens via the hotkey.</li> </ul>  |



| Option              | Description   |
|---------------------|---|
| Admin Setup Lockout | <p>This option is set to <b>Enable</b> by default.</p> <p>Allows you to enable or disable the option to enter setup when an admin password is set.</p> <ul style="list-style-type: none"> <li>• <b>Enable Admin Setup Lockout</b> - This option is not set by default.</li> </ul> |

**Table 5. Secure Boot**

|                       |   |
|-----------------------|---|
| Secure Boot Enable    | <p>Allows you to enable or disable Secure Boot feature</p> <ul style="list-style-type: none"> <li>• Disable</li> <li>• Enable</li> </ul> <p> <b>NOTE:</b> For enable system need to be UEFI boot mode and enable legacy option ROMs to be turned off.</p>  |
| Expert key Management | <p>Allows you to manipulate the security key databases only if the system is in Custom Mode. The <b>Enable Custom Mode</b> option is disabled by default. The options are:</p> <ul style="list-style-type: none"> <li>• PK</li> <li>• KEK</li> <li>• db</li> <li>• dbx</li> </ul> <p>If you enable the <b>Custom Mode</b>, the relevant options for <b>PK, KEK, db, and dbx</b> appear. The options are:</p> <ul style="list-style-type: none"> <li>• <b>Save to File</b>- Saves the key to a user-selected file</li> <li>• <b>Replace from File</b>- Replaces the current key with a key from a user-selected file</li> <li>• <b>Append from File</b>- Adds a key to the current database from a user-selected file</li> <li>• <b>Delete</b>- Deletes the selected key</li> <li>• <b>Reset All Keys</b>- Resets to default setting</li> <li>• <b>Delete All Keys</b>- Deletes all the keys</li> </ul> <p> <b>NOTE:</b> If you disable the Custom Mode, all the changes made will be erased and the keys will restore to default settings.</p> |



**Table 6. Performance**

| Option             | Description  |
|--------------------|--|
| Multi Core Support | <p>Specifies whether the process will have one or all cores enabled. The performance of some applications will improve with the additional cores.</p> <ul style="list-style-type: none"> <li>• All - Enabled by default</li> <li>• 1</li> <li>• 2</li> </ul> |
| Intel SeepdStep    | <p>Allows you to enable or disable the Intel SpeedStep mode of the processor. This option is enabled by default.</p>   |

| Option                 | Description  |
|------------------------|--|
| C States Control       | Allows you to enable or disable the additional processor sleep states. This option is enabled by default.  |
| Limit CPUID Value      | <p>This field limits the maximum value the processor Standard CPUID Function will support</p> <ul style="list-style-type: none"> <li>• Enable CPUID Limit (this option is disabled by default)</li> </ul> <p> <b>NOTE:</b> Some Operating system will not complete installation when the maximum CPUID Function is greater than 3</p>   |
| Intel TurboBoost       | <p>Allows you to enable or disable Intel TurboBoost mode of the processor.</p> <ul style="list-style-type: none"> <li>• <b>Disabled</b> - Does not allow the TurboBoost driver to increase the performance state of the processor above the standard performance.</li> <li>• <b>Enabled</b> - Allows the Intel TurboBoost driver to increase the performance of the CPU or graphics processor.</li> </ul>  |
| Hyper-Thread Control   | Allows you to enable or disable the Hyper-Threading technology. This option is enabled by default.   |
| Rapid Start Technology | <p>Allows you to improve batter life by automatically putting the system into a low power status during after user specified amount of time.</p> <ul style="list-style-type: none"> <li>• Intel Rapid Start feature (this option is disabled by default)</li> </ul> <p> <b>NOTE:</b> Rapid Start Technology will automatically be disabled due to configuration changes:</p> <ul style="list-style-type: none"> <li>• Hard Disk Configuration or partition have been changed</li> <li>• Memory capacity over 8GB installed.</li> <li>• System or HDD password is enabled</li> <li>• A Dell Encryption Accelerator is installed</li> <li>• The Block Sleep setting is enabled</li> </ul> |

**Table 7. Power Management**

| Option       | Description   |
|--------------|---|
| AC Recovery  | <p>Specifies how the computer will respond when AC power is applied after an AC power loss. You can set the AC Recovery to:</p> <ul style="list-style-type: none"> <li>• Power Off (default)</li> <li>• Power On</li> <li>• Last Power State</li> </ul>   |
| Auto On Time | <p>This option sets the time of the day when you would like the system to turn on automatically. Time is kept in standard 12-hour format (hour:minutes:seconds). The startup time can be changed by typing the values in the time and A.M./P.M. fields.</p> <ul style="list-style-type: none"> <li>• <b>Disabled</b> - The system will not automatically power up.</li> <li>• <b>Every Day</b> - The system will power up every day at the time you specified above .</li> <li>• <b>Weekdays</b> - The system will power up Monday through Friday at the time you specified above.</li> </ul> |

| Option                         | Description   |
|--------------------------------|---|
|                                | <ul style="list-style-type: none"> <li>• <b>Select Days</b> - The system will power up on days selected above at the time you specified above.</li> </ul> <p> <b>NOTE:</b> This feature does not work if you turn off your computer using the switch on a power strip or surge protector or if <b>Auto Power is set to disabled</b>.</p>   |
| Deep Sleep Control             | <p>Allows you to define the controls when Deep Sleep is enabled.</p> <ul style="list-style-type: none"> <li>• Disabled</li> <li>• Enabled in S5 only</li> <li>• Enabled in S4 and S5</li> </ul> <p>This option is disabled by default.</p>  |
| Fan Control Override           | <p>Controls the speed of the system fan. This option is disabled by default.</p> <p> <b>NOTE:</b> When enabled, the fan runs at full speed.</p>  |
| USB Wake Support               | <p>This option allows you to enable USB devices to wake the computer from standby.</p> <ul style="list-style-type: none"> <li>• <b>Enable USB Wake Support</b> - This option is disabled by default.</li> </ul>   |
| Wake on LAN                    | <p>This option allows the computer to power up from the off state when triggered by a special LAN signal. Wake-up from the Standby state is unaffected by this setting and must be enabled in the operating system. This feature only works when the computer is connected to AC power supply. The options differ based on the form factor.</p> <ul style="list-style-type: none"> <li>• <b>Disabled</b> - Does not allow the system to power on by special LAN signals when it receives a wake-up signal from the LAN or wireless LAN.</li> <li>• <b>LAN Only</b> - Allows the system to be powered on by special LAN signals.</li> <li>• <b>WLAN Only</b> - Allows the system to be powered on by special WLAN signals. (For Ultra Small Form Factor only)</li> <li>• <b>LAN or PXE Boot</b> - Allows the system to be powered on by special LAN or PXE Bootsignals. (For Ultra Small Form Factor only)</li> </ul> <p>This option is Disabled by default.</p> |
| Block Sleep                    | <p>This option lets you block entering to sleep (S3 state) in operating system environment.</p> <ul style="list-style-type: none"> <li>• <b>Block Sleep (S3 state)</b> - This option is disabled by default.</li> </ul>   |
| Intel Smart Connect Technology | <p>The option is disabled by default. If option enables will periodically sense nearby wireless connection while the system is asleep. It will synchronize emails or social media application that were open when system entered the sleep state.</p> <ul style="list-style-type: none"> <li>• Smart Connection</li> </ul>  |

**Table 8. POST Behavior**

| Option          | Description  |
|-----------------|--|
| Numlock LED     | Specifies if the NumLock function can be enabled when the system boots. This option is enabled by default. |
| Keyboard Errors | Specifies whether keyboard related errors are reported when it boots. This option is enabled by default.   |

| Option       | Description  |
|--------------|--|
| MEBx Hotkeys | Specifies whether the MEBx Hotkey function should be enable when the system boots. <ul style="list-style-type: none"> <li>• <b>Enable MEBx Hotkey</b> — This option is enabled by default</li> </ul> |



**Table 9. Virtualization Support**







| Option            | Description  |
|-------------------|--|
| Virtualization    | This option specifies whether a Virtual Machine Monitor (VMM) can utilize the additional hardware capabilities provided by Intel Virtualization technology. <ul style="list-style-type: none"> <li>• <b>Enable Intel Virtualization Technology</b> - This option is enabled by default.</li> </ul>   |
| VT for Direct I/O | Enables or disables the Virtual Machine Monitor (VMM) from utilizing the additional hardware capabilities provided by Intel® Virtualization technology for direct I/O. <ul style="list-style-type: none"> <li>• <b>Enable Intel Virtualization Technology for Direct I/O</b> - This option is enabled by default.</li> </ul>   |
| Trusted Execution | This option specifies whether a Measured Virtual Machine Monitor (MVMM) can utilize the additional hardware capabilities provided by Intel Trusted Execution technology. The TPM virtualization technology, and Virtualization technology for direct I/O must be enabled to use this feature. <ul style="list-style-type: none"> <li>• <b>Trusted Execution</b> - This option is disabled by default.</li> </ul> |

**Table 10. Maintenance**

| Option        | Description  |
|---------------|--|
| Service Tag   | Displays the service tag of your computer.   |
| Asset Tag     | Allows you to create a system asset tag if an asset tag is not already set. This option is not set by default.                                   |
| SERR Messages | Controls the SERR message mechanism. This option is not set by default. Some graphics cards require that the SERR message mechanism be disabled. |

**Table 11. Cloud Desktop**

| Option               | Description  |
|----------------------|--|
| Server Lookup Method | Specifies how the ImageServer looks up the server address. <ul style="list-style-type: none"> <li>• Static IP</li> <li>• DNS (enabled by default)</li> </ul> <p> <b>NOTE:</b> This field is only relevant when the <i>Integrated NIC</i> control in the <i>System Configuration</i> group is set to <i>Enabled with ImageServer</i>.</p>  |
| Server IP Address    | Specifies the primary static IP address of the ImageServer with which the client software communicates. The default IP address is <b>255.255.255.255</b> . <p> <b>NOTE:</b> This field is only relevant when the <i>Integrated NIC</i> control in the <i>System Configuration</i> group is set to <i>Enabled with ImageServer</i> and when <i>Lookup Method</i> is set to <i>Static IP</i>.</p> |

| Option                | Description   |
|-----------------------|---|
| Server Port           | <p>Specifies the primary IP port of the ImageServer, which is used by the client to communicate. The default IP port is <b>06910</b>.</p> <p> <b>NOTE:</b> This field is only relevant when the <i>Integrated NIC</i> control in the <i>System Configuration</i> group is set to <i>Enabled with ImageServer</i>.</p>                      |
| Client Address Method | <p>Specifies how the client obtains the IP address.</p> <ul style="list-style-type: none"> <li>• Static IP</li> <li>• DHCP (enabled by default)</li> </ul> <p> <b>NOTE:</b> This field is only relevant when the <i>Integrated NIC</i> control in the <i>System Configuration</i> group is set to <i>Enabled with ImageServer</i>.</p>     |
| Client IP Address     | <p>Specifies the static IP address of the client. The default IP address is <b>255.255.255.255</b>.</p> <p> <b>NOTE:</b> This field is only relevant when the <i>Integrated NIC</i> control in the <i>System Configuration</i> group is set to <i>Enabled with ImageServer</i> and when <i>Client DHCP</i> is set to <i>Static IP</i>.</p> |
| Client SubnetMask     | <p>Specifies the subnet mask of the client. The default setting is <b>255.255.255.255</b>.</p> <p> <b>NOTE:</b> This field is only relevant when the <i>Integrated NIC</i> control in the <i>System Configuration</i> group is set to <i>Enabled with ImageServer</i> and when <i>Client DHCP</i> is set to <i>Static IP</i>.</p>          |
| Client Gateway        | <p>Specifies the gateway IP address for the client. The default setting is <b>255.255.255.255</b>.</p> <p> <b>NOTE:</b> This field is only relevant when the <i>Integrated NIC</i> control in the <i>System Configuration</i> group is set to <i>Enabled with ImageServer</i> and when <i>Client DHCP</i> is set to <i>Static IP</i>.</p> |
| Advanced              | <p>Specifies for Advanced debugging</p> <ul style="list-style-type: none"> <li>• Verbose Mode (this option is disabled by default)</li> </ul> <p> <b>NOTE:</b> This Option is only relevant when the integrated NIC control in the System Configuration group is set to enable with Cloud Desktop.</p>                                   |

**Table 12. System Logs**

| Option      | Description   |
|-------------|---|
| BIOS events | <p>Displays the system event log and allows you to clear the log.</p> <ul style="list-style-type: none"> <li>• Clear Log</li> </ul> |

## Updating the BIOS

It is recommended to update your BIOS (system setup), on replacing the system board or if an update is available. For laptops, ensure that your computer battery is fully charged and connected to a power outlet

1. Restart the computer.
2. Go to [dell.com/support](http://dell.com/support).
3. If you have your computer's Service Tag or Express Service Code:

 **NOTE:** To locate the Service Tag, click **Where is my Service Tag?**

 **NOTE:** If you cannot find your Service Tag, click **Detect Service Tag**. Proceed with the instructions on screen.

4. Enter the **Service Tag** or **Express Service Code** and click **Submit**.
5. If you are unable to locate or find the Service Tag, click the Product Category of your computer.
6. Choose the **Product Type** from the list.
7. Select your computer model and the **Product Support** page of your computer appears.
8. Click **Drivers & Downloads**.
9. On the Drivers and Downloads screen, under the **Operating System** drop-down list, select **BIOS**.
10. Identify the latest BIOS file and click **Download File**.
11. Select your preferred download method in the **Please select your download method below window**; click **Download File**.  
The **File Download** window appears.
12. Click **Save** to save the file on your computer.
13. Click **Run** to install the updated BIOS settings on your computer.  
Follow the instructions on the screen.

## Jumper Settings

To change a jumper setting, pull the plug off its pin(s) and carefully fit it down onto the pin(s) indicated on the system board. The following table displays the system board jumper settings.

**Table 13. Jumper Settings**


| Jumper | Setting     | Description   |
|--------|-------------|---|
| PSWD   | Default     | Password features are enabled                           |
| RTCST  | pin 1 and 2 | Real-time clock reset. Can be used for troubleshooting. |


## System and Setup Password

You can create a system password and a setup password to secure your computer.

| Password Type          | Description  |
|------------------------|--|
| <b>System password</b> | Password that you must enter to log on to your system.   |
| <b>Setup password</b>  | Password that you must enter to access and make changes to the BIOS settings of your computer. |

 **CAUTION:** The password features provide a basic level of security for the data on your computer.

 **CAUTION:** Anyone can access the data stored on your computer if it is not locked and left unattended.

 **NOTE:** Your computer is shipped with the system and setup password feature disabled.

### Assigning a System Password and Setup Password

You can assign a new **System Password** and/or **Setup Password** or change an existing **System Password** and/or **Setup Password** only when **Password Status** is **Unlocked**. If the Password Status is **Locked**, you cannot change the System Password.



**NOTE:** If the password jumper is disabled, the existing System Password and Setup Password is deleted and you need not provide the system password to log on to the computer.

To enter a system setup, press <F2> immediately after a power-on or reboot.

1. In the **System BIOS** or **System Setup** screen, select **System Security** and press <Enter>. The **System Security** screen appears.
2. In the **System Security** screen, verify that **Password Status** is **Unlocked**.
3. Select **System Password**, enter your system password, and press <Enter> or <Tab>. Use the following guidelines to assign the system password:
  - A password can have up to 32 characters.
  - The password can contain the numbers 0 through 9.
  - Only lower case letters are valid, upper case letters are not allowed.
  - Only the following special characters are allowed: space, ("), (+), (,), (-), (.), (/), (:), (I), (\), (l), (c).

Re-enter the system password when prompted.

4. Type the system password that you entered earlier and click **OK**.
5. Select **Setup Password**, type your system password and press <Enter> or <Tab>. A message prompts you to re-type the setup password.
6. Type the setup password that you entered earlier and click **OK**.
7. Press <Esc> and a message prompts you to save the changes.
8. Press <Y> to save the changes. The computer reboots.

## Deleting or Changing an Existing System and/or Setup Password

Ensure that the **Password Status** is Unlocked (in the System Setup) before attempting to delete or change the existing System and/or Setup password. You cannot delete or change an existing System or Setup password, if the **Password Status** is Locked.

To enter the System Setup, press <F2> immediately after a power-on or reboot.

1. In the **System BIOS** or **System Setup** screen, select **System Security** and press <Enter>. The **System Security** screen is displayed.
2. In the **System Security** screen, verify that **Password Status** is **Unlocked**.
3. Select **System Password**, alter or delete the existing system password and press <Enter> or <Tab>.
4. Select **Setup Password**, alter or delete the existing setup password and press <Enter> or <Tab>.




**NOTE:** If you change the System and/or Setup password, re-enter the new password when prompted. If you delete the System and/or Setup password, confirm the deletion when prompted.

5. Press <Esc> and a message prompts you to save the changes.
6. Press <Y> to save the changes and exit from the System Setup. The computer reboots.


## Disabling a System Password

The system's software security features include a system password and a setup password. The password jumper disables any password(s) currently in use.




 **NOTE:** You can also use the following steps to disable a forgotten password.

1. Follow the procedures in *Before Working on Your Computer*.
2. Remove the cover.
3. Identify the PSWD jumper on the system board.
4. Remove the PSWD jumper from the system board.

 **NOTE:** The existing passwords are not disabled (erased) until the computer boots without the jumper.

5. Install the cover.

 **NOTE:** If you assign a new system and/or setup password with the PSWD jumper installed, the system disables the new password(s) the next time it boots.

6. Connect the computer to the electrical outlet and power-on the computer.
7. Power-off the computer and disconnect the power cable from the electrical outlet.
8. Remove the cover.
9. Replace the PSWD jumper on the system board.
10. Install the cover.
11. Follow the procedures in *After Working on Your Computer*.
12. Power-on the computer.
13. Go to the system setup, and assign a new system or setup password. See *Setting up a System Password*.


## Diagnostics


If you experience a problem with your computer, run the ePSA diagnostics before contacting Dell for technical assistance. The purpose of running diagnostics is to test your computer's hardware without requiring additional equipment or risking data loss. If you are unable to fix the problem yourself, service and support personnel can use the diagnostics results to help you solve the problem.

### Enhanced Pre-Boot System Assessment (ePSA) Diagnostics

The ePSA diagnostics (also known as system diagnostics) performs a complete check of your hardware. The ePSA is embedded with the BIOS and is launched by the BIOS internally. The embedded system diagnostics provides a set of options for particular devices or device groups allowing you to:

- Run tests automatically or in an interactive mode
- Repeat tests
- Display or save test results
- Run thorough tests to introduce additional test options to provide extra information about the failed device(s)
- View status messages that inform you if tests are completed successfully
- View error messages that inform you of problems encountered during testing

 **CAUTION:** Use the system diagnostics to test only your computer. Using this program with other computers may cause invalid results or error messages.

 **NOTE:** Some tests for specific devices require user interaction. Always ensure that you are present at the computer terminal when the diagnostic tests are performed.

1. Power-on the computer.
2. As the computer boots, press the <F12> key as the Dell logo appears.

3. On the boot menu screen, select the **Diagnostics** option.  
The **Enhanced Pre-boot System Assessment** window is displayed, listing all devices detected in the computer. The diagnostics starts running the tests on all the detected devices.
4. If you wish to run a diagnostic test on a specific device, press <Esc> and click **Yes** to stop the diagnostic test.
5. Select the device from the left pane and click **Run Tests**.
6. If there are any issues, error codes are displayed.  
Note the error code and contact Dell.

## Troubleshooting Your Computer

You can troubleshoot your computer using indicators like Diagnostic Lights, Beep Codes, and Error Messages during the operation of the computer.

### Power LED Diagnostics

The power button LED located on the front of the chassis also functions as a bicolored diagnostic LED. The diagnostic LED is only active and visible during the POST process. Once the operating system starts to load, it is no longer visible. Amber LED blinking scheme – The pattern is 2 or 3 blinks followed by a short pause then x number of blinks up to 7. The repeated pattern has a long pause inserted in the middle. For example 2,3 = 2 amber blinks, short pause, 3 amber blinks followed by long pause then repeats.

**Table 14. Power LED Diagnostics**

| Amber LED State | White LED State | Description                             |
|-----------------|-----------------|---|
| off             | off             | system is OFF                           |
| off             | blinking        | system is in sleep state                |
| blinking        | off             | power supply unit (PSU) failure         |
| steady          | off             | PSU is working but failed to fetch code |
| off             | steady          | system is ON                            |

| Amber LED State | Description                                       |
|-----------------|---|
| 2,1             | system board failure                              |
| 2,2             | system board, PSU or PSU cabling failure          |
| 2,3             | system board, memory or CPU failure               |
| 2, 4            | coin-cell battery failure                         |
| 2,5             | corrupt BIOS                                      |
| 2,6             | CPU configuration failure or CPU failure          |
| 2,7             | memory modules are detected, but a memory failure |
| 3,1             | possible peripheral card or system board failure  |
| 3,2             | possible USB failure                              |
| 3,3             | no memory modules are detected                    |

| <b>Amber LED State</b> | <b>Description</b>   |
|------------------------|--|
| <b>3,4</b>             | possible system board error  |
| <b>3,5</b>             | memory modules are detected, but a memory configuration or compatibility error |
| <b>3,6</b>             | possible system board resource and/or hardware failure                         |
| <b>3,7</b>             | some other failure with messages on screen                                     |

## Beep Code

The computer can emit a series of beeps during start-up if the display does not show errors or problems. These series of beeps, called beep codes, identify various problems. The delay between each beep is 300 ms, the delay between each set of beeps is 3 sec, and the beep sound lasts 300 ms. After each beep and each set of beeps, the BIOS should detect if the user presses the power button. If so, BIOS will jump out from looping and execute the normal shutdown process and power system.

|              |                |
|--------------|----------------|
| <b>Code</b>  | 1-3-2          |
| <b>Cause</b> | Memory failure |

## Error Messages



| <b>Error Message</b>   | <b>Description</b>  |
|--|---|
| <b>Address mark not found</b>  | The BIOS found a faulty disk sector or could not find a particular disk sector.   |
| <b>Alert! Previous attempts at booting this system have failed at checkpoint [nnnn]. For help in resolving this problem, please note this checkpoint and contact Dell Technical Support.</b> | The computer failed to complete the boot routine three consecutive times for the same error. Contact Dell and report the checkpoint code (nnnn) to the support technician |
| <b>Alert! Security override Jumper is installed.</b>   | The MFG_MODE jumper has been set and AMT Management features are disabled until it is removed.  |
| <b>Attachment failed to respond</b>  | The floppy or hard drive controller cannot send data to the associated drive.   |
| <b>Bad command or file name</b>  | Ensure that you have spelled the command correctly, put spaces in the proper place, and used the correct pathname.  |
| <b>Bad error-correction code (ECC) on disk read</b>  | The floppy or hard drive controller detected an uncorrectable read error.   |

| <b>Error Message</b>  | <b>Description</b>  |
|---|---|
| <b>Controller has failed</b>  | The hard drive or the associated controller is defective.   |
| <b>Data error</b>   | The floppy or hard drive cannot read the data. For the Windows operating system, run the chkdsk utility to check the file structure of the floppy or hard drive. For any other operating system, run the appropriate corresponding utility. |
| <b>Decreasing available memory</b>  | One or more memory modules may be faulty or improperly seated. Re-install the memory modules and, if necessary, replace them.   |
| <b>Diskette drive 0 seek failure</b>                                      | A cable may be loose or the computer configuration information may not match the hardware configuration.  |
| <b>Diskette read failure</b>  | The floppy disk may be defective or a cable may be loose. If the drive access light turns on, try a different disk.   |
| <b>Diskette subsystem reset failed</b>                                    | The floppy drive controller may be faulty.  |
| <b>Gate A20 failure</b>   | One or more memory modules may be faulty or improperly seated. Reinstall the memory modules and, if necessary, replace them.  |
| <b>General failure</b>  | The operating system is unable to carry out the command. This message is usually followed by specific information—for example, <b>Printer out of paper</b> . Take the appropriate action to resolve the problem.                            |
| <b>Hard-disk drive configuration error</b>                                | The hard drive failed initialization.   |
| <b>Hard-disk drive controller failure</b>                                 | The hard drive failed initialization.   |
| <b>Hard-disk drive failure</b>  | The hard drive failed initialization.   |
| <b>Hard-disk drive read failure</b>                                       | The hard drive failed initialization.   |
| <b>Invalid configuration information-please run SETUP program</b>         | The computer configuration information does not match the hardware configuration.   |
| <b>Invalid Memory configuration, please populate DIMM1</b>                | DIMM1 slot does not recognize a memory module. The module should be re-seated or installed.   |
| <b>Keyboard failure</b>   | A cable or connector may be loose, or the keyboard or keyboard/mouse controller may be faulty.  |
| <b>Memory address line failure at address, read value expecting value</b> | A memory module may be faulty or improperly seated. Reinstall the memory modules and, if necessary, replace them.   |
| <b>Memory allocation error</b>  | The software you are attempting to run is conflicting with the operating system, another program, or a utility.   |

| <b>Error Message</b>   | <b>Description</b>   |
|--|--|
| <b>Memory data line failure at address, read value expecting value</b>         | A memory module may be faulty or improperly seated. Reinstall the memory modules and, if necessary, replace them.  |
| <b>Memory double word logic failure at address, read value expecting value</b> | A memory module may be faulty or improperly seated. Reinstall the memory modules and, if necessary, replace them.  |
| <b>Memory odd/even logic failure at address, read value expecting value</b>    | A memory module may be faulty or improperly seated. Reinstall the memory modules and, if necessary, replace them.  |
| <b>Memory write/read failure at address, read value expecting value</b>        | A memory module may be faulty or improperly seated. Reinstall the memory modules and, if necessary, replace them.  |
| <b>Memory size in CMOS invalid</b>   | The amount of memory recorded in the computer configuration information does not match the memory installed in the computer.   |
| <b>Memory tests terminated by keystroke</b>                                    | A keystroke interrupted the memory test.   |
| <b>No boot device available</b>  | The computer cannot find the floppy disk or hard drive.  |
| <b>No boot sector on hard-disk drive</b>                                       | The computer configuration information in System Setup may be incorrect.   |
| <b>No timer tick interrupt</b>   | A chip on the system board might be malfunctioning.  |
| <b>Non-system disk or disk error</b>   | The floppy disk in drive A does not have a bootable operating system installed on it. Either replace the floppy disk with one that has a bootable operating system, or remove the floppy disk from drive A and restart the computer. |
| <b>Not a boot diskette</b>   | The operating system is trying to boot to a floppy disk that does not have a bootable operating system installed on it. Insert a bootable floppy disk.   |
| <b>Plug and play configuration error</b>                                       | The computer encountered a problem while trying to configure one or more cards.  |
| <b>Read fault</b>  | The operating system cannot read from the floppy or hard drive, the computer could not find a particular sector on the disk, or the requested sector is defective.   |
| <b>Requested sector not found</b>  | The operating system cannot read from the floppy or hard drive, the computer could not find a particular sector on the disk, or the requested sector is defective.   |
| <b>Reset failed</b>  | The disk re-set operation failed.  |
| <b>Sector not found</b>  | The operating system cannot locate a sector on the floppy or hard drive.   |
| <b>Seek error</b>  | The operating system cannot find a specific track on the floppy disk or hard drive.  |

| <b>Error Message</b>   | <b>Description</b>   |
|--|--|
| <b>Shutdown failure</b>  | A chip on the system board might be malfunctioning.  |
| <b>Time-of-day clock stopped</b>   | The battery might be dead.   |
| <b>Time-of-day not set-please run the System Setup program</b>   | The time or date stored in System Setup does not match the computer clock.   |
| <b>Timer chip counter 2 failed</b>   | A chip on the system board may be malfunctioning.  |
| <b>Unexpected interrupt in protected mode</b>  | The keyboard controller may be malfunctioning or a memory module may be loose.   |
| <b>WARNING: Dell's Disk Monitoring System has detected that drive [0/1] on the [primary/secondary] EIDE controller is operating outside of normal specifications. It is advisable to immediately back up your data and replace your hard drive by calling your support desk or Dell.</b> | During initial startup, the drive detected possible error conditions. When your computer finishes booting, immediately back up your data and replace your hard drive (for installation procedures, see "Adding and Removing Parts" for your computer type). If no replacement drive is immediately available and the drive is not the only bootable drive, enter System Setup and change the appropriate drive setting to <b>None</b> . Then remove the drive from the computer. |
| <b>Write fault</b>   | The operating system cannot write to the floppy or hard drive.   |
| <b>Write fault on selected drive</b>   | The operating system cannot write to the floppy or hard drive.   |

# Specifications

 **NOTE:** Offerings may vary by region. For more information regarding the configuration of your computer, click Start  (Start icon) → **Help and Support**, and then select the option to view information about your computer.

**Table 15. Processor**

| Feature        | Specification  |
|----------------|--|
| Processor type | <ul style="list-style-type: none"> <li>• Intel Core i3 series</li> <li>• Intel Core i5 series</li> <li>• Intel Core i7 series</li> <li>• Intel Xeon E3-1200 v3 series</li> </ul> |
| Total Cache    | Up to 8 MB cache depending on processor type   |

**Table 16. Memory**

| Feature        | Specification        |
|----------------|----------------------|
| Type           | DDR3, NECC, and ECC  |
| Speed          | 1600 MHz             |
| Connectors     | four DIMM slots      |
| Capacity       | 2 GB, 4 GB, and 8 GB |
| Minimum Memory | 2 GB                 |
| Maximum memory | 32 GB                |

**Table 17. Video**

| Feature    | Specification  |
|------------|--|
| Integrated | <ul style="list-style-type: none"> <li>• Intel HD Graphics 4600 (Core i5/i7)</li> <li>• Intel HD Graphics P4600 (select Intel Xeon)</li> </ul> |
| Discrete   | PCI Express x16 graphics adapter   |

**Table 18. Audio**

| Feature    | Specification                     |
|------------|-----------------------------------|
| Integrated | two Channel High Definition Audio |

**Table 19. Network**

| Feature    | Specification   |
|------------|---|
| Integrated | Intel I217LM Ethernet capable of 10/100/1000 Mb/s communication |

**Table 20. System Information**

| Feature           | Specification   |
|-------------------|---|
| System chipset    | Intel C226 chipset  |
| DMA Channels      | two 8237 DMA controllers with seven independently programmable channels |
| Interrupt Levels  | Integrated I/O APIC capability with 24 interrupts                       |
| BIOS Chip (NVRAM) | 12 MB   |

**Table 21. Expansion Bus**

| Feature   | Specification  |
|-----------|--|
| Bus Type  | PCIe gen2, gen3 (x16), USB 2.0, and USB 3.0  |
| Bus Speed | PCI Express: <ul style="list-style-type: none"> <li>• x1-slot each direction speed – 500 MB/s</li> <li>• x16-slot each direction speed – 16 GB/s</li> </ul> SATA: 1.5 Gbps, 3.0 Gbps, and 6 Gbps |

**Table 22. Cards**

| Feature           | Specification               |
|-------------------|-----------------------------|
| PCI:              |                             |
| Mini-Tower        | up to one full-height card  |
| Small Form Factor | none                        |
| PCI Express x1:   |                             |
| Mini-Tower        | up to one full-height card  |
| Small Form Factor | none                        |
| PCI-Express x16:  |                             |
| Mini-Tower        | up to two full-height cards |
| Small Form Factor | up to two low-profile cards |

**Table 23. Drives**

| Feature                                      | Specification |
|--|---------------|
| Externally Accessible (5.25-inch drive bay): |               |
| Mini-Tower                                   | two           |





| <b>Feature</b>                | <b>Specification</b>                                       |
|-------------------------------|--|
| Mini-Tower, Small Form Factor | one 164-pin connector                                      |
| Serial ATA:                   |  |
| Mini-Tower                    | four 7-pin connectors                                      |
| Small Form Factor             | three 7-pin connectors                                     |
| Memory                        | four 240-pin connectors                                    |
| Internal USB:                 |  |
| Mini-Tower                    | one 10-pin connector                                       |
| Small Form Factor             | none   |
| System Fan                    | one 5-pin connector  |
| Front panel control:          |  |
| Mini-Tower                    | one 6-pin and two 20-pin connector                         |
| Small Form Factor             | one 6-pin, one 10-pin, one 12-pin and one 20-pin connector |
| Mini-Tower – Thermal Sensor   | one 2-pin connector  |
| Processor                     | one 1150-pin connector                                     |
| Processor Fan                 | one 5-pin connector  |
| Service mode jumper           | one 2-pin connector  |
| Password clear jumper         | one 2-pin connector  |
| RTC reset jumper              | one 2-pin connector  |
| Internal speaker              | one 5-pin connector  |
| Intruder connector            | one 3-pin connector  |
| Power connector:              | one 8-pin, one 4-pin, one 6-pin, connector                 |


**Table 26. Controls and Lights**

| <b>Feature</b>                                     | <b>Specification</b>  |
|--|---|
| Front of the computer:                             |   |
| Power button light                                 | White light — Solid white light indicates power-on state; blinking white light indicates sleep state of the computer.   |
| Drive activity light                               | White light — Blinking white light indicates that the computer is reading data from or writing data to the hard drive.  |
| Back of the computer:                              |   |
| Link integrity light on integrated network adapter | Green — a good 10 Mbps connection exists between the network and the computer.<br><br>Green — a good 100 Mbps connection exists between the network and the computer. |

| Feature  | Specification  |
|--|--|
|  | Orange — a good 1000 Mbps connection exists between the network and the computer.  |
|  | Off (no light) — the computer is not detecting a physical connection to the network.   |
| Network activity light on integrated network adapter | Yellow light — A blinking yellow light indicates that network activity is present.   |
| Power supply diagnostic light                        | Green light — The power supply is turned on and is functional. The power cable must be connected to the power connector (at the back of the computer) and the electrical outlet. |

**Table 27. Power**


| Power             | Wattage          | Maximum Heat Dissipation | Voltage                                   |
|-------------------|------------------|--------------------------|---|
| Mini-Tower:       | 290 W            | 989.00 BTU/hr            | 100 VAC to 240 VAC, 50 Hz to 60 Hz, 5.4 A |
|                   | 365 W EPA        | 1245 BTU/hr              | 100 VAC to 240 VAC, 50 Hz to 60 Hz, 5.0 A |
| Small Form Factor | 255 W /255 W EPA | 870.00 BTU/hr            | 100 VAC to 240 VAC, 50 Hz to 60 Hz, 4.6 A |

 **NOTE:** Heat dissipation is calculated by using the power supply wattage rating.

Coin-cell battery 3 V CR2032 lithium coin cell

**Table 28. Physical Dimension**

| Physical          | Height                   | Width                   | Depth                    | Weight             |
|-------------------|--------------------------|-------------------------|--------------------------|--------------------|
| Mini-Tower        | 360.00 mm (14.17 inches) | 175.00 mm (6.89 inches) | 435.00 mm (17.13 inches) | 8.40 kg (18.52 lb) |
| Small Form Factor | 290.00 mm (11.42 inches) | 92.60 mm (3.65 inches)  | 312.00 mm (12.28 inches) | 5.30 kg (11.68 lb) |


 **NOTE:** The computer's weight is based on a typical configuration and may vary with different configurations.

**Table 29. Environmental**

| Feature                      | Specification                             |
|------------------------------|---|
| Temperature range:           |   |
| Operating                    | 5 °C to 35 °C (41 °F to 95 °F)            |
| Storage                      | -40 °C to 65 °C (-40 °F to 149 °F)        |
| Relative humidity (maximum): |   |
| Operating                    | 20 percent to 80 percent (non-condensing) |


| <b>Feature</b>             | <b>Specification</b>                           |
|----------------------------|--|
| Storage                    | 5 percent to 95 percent (non-condensing)       |
| Maximum vibration:         |  |
| Operating                  | 0.26 GRMS                                      |
| Storage                    | 2.20 GRMS                                      |
| Maximum shock:             |  |
| Operating                  | 40 G   |
| Storage                    | 105 G  |
| Altitude:                  |  |
| Operating                  | -15.2 m to 3048 m (-50 to 10,000 ft)           |
| Storage                    | -15.20 m to 10,668 m (-50 ft to 35,000 ft)     |
| Airborne contaminant level | G1 or lower as defined by ANSI/ISA-S71.04-1985 |

## Contacting Dell

 **NOTE:** Dell provides several online and telephone-based support and service options. If you do not have an active Internet connection, you can find contact information on your purchase invoice, packing slip, bill, or Dell product catalog. Availability varies by country and product, and some services may not be available in your area.

To contact Dell for sales, technical support, or customer-service issues:

1. Go to **dell.com/contactdell**.
2. Select your country or region from the interactive world map.  
When you select a region, the countries for the selected regions are displayed.
3. Select the appropriate language under the country of your choice.
4. Select your business segment.  
The main support page for the selected business segment is displayed.
5. Select the appropriate option depending on your requirement.

 **NOTE:** If you have purchased a Dell system, you may be asked for the Service Tag.