

APPENDIX A

RULES AND REGULATIONS

DEFINITIONS (100 Series)

HIGH PRIORITY HABITAT means habitat areas identified by Colorado Parks and Wildlife where measures to Avoid, Minimize, and Mitigate Adverse Impacts to wildlife have been identified to protect breeding, nesting, foraging, migrating, or other uses by wildlife. Maps showing, and spatial data identifying, the individual and combined extents of the High Priority Habitats will be provided by CPW and attached to this Rule as Appendix VII. The Commission will provide the maps on its website. The extent of these High Priority Habitat areas is subject to update on a periodic but no more frequent than annual basis and will be modified only through the Commission's rulemaking process described in Rule 529. Notice of such rulemaking proceeding will be provided by ~~January 15~~ [February 28](#) of each year.

Proposed Map Revisions

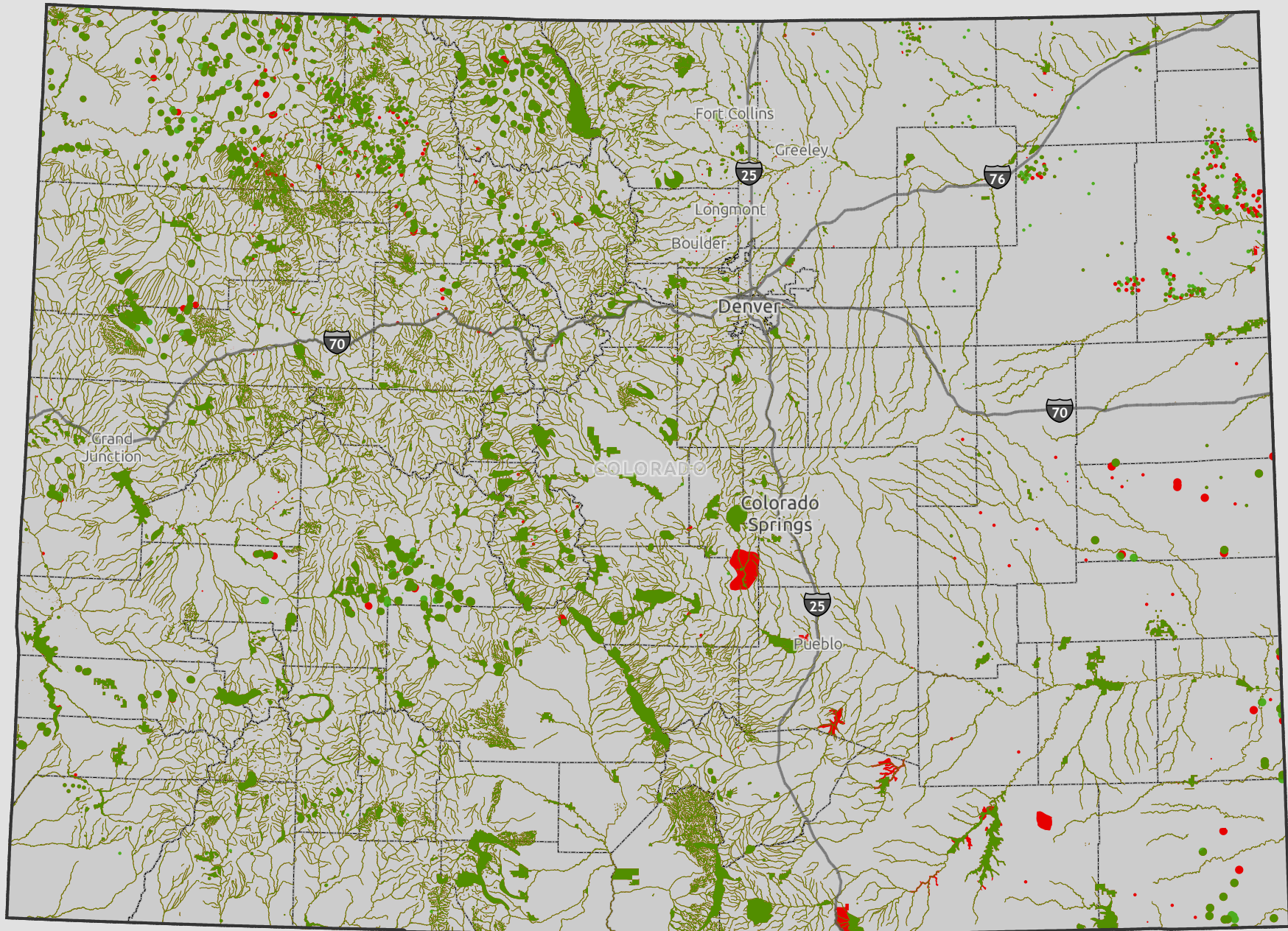
Rule 1202.c Map #1


The Rule 1202.c map labeled #1, shows in red the proposed changes to Rule 1202.c High Priority Habitats from 2021 to 2022.


All High Priority Habitats Map #2

The map labeled #2, shows in red the proposed changes to all High Priority Habitats from 2021 to 2022.

Rule 1202.c Map #1



 1202C - 2021

 1202C - 2022

High Priority Habitat Maps 12/31/2021

The buffer distances as stated in the COGCC Rules are not precisely scaled as symbolized on this statewide map and are provided for representational and reference purposes only.

Note: For an interactive map, please refer to the COGCC GIS Online map tool at: <https://cogcc.state.co.us/maps.html#/gisonline>; for up to date source maps and data, contact CPW

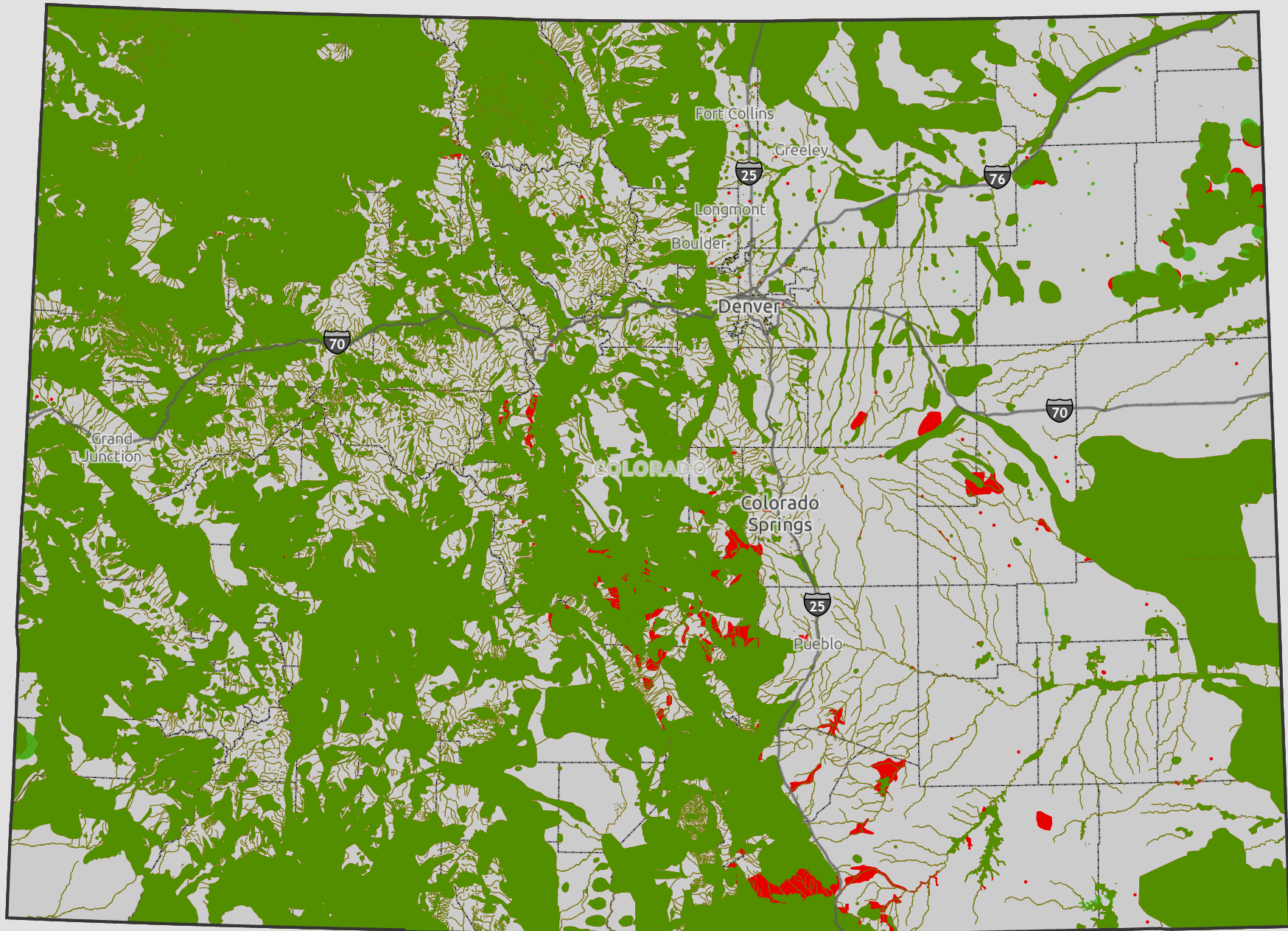


This product is produced and distributed by:
Colorado Parks & Wildlife, GIS Section
6060 Broadway Denver, CO 80216.

Information depicted hereon is for reference purposes only and is compiled from best available sources. Reasonable efforts have been made to ensure the accuracy of this map. Colorado Parks & Wildlife expressly disclaims responsibility for damages or liability that may arise from the use of this map.

All High Priority Habitats

Map #2



All - 2021



All - 2022

High Priority Habitat Maps 12/31/2021

Note: For an interactive map, please refer to the COGCC GIS Online map tool at:
<https://cogcc.state.co.us/maps.html#/gisonline;>
 for up to date source maps and data, contact CPW

The buffer distances as stated in the COGCC Rules are not precisely scaled as symbolized on this statewide map and are provided for representational and reference purposes only.



This product is produced and distributed by:
 Colorado Parks & Wildlife, GIS Section
 6060 Broadway Denver, CO 80216.

Information depicted hereon is for reference purposes only and is compiled from best available sources. Reasonable efforts have been made to ensure the accuracy of this map. Colorado Parks & Wildlife expressly disclaims responsibility for damages or liability that may arise from the use of this map.