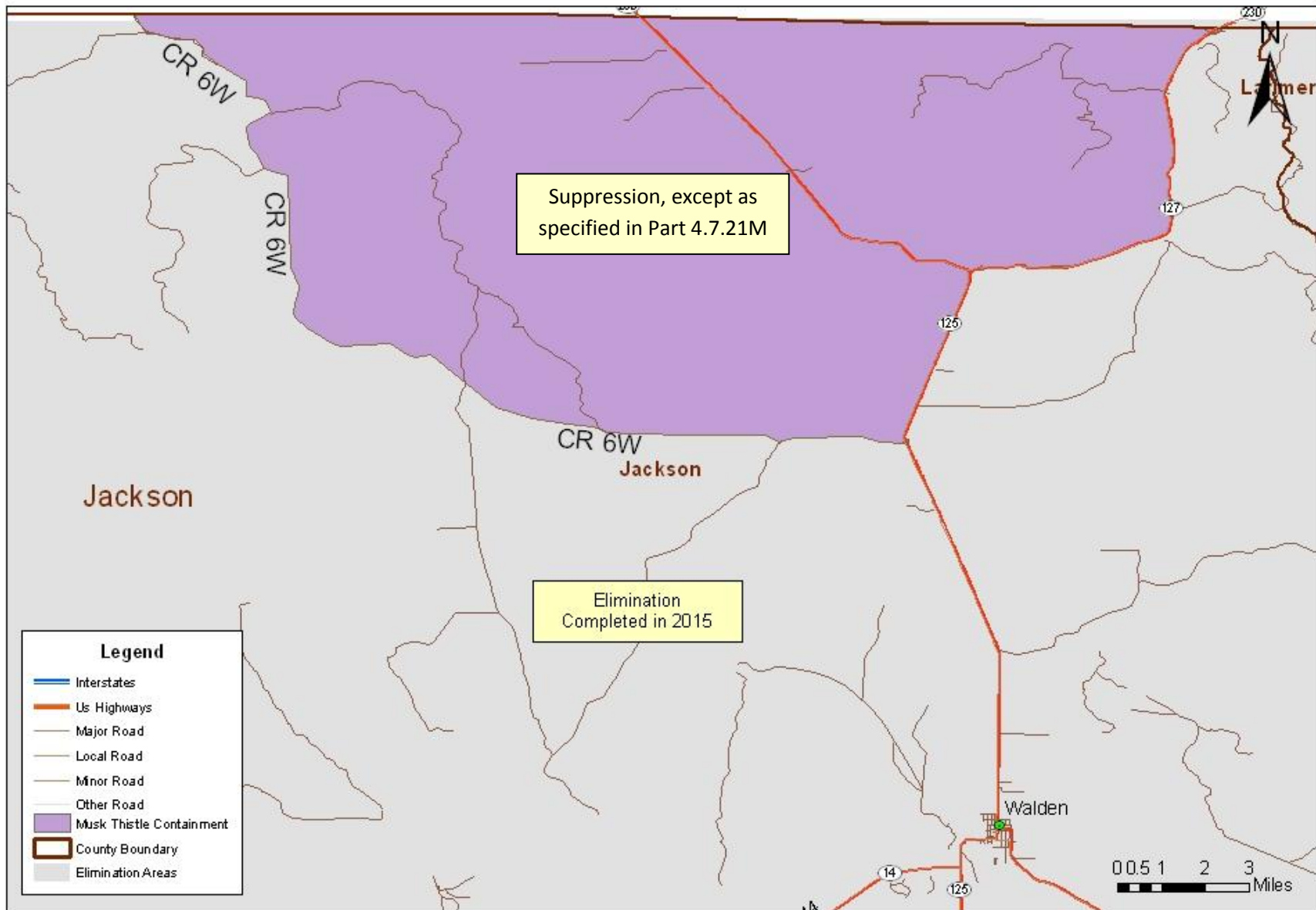


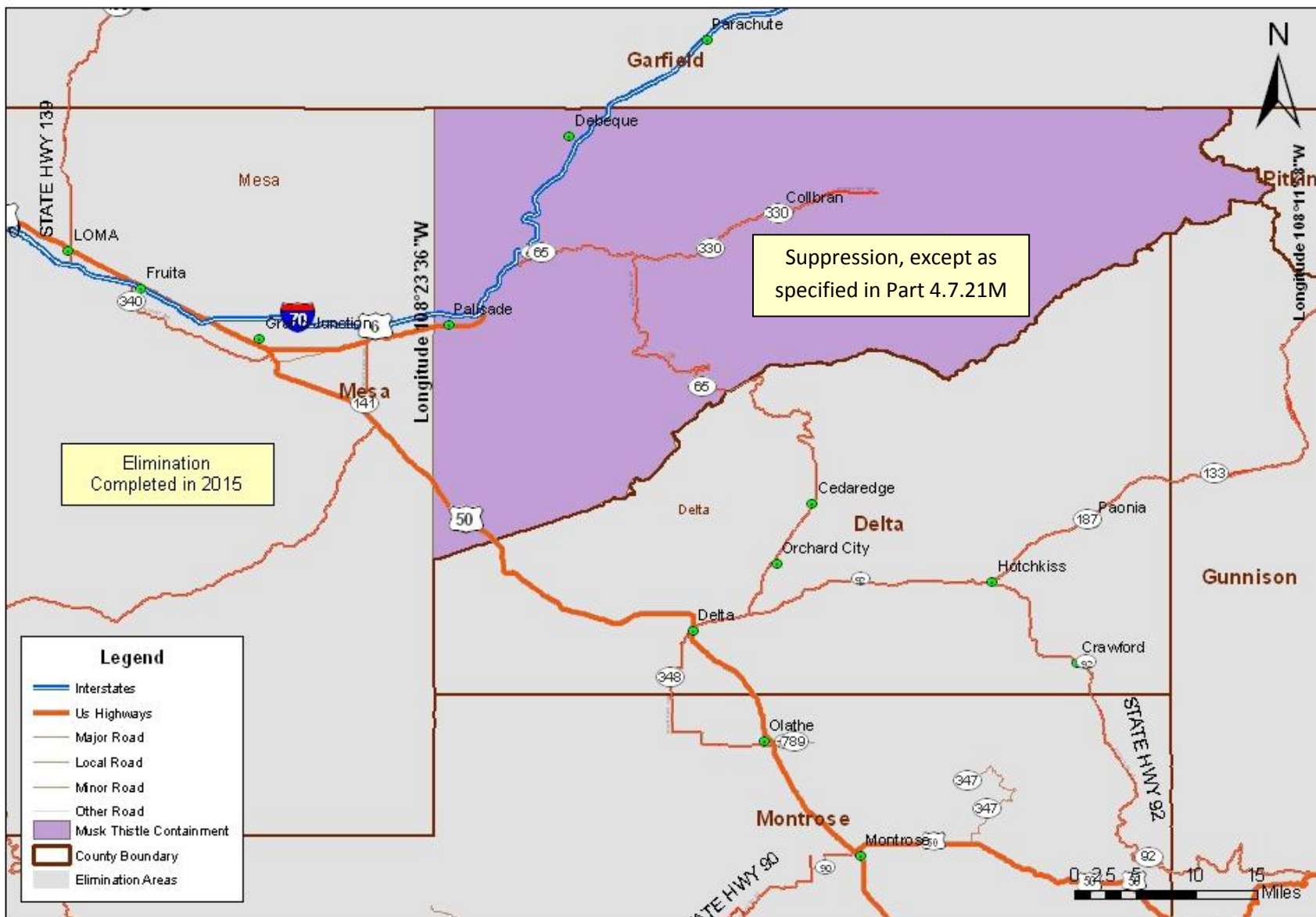
Musk thistle *Carduus nutans*
Jackson County

Figure 195



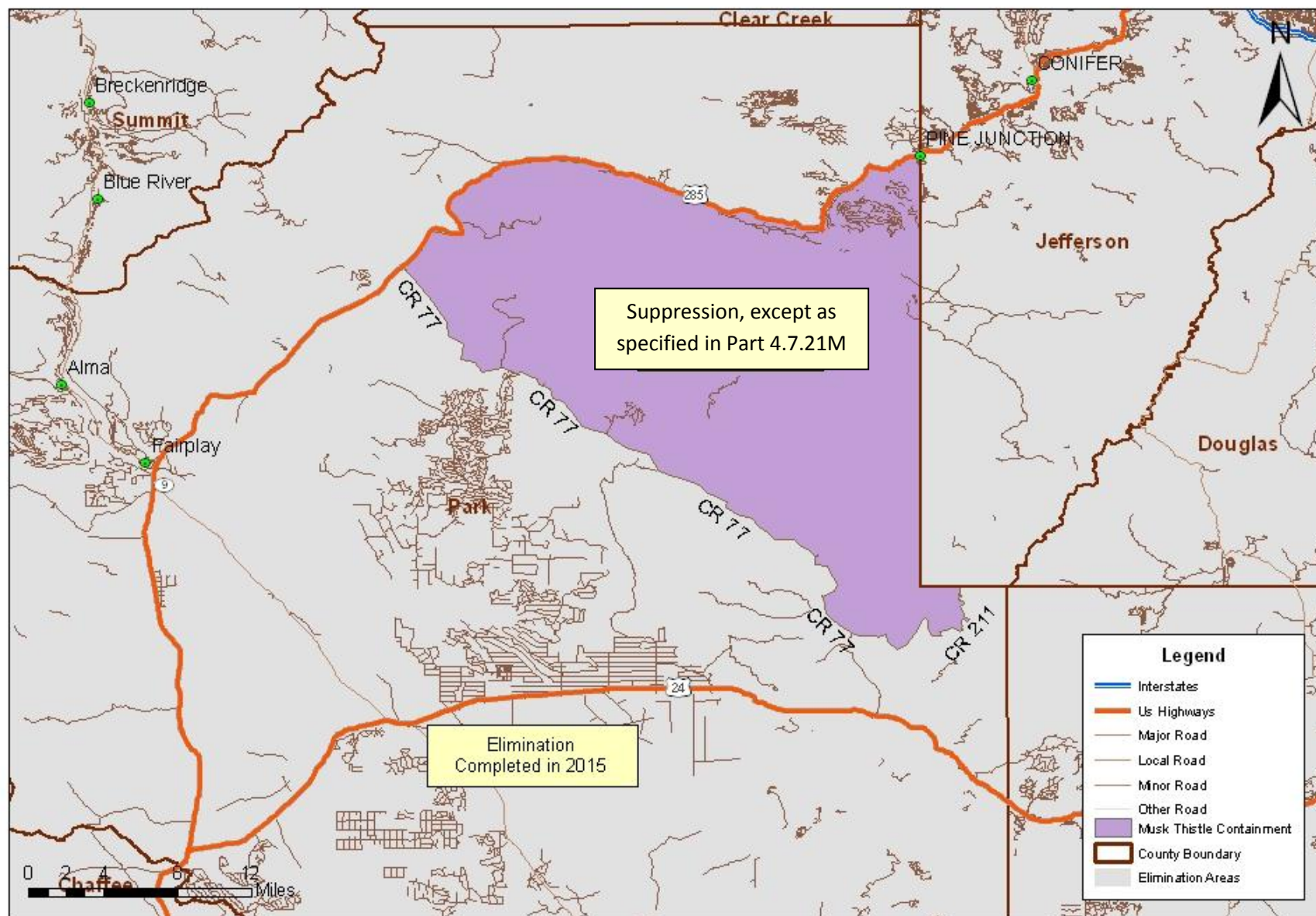
Musk thistle *Carduus nutans* Mesa County

Figure 196



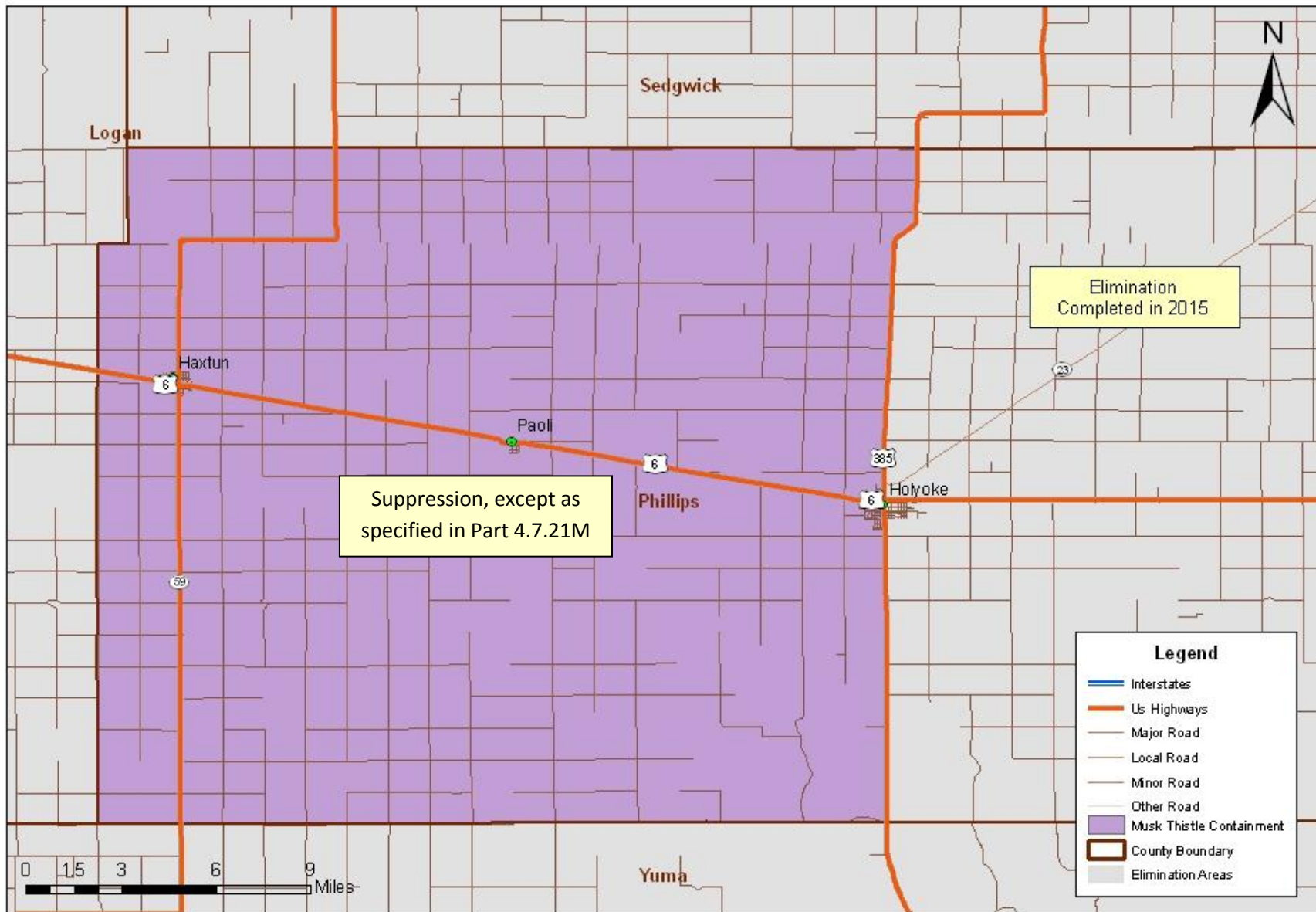
Musk thistle *Carduus nutans* Park County

Figure 198



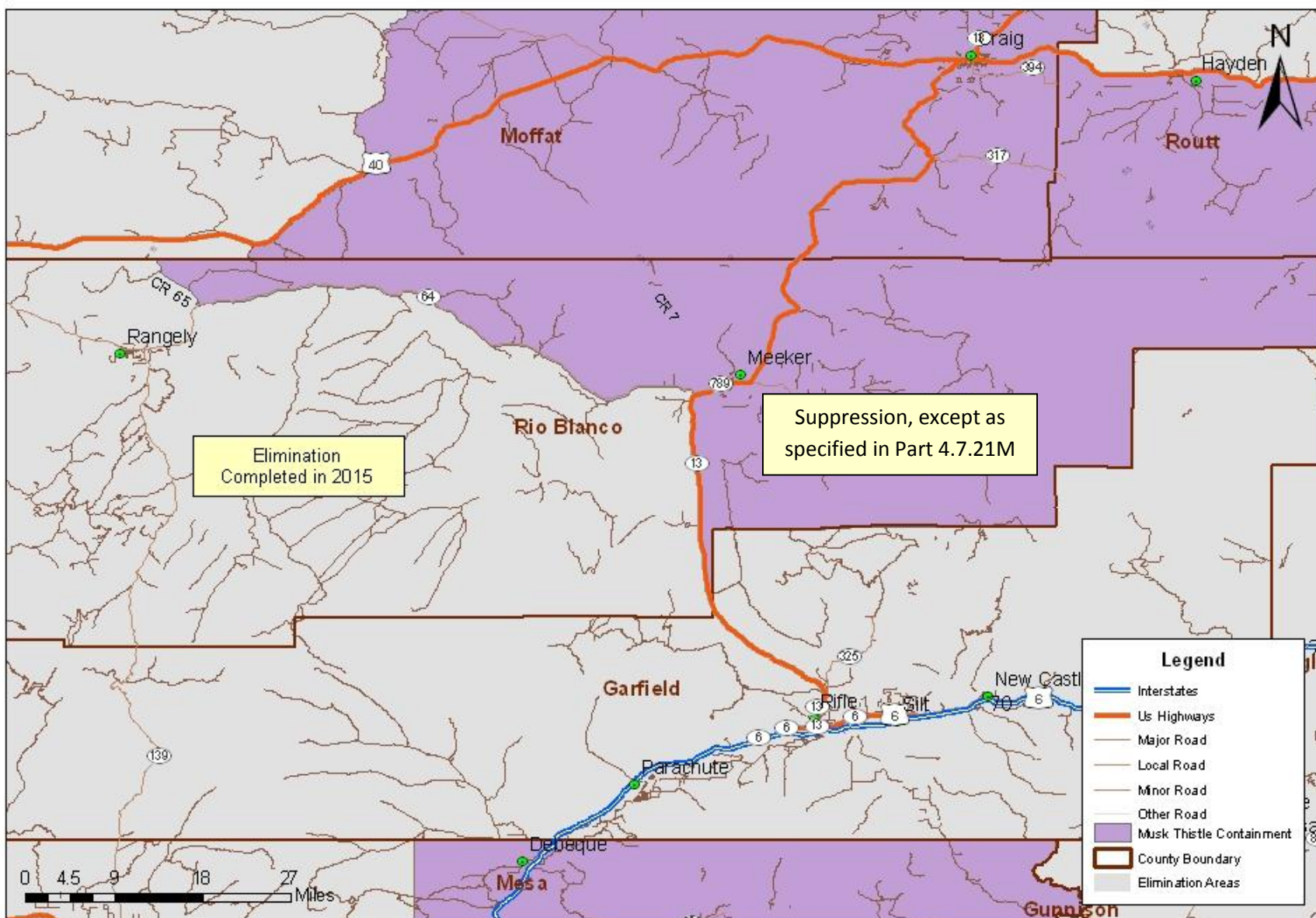
Musk thistle *Carduus nutans*
Phillips County

Figure 199



Musk thistle *Carduus nutans* Rio Blanco County

Figure 200



Musk thistle *Carduus nutans*
Sedgwick County

Figure 202

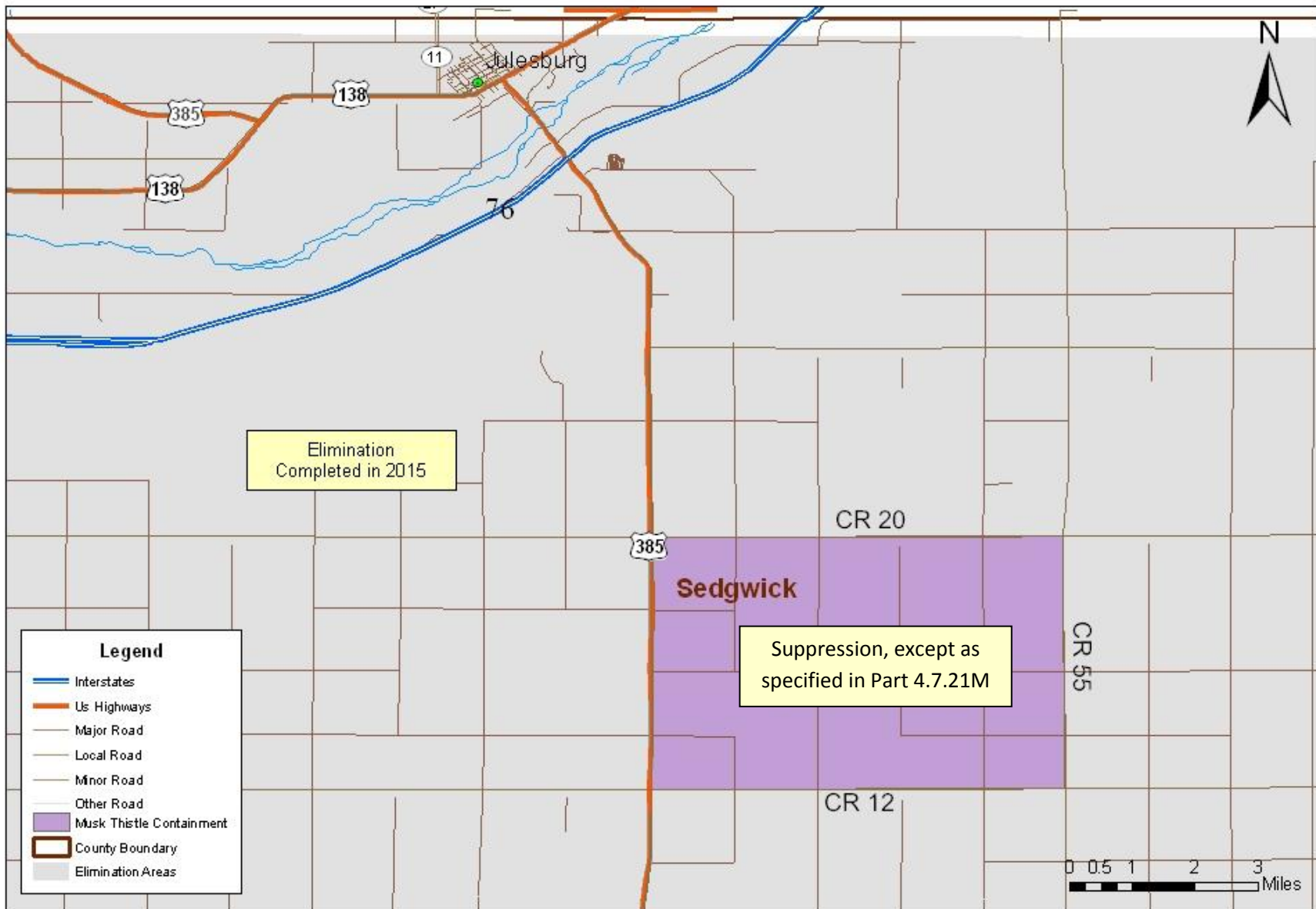


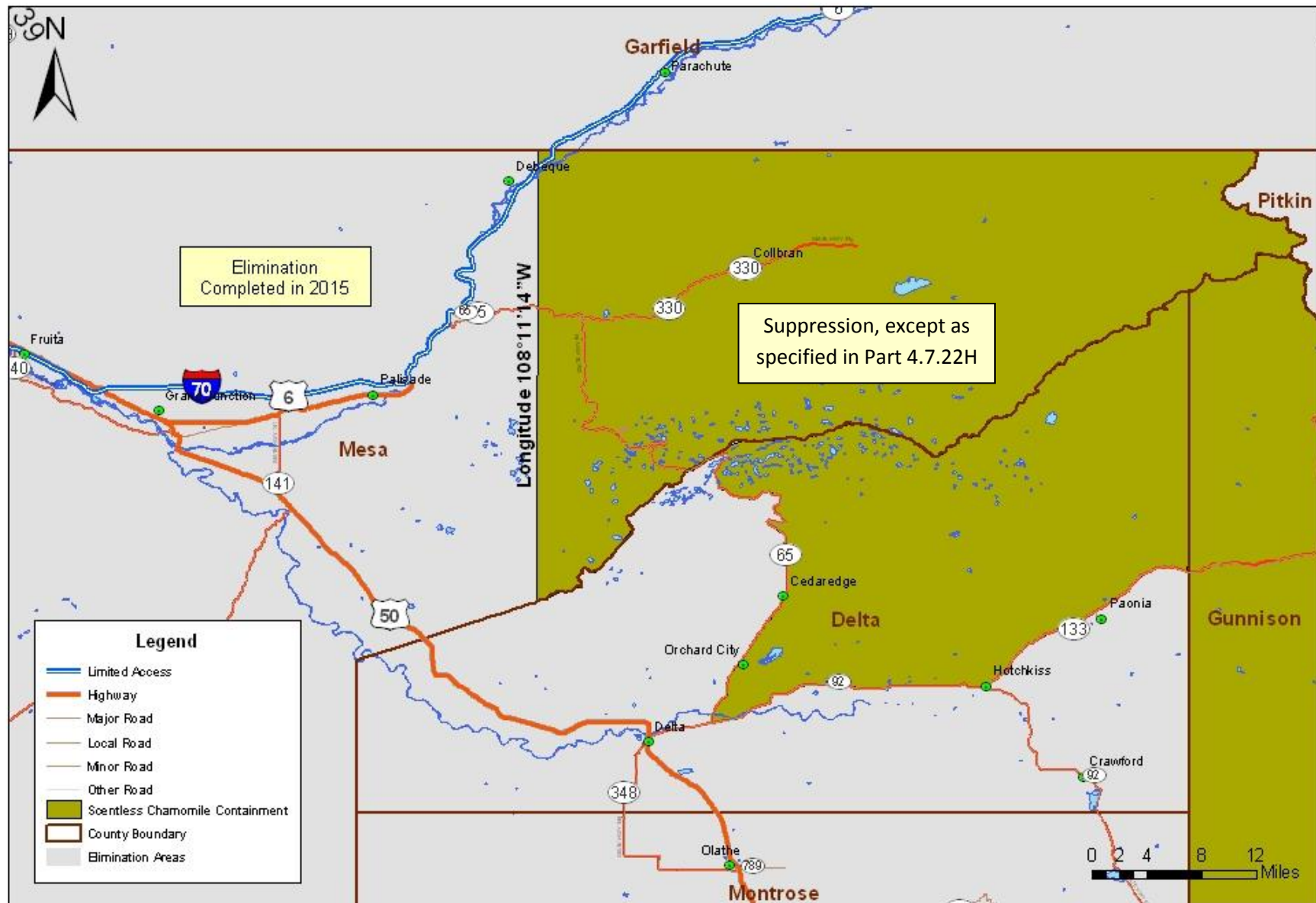
Figure 204

The map displays the Delta region in Colorado, highlighting areas for Scentless Chamomile suppression and elimination. The map includes a legend, a scale bar, and a north arrow. Key locations marked include Pelissade, Cedaredge, Orchard City, Delta, Olathe, Hotchkiss, Paonia, and Crawford. Highways shown include 6, 141, 50, 85, 330, 92, 133, 347, and 348. A yellow box indicates 'Suppression, except as specified in Part 4.7.22H' and another yellow box indicates 'Elimination Completed in'. The map also shows county boundaries for Mesa, Delta, Montrose, and Gunnison.

Scentless, Corn, and Mayweed Chamomile

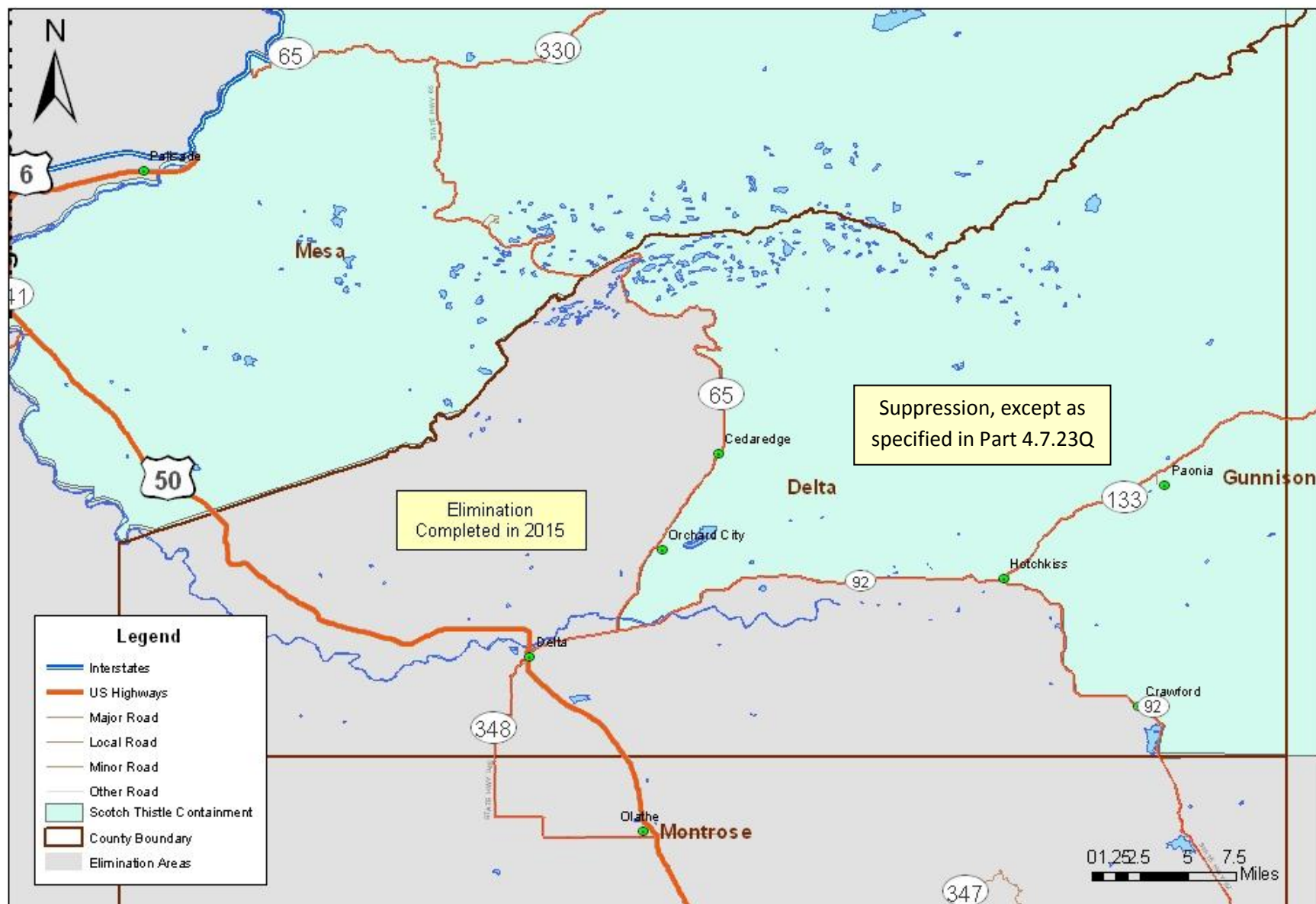
Figure 207

Mesa County (*Tripleurospermum perforatum*, *Anthemis arvensis*, and *A. cotula*)



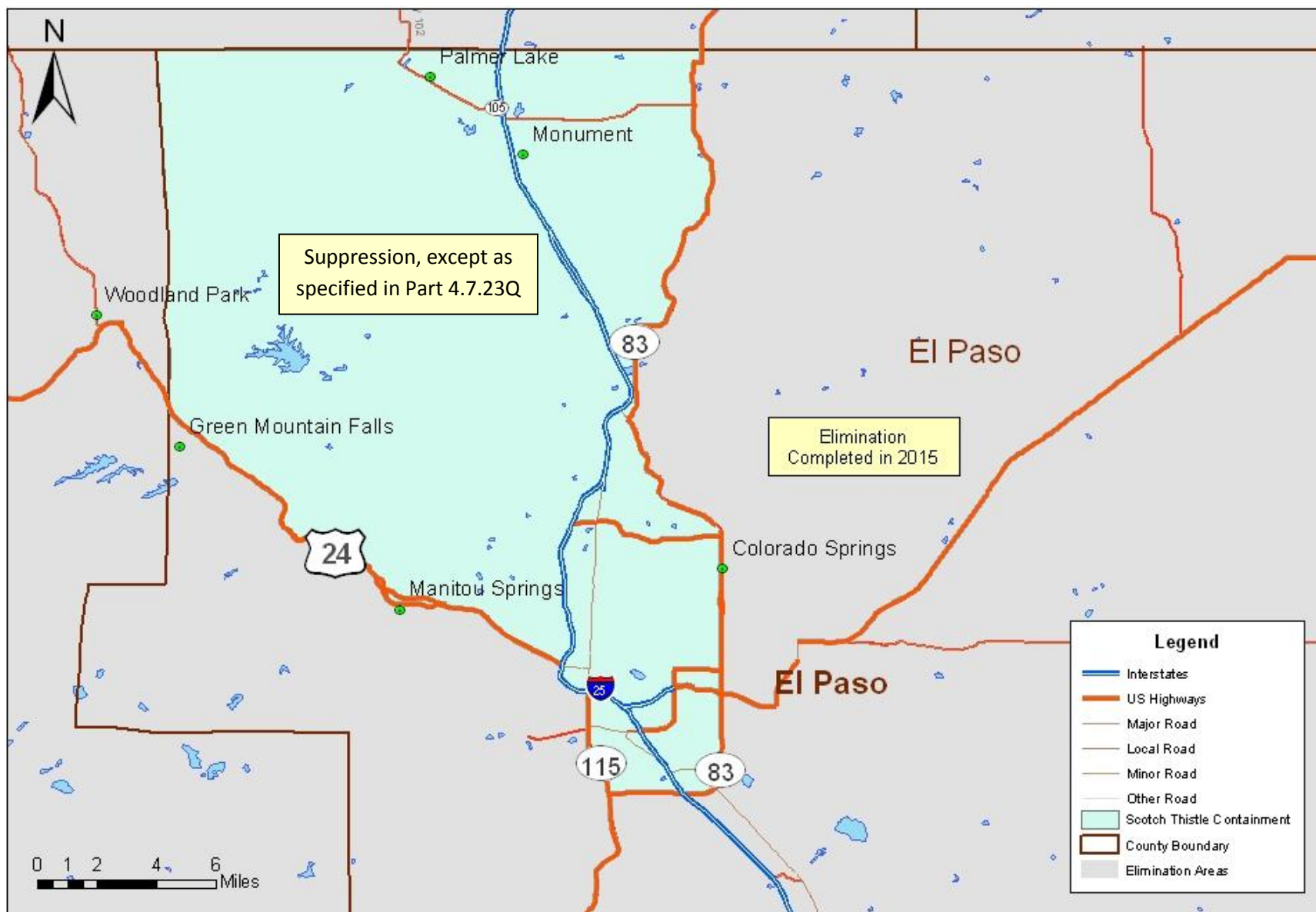
Scotch thistle *Onopordum acanthium* and *Onopordum tauricum*
Delta County

Figure 209



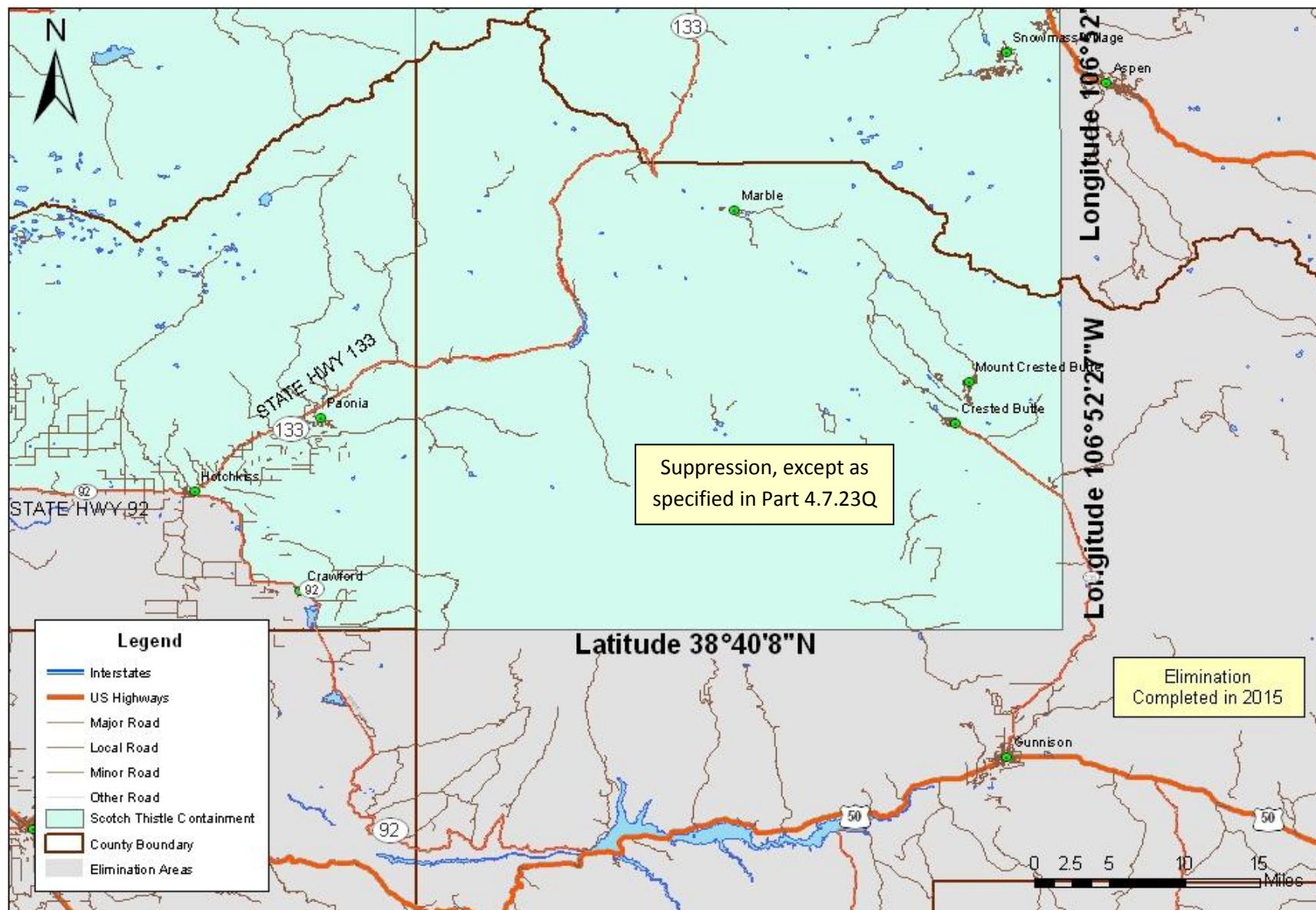
Scotch thistle *Onopordum acanthium* and *Onopordum tauricum*
El Paso County

Figure 210



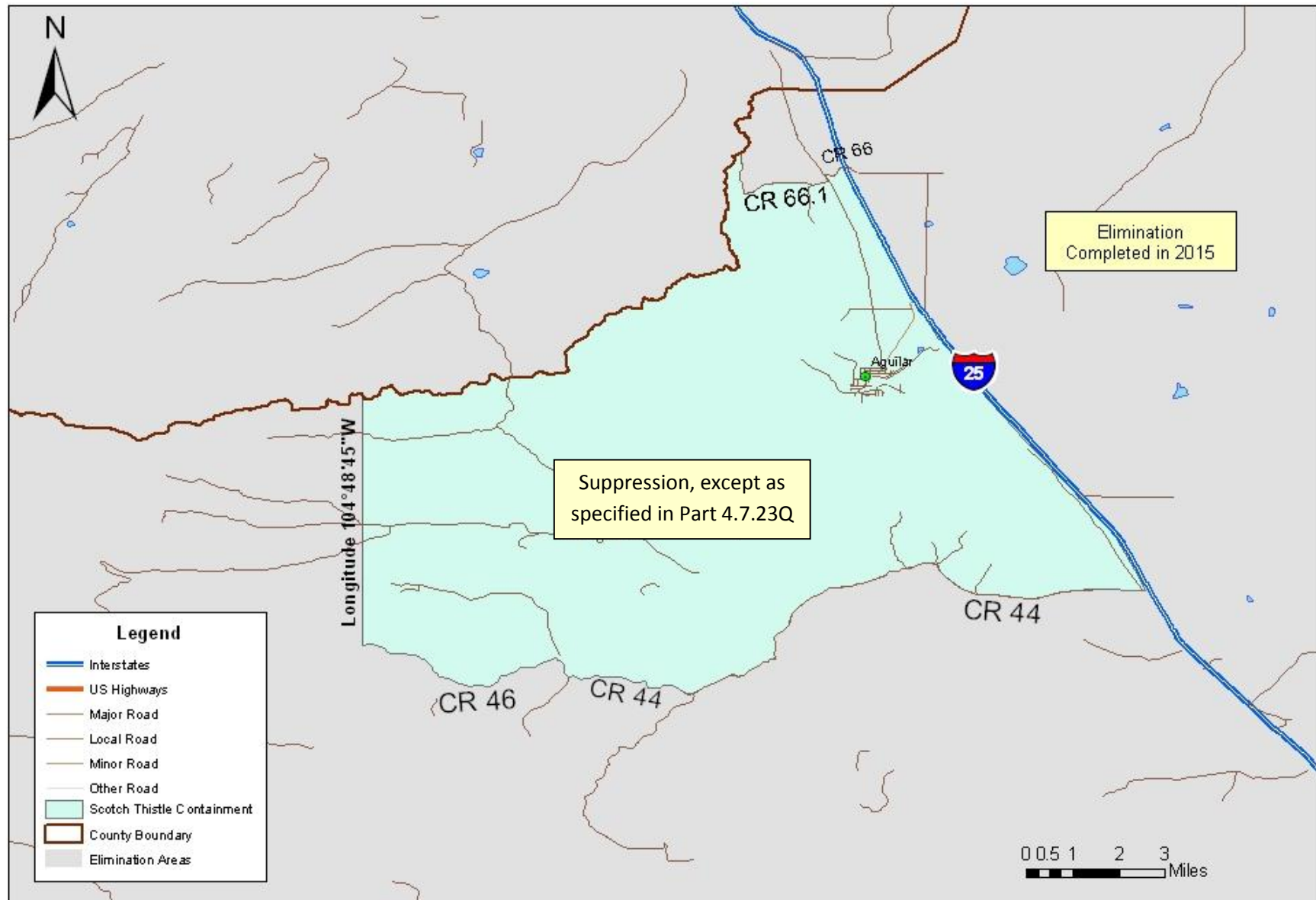
Scotch thistle *Onopordum acanthium* and *Onopordum tauricum*
Gunnison County

Figure 213



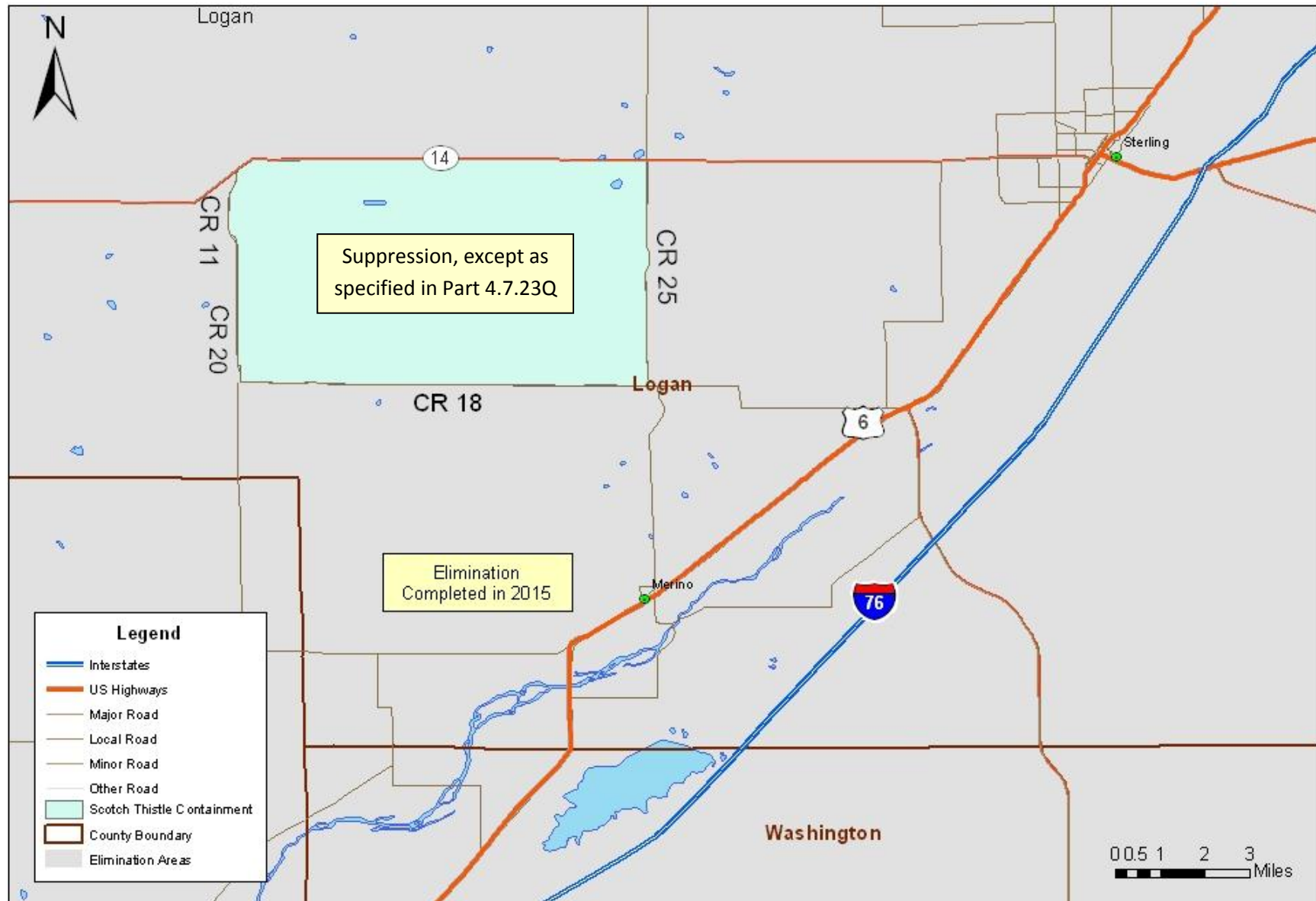
Scotch thistle *Onopordum acanthium* and *Onopordum tauricum*
Las Animas County

Figure 214



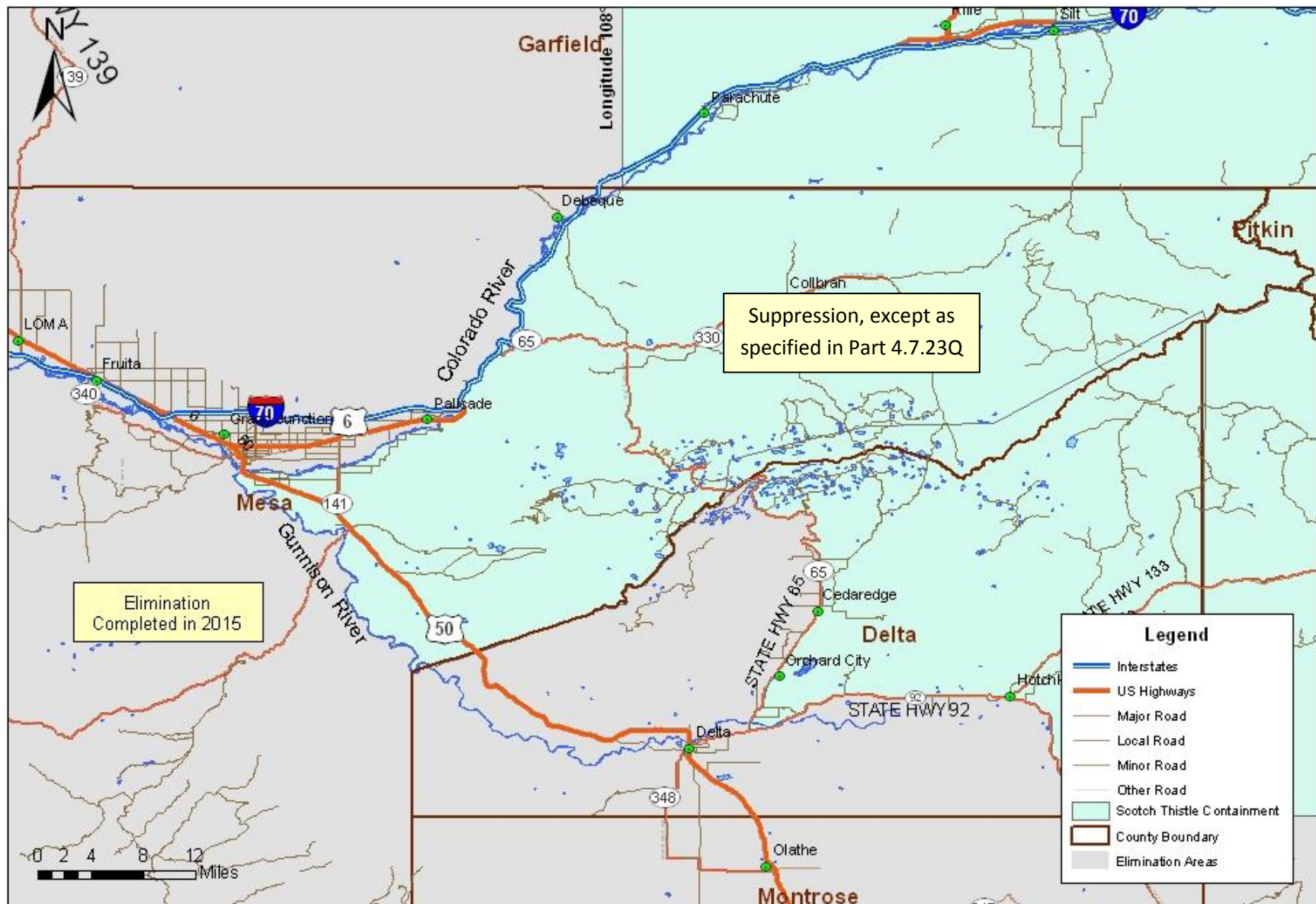
Scotch thistle *Onopordum acanthium* and *Onopordum tauricum*
Logan County

Figure 215



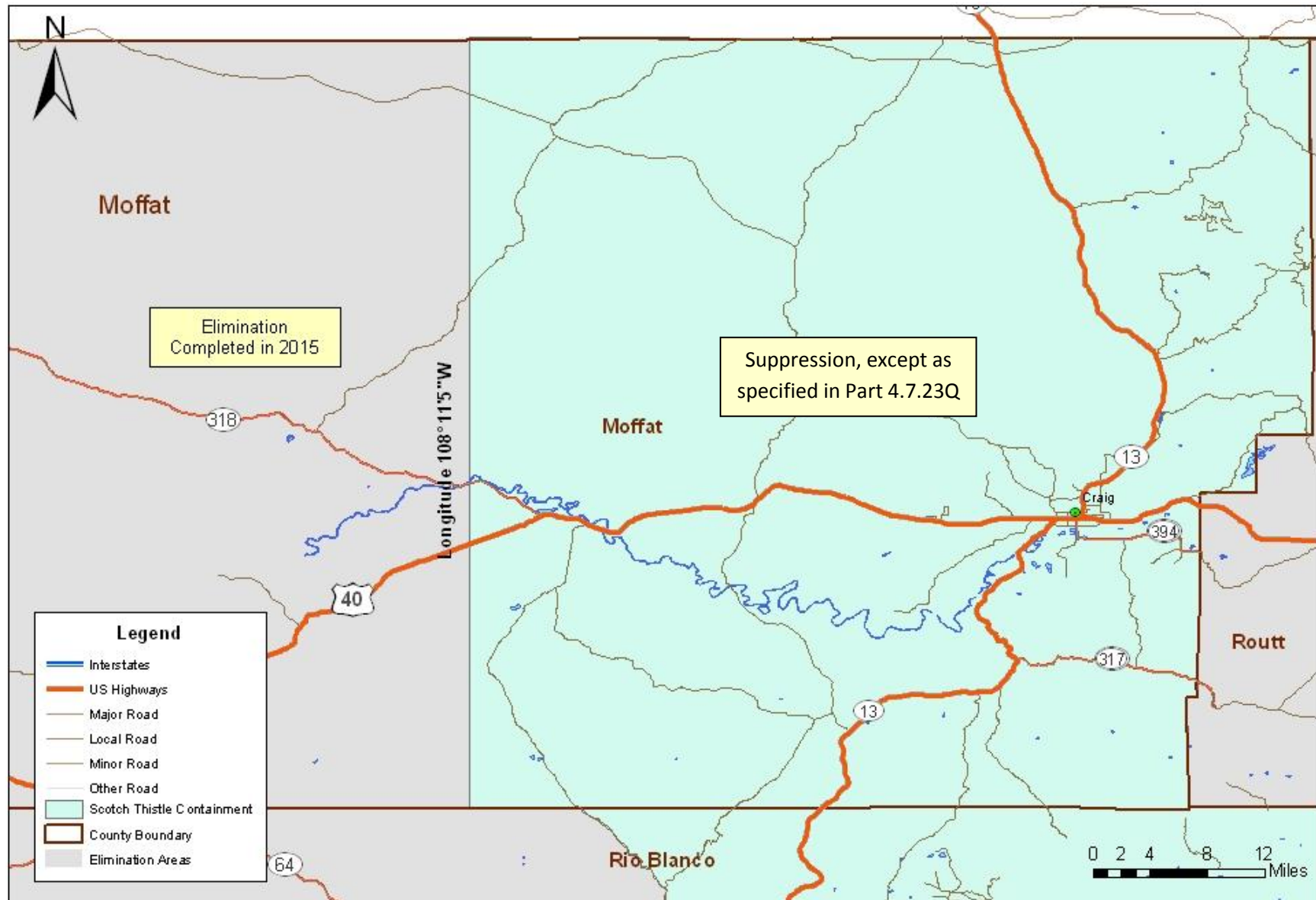
Scotch thistle *Onopordum acanthium* and *Onopordum tauricum* Mesa County

Figure 216



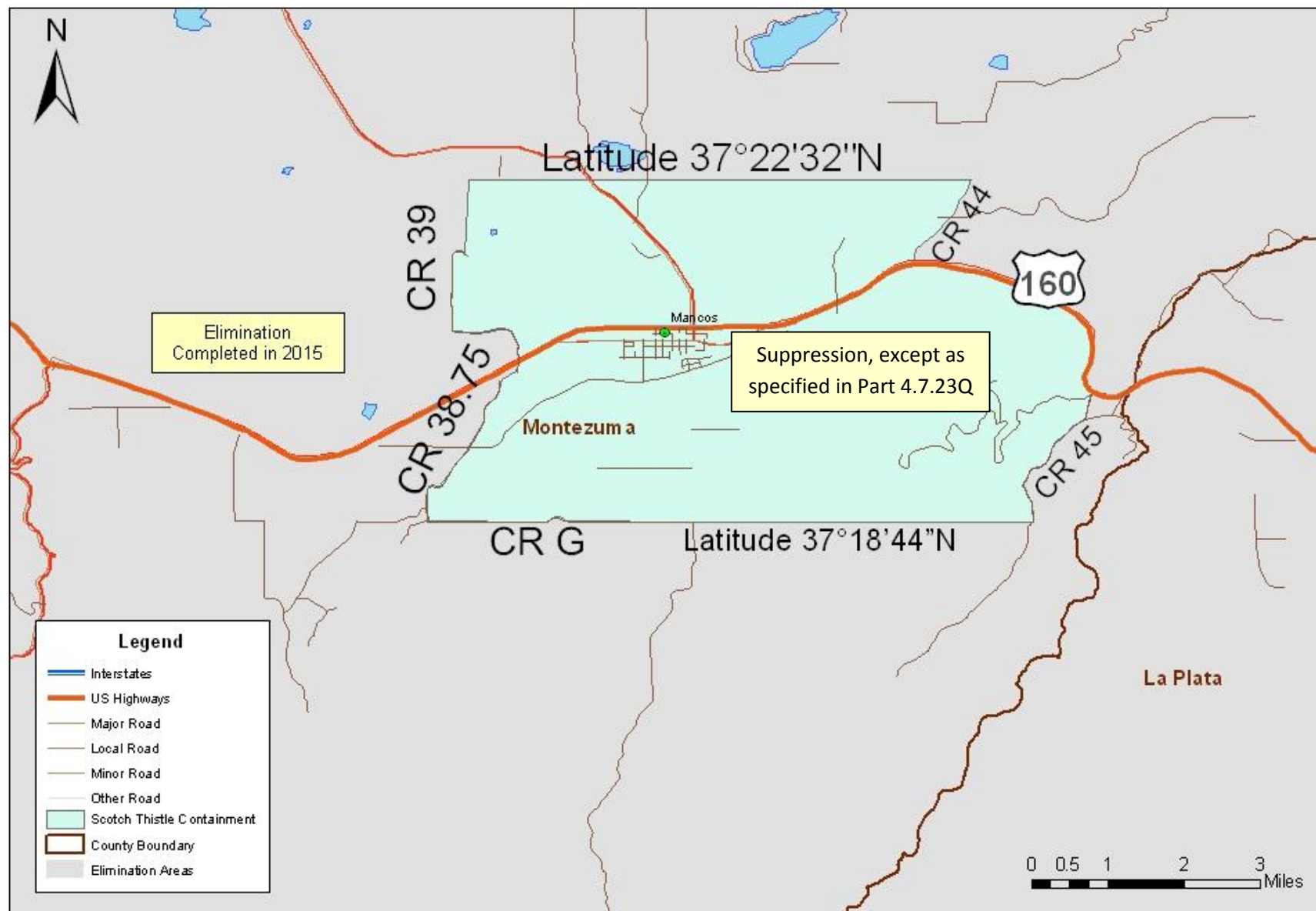
Scotch thistle *Onopordum acanthium* and *Onopordum tauricum*
Moffat County

Figure 217



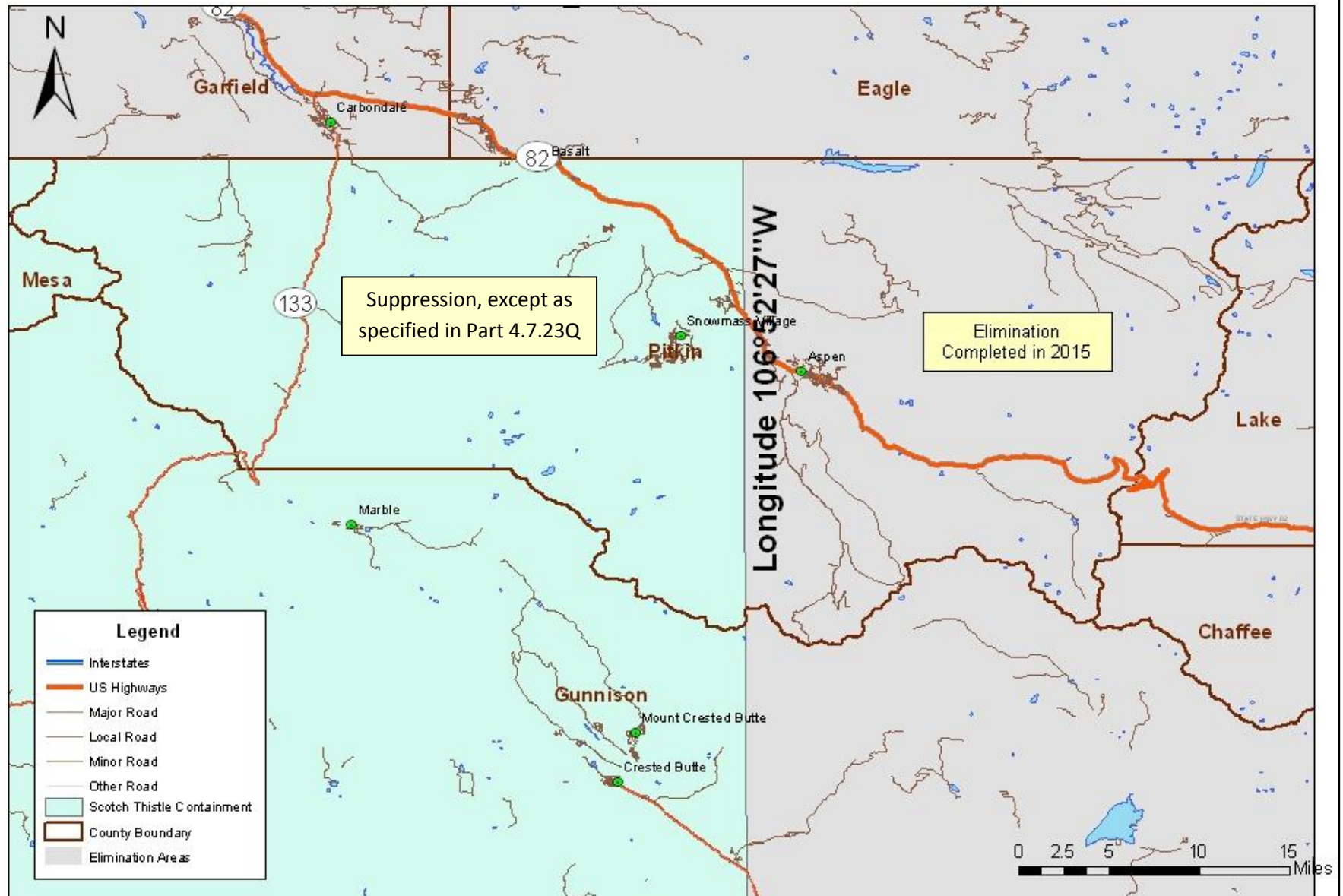
Scotch thistle *Onopordum acanthium* and *Onopordum tauricum*
Montezuma County

Figure 218



Scotch thistle *Onopordum acanthium* and *Onopordum tauricum*
 Pitkin County

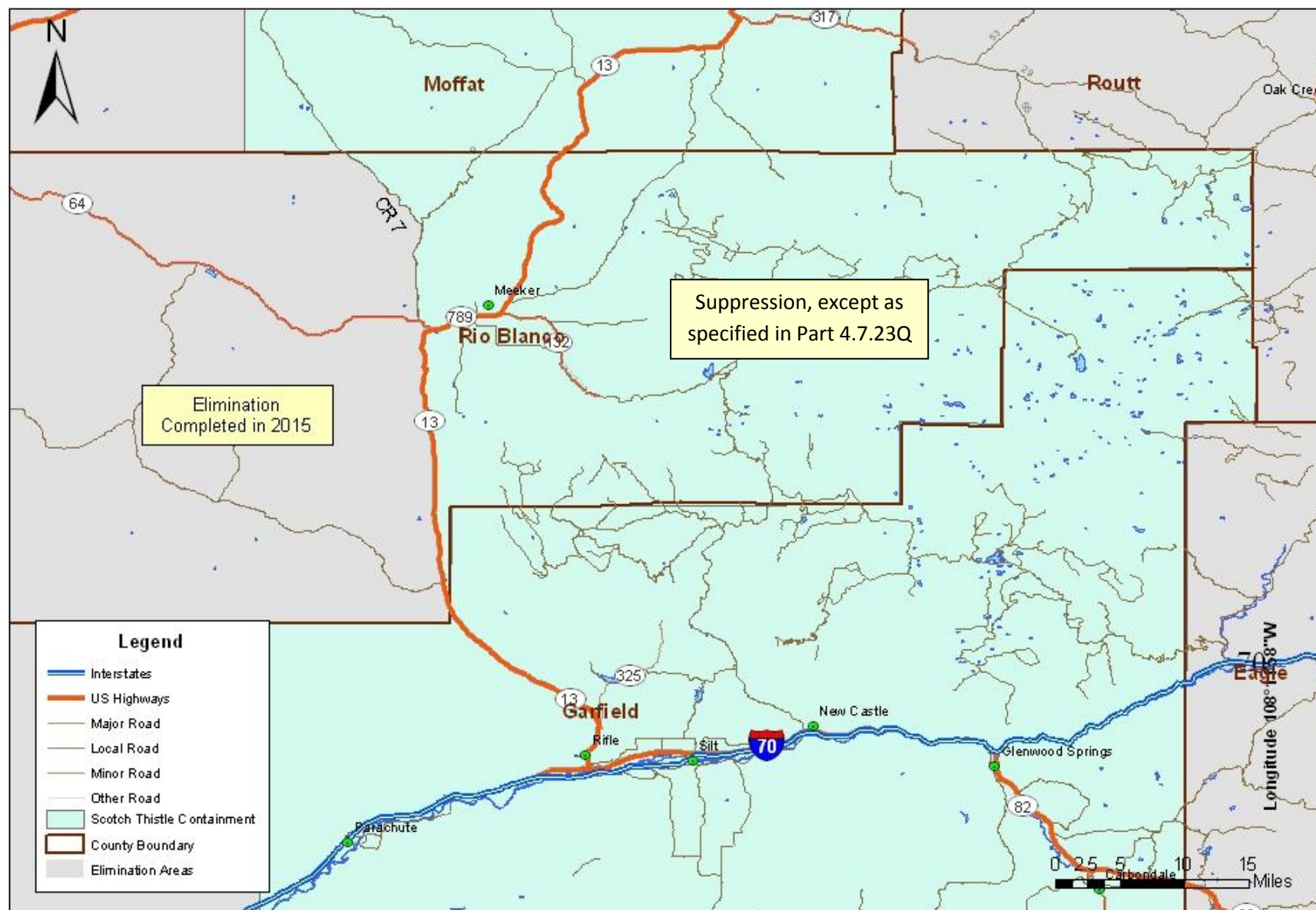
Figure 219



Scotch thistle *Onopordum acanthium* and *Onopordum tauricum*

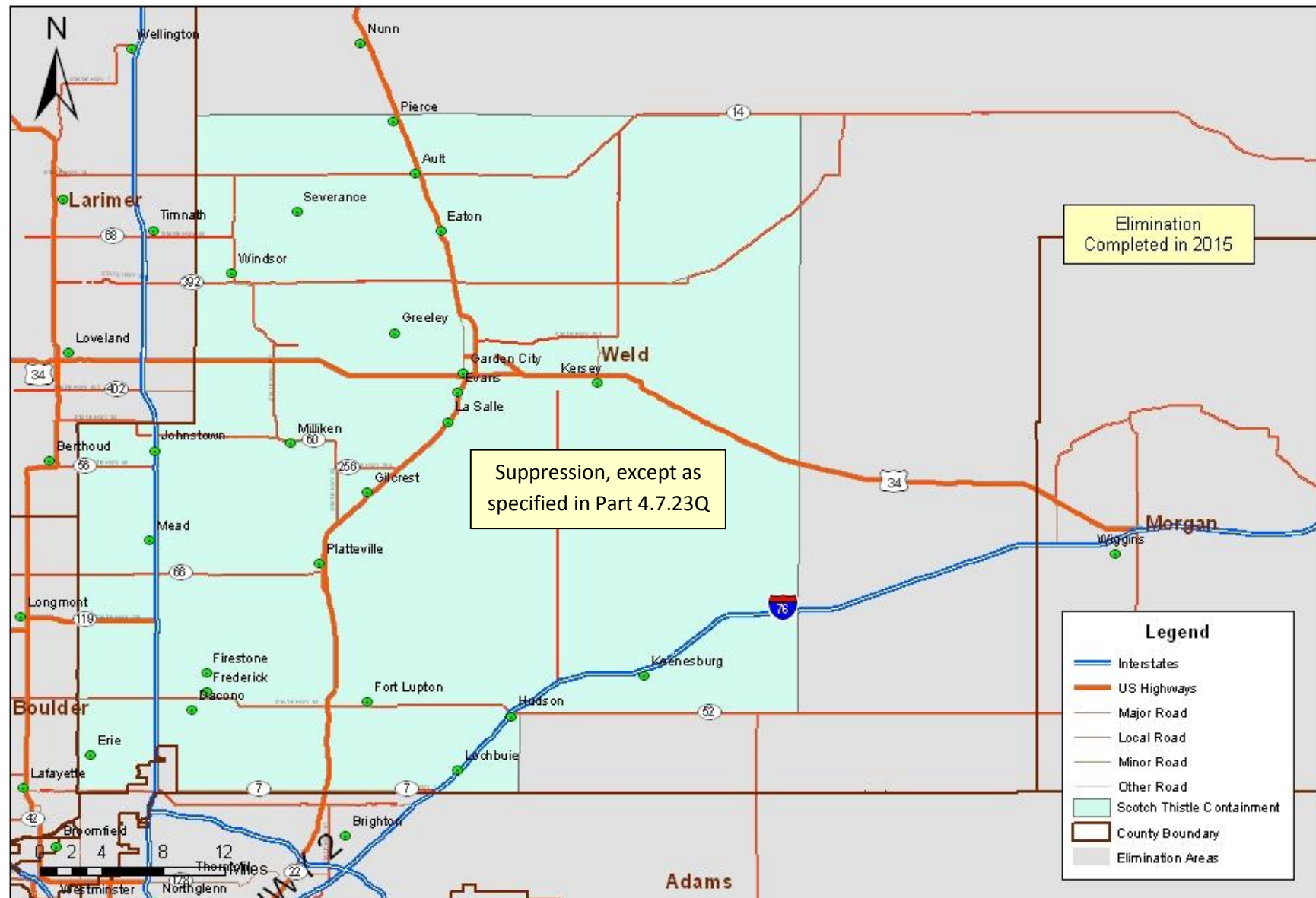
Rio Blanco County

Figure 221



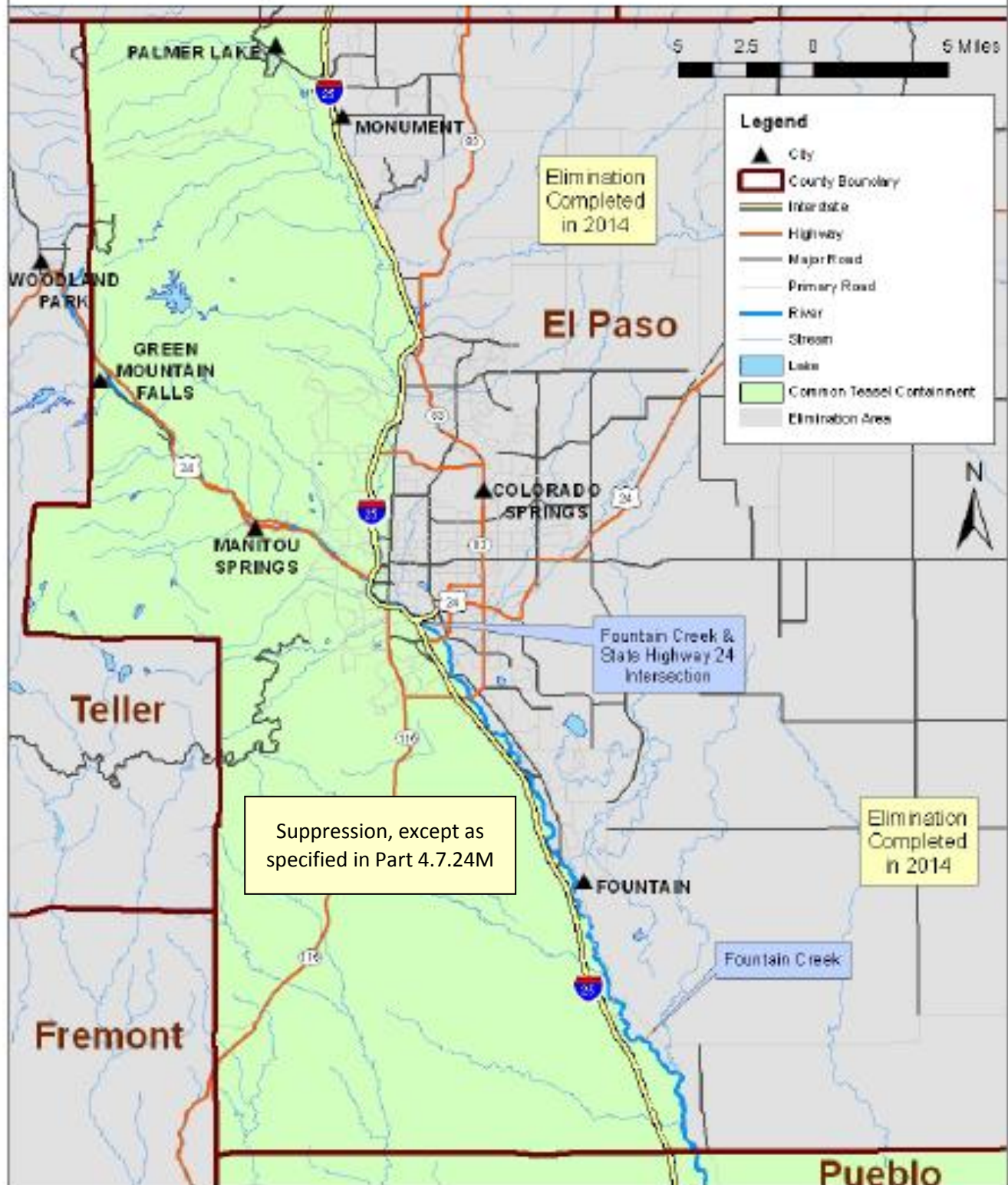
Scotch thistle *Onopordum acanthium* and *Onopordum tauricum* Weld County

Figure 222



Common Teasel *Dipsacus fullonum* El Paso County

Figure 227



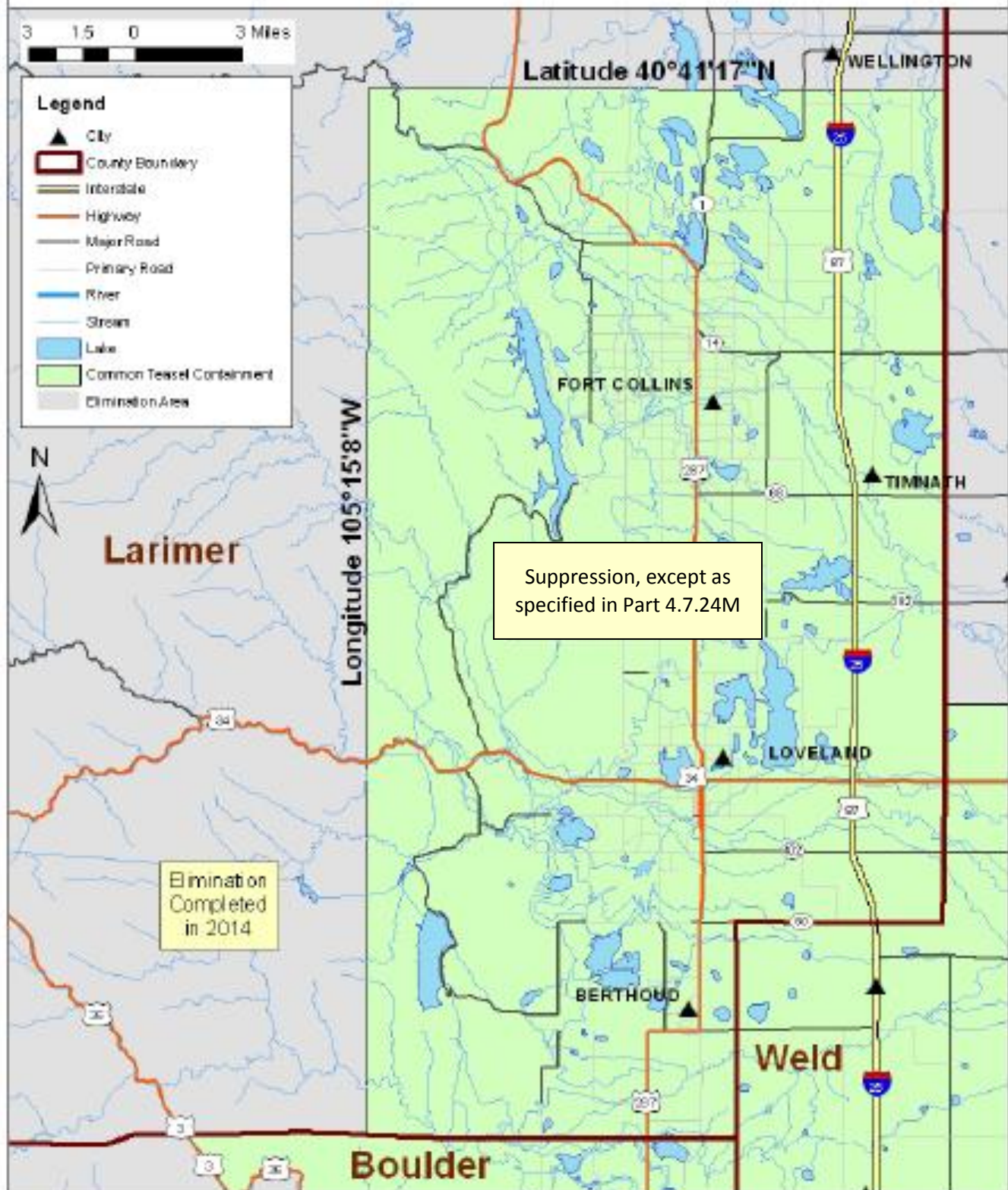
Common Teasel *Dipsacus fullonum* Jefferson County

Figure 228



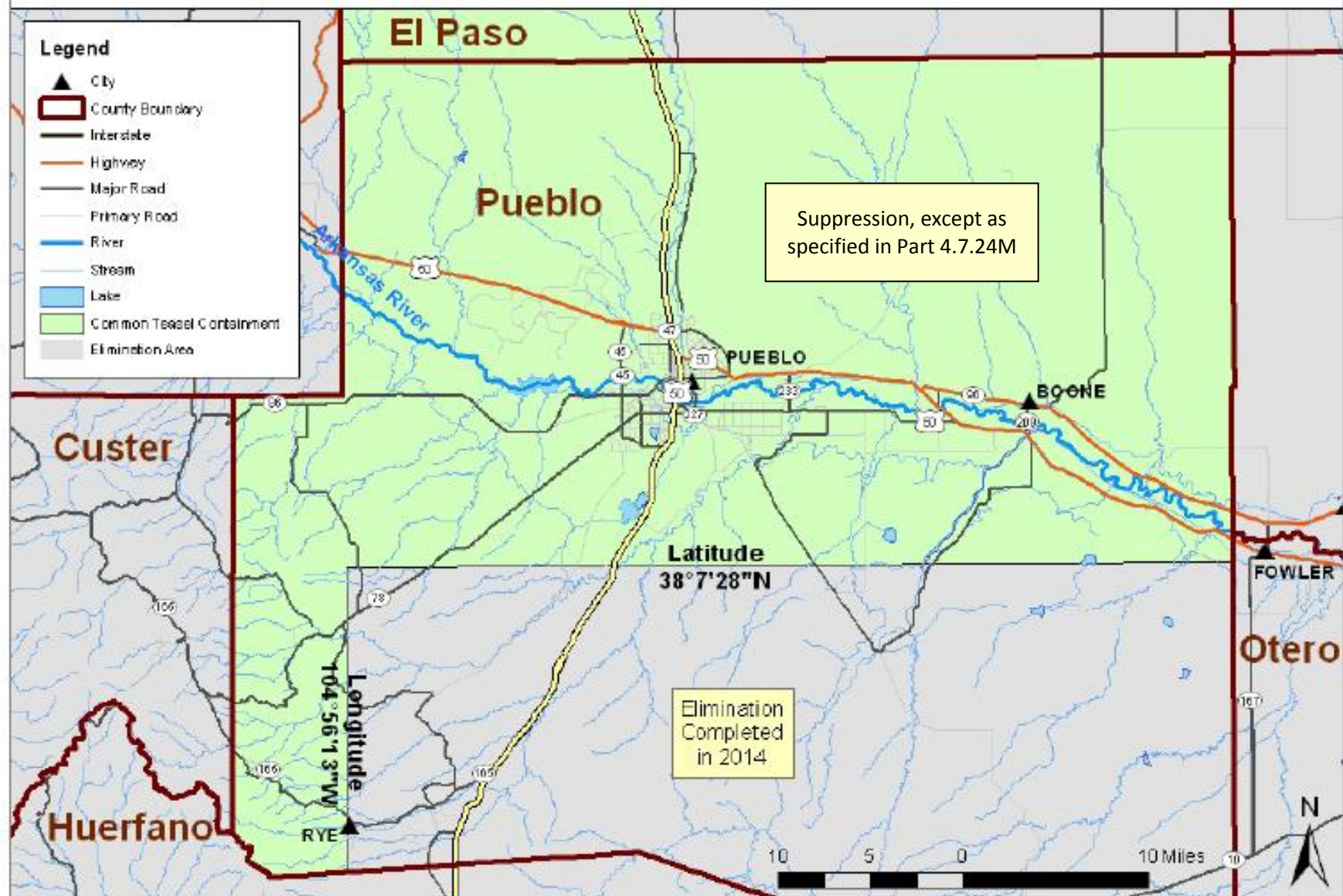
Common Teasel *Dipsacus fullonum* Larimer County

Figure 229



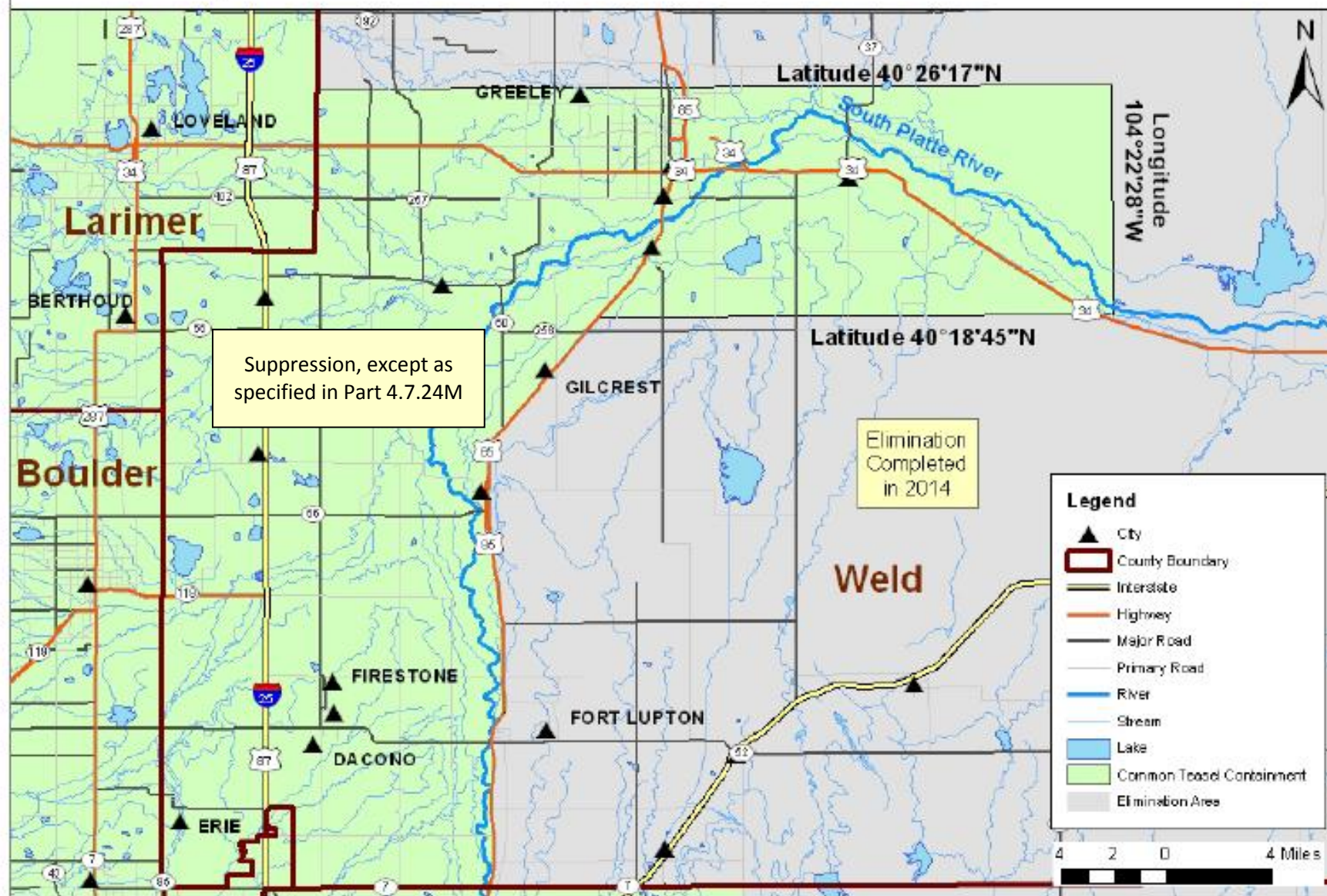
Common Teasel *Dipsacus fullonum* Pueblo County

Figure 231



Common Teasel *Dipsacus fullonum* Weld County

Figure 232



Cutleaf Teasel Jefferson County

Dipsacus laciniatus

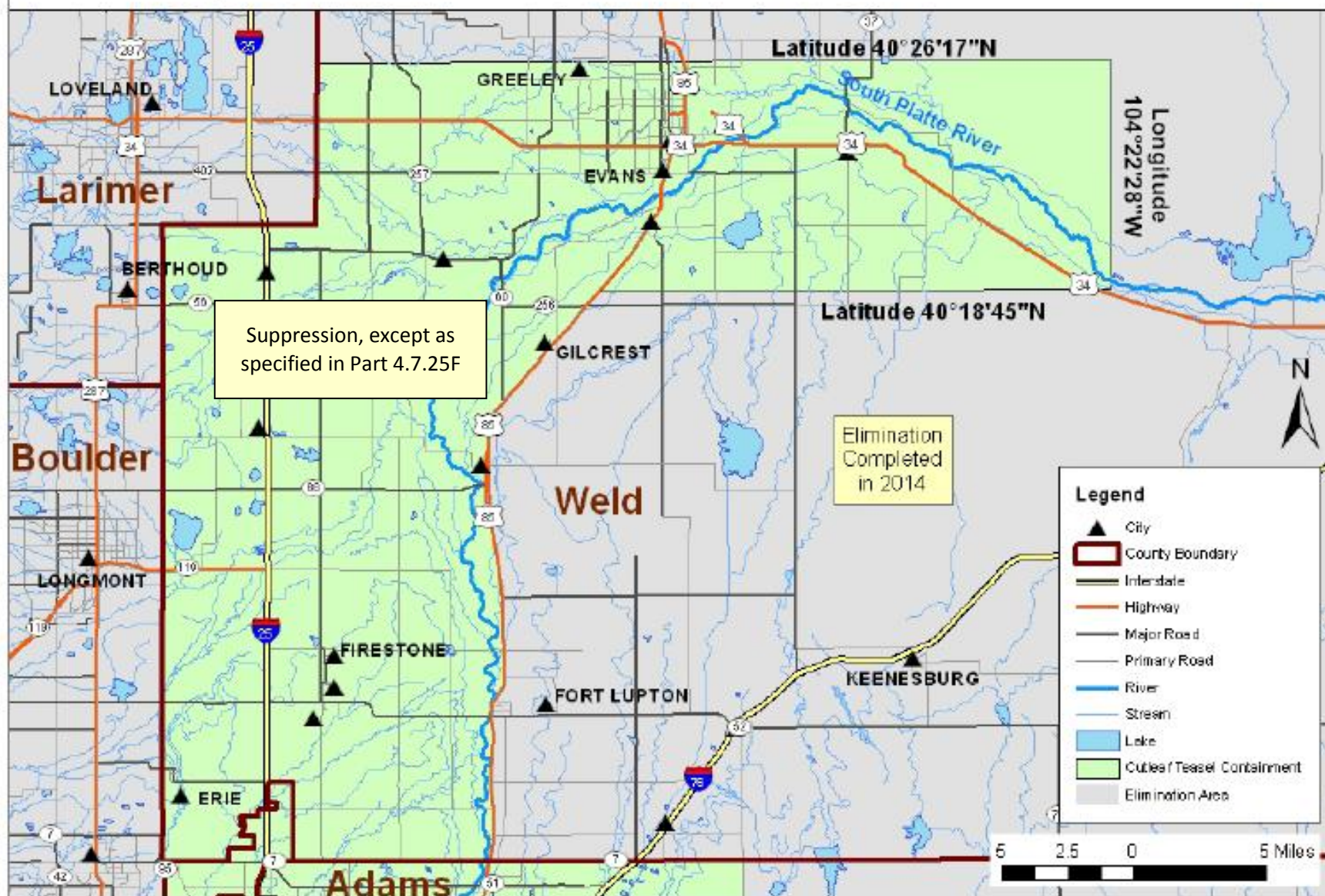
Figure 234



Cutleaf Teasel *Dipsacus laciniatus*

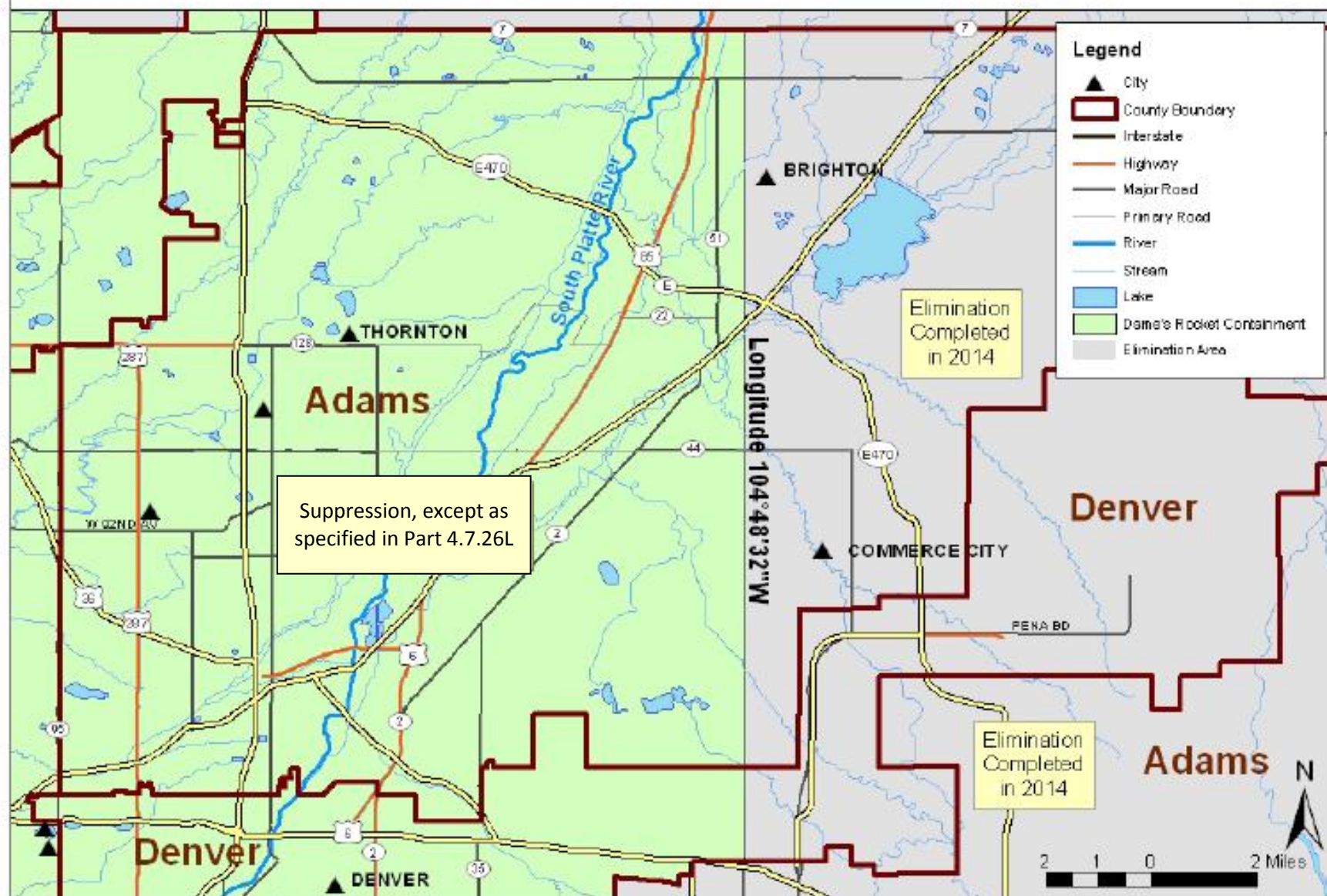
Weld County

Figure 235



Dame's Rocket *Hesperis matronalis* Adams County

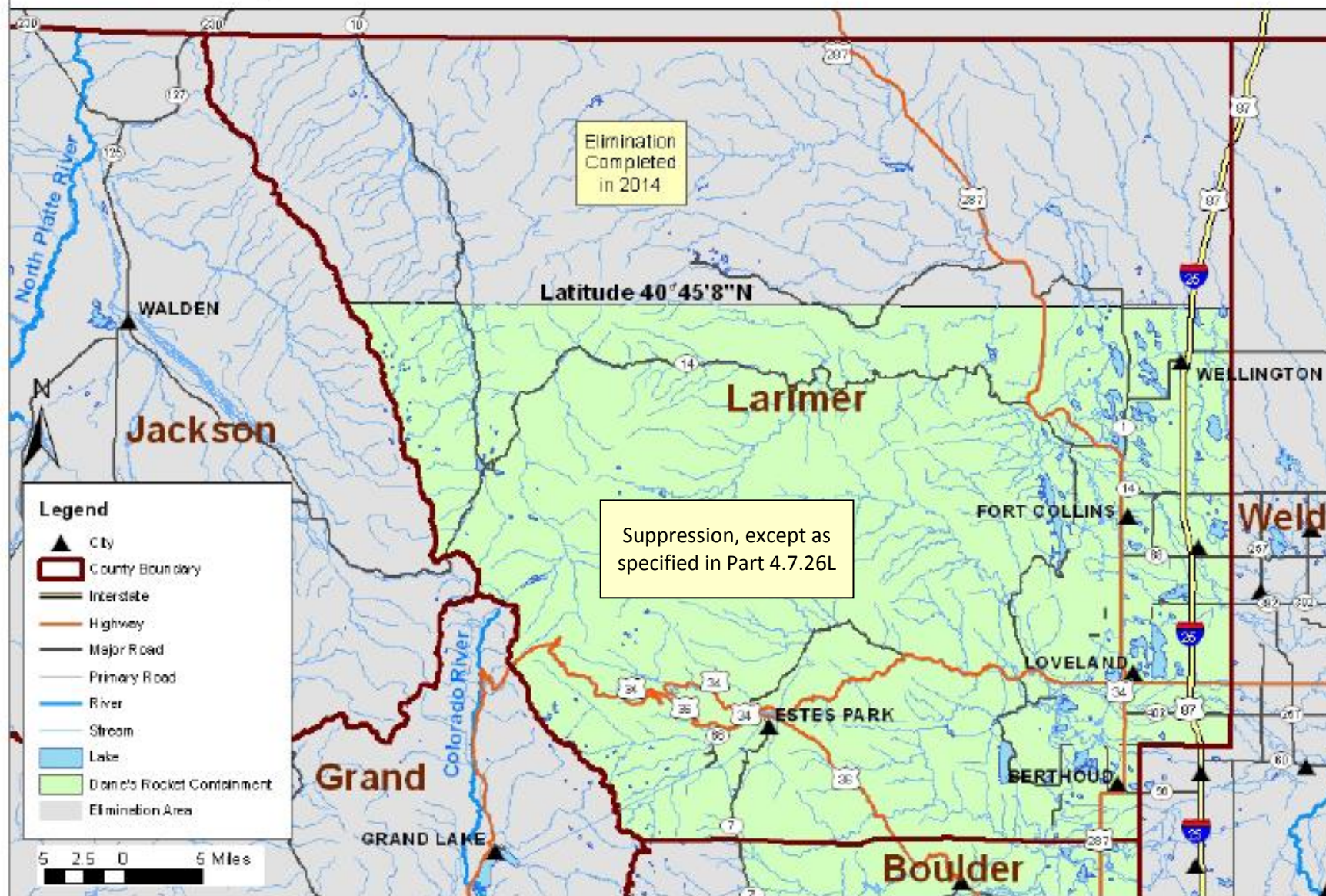
Figure 236



Dame's Rocket *Hesperis matronalis*

Larimer County

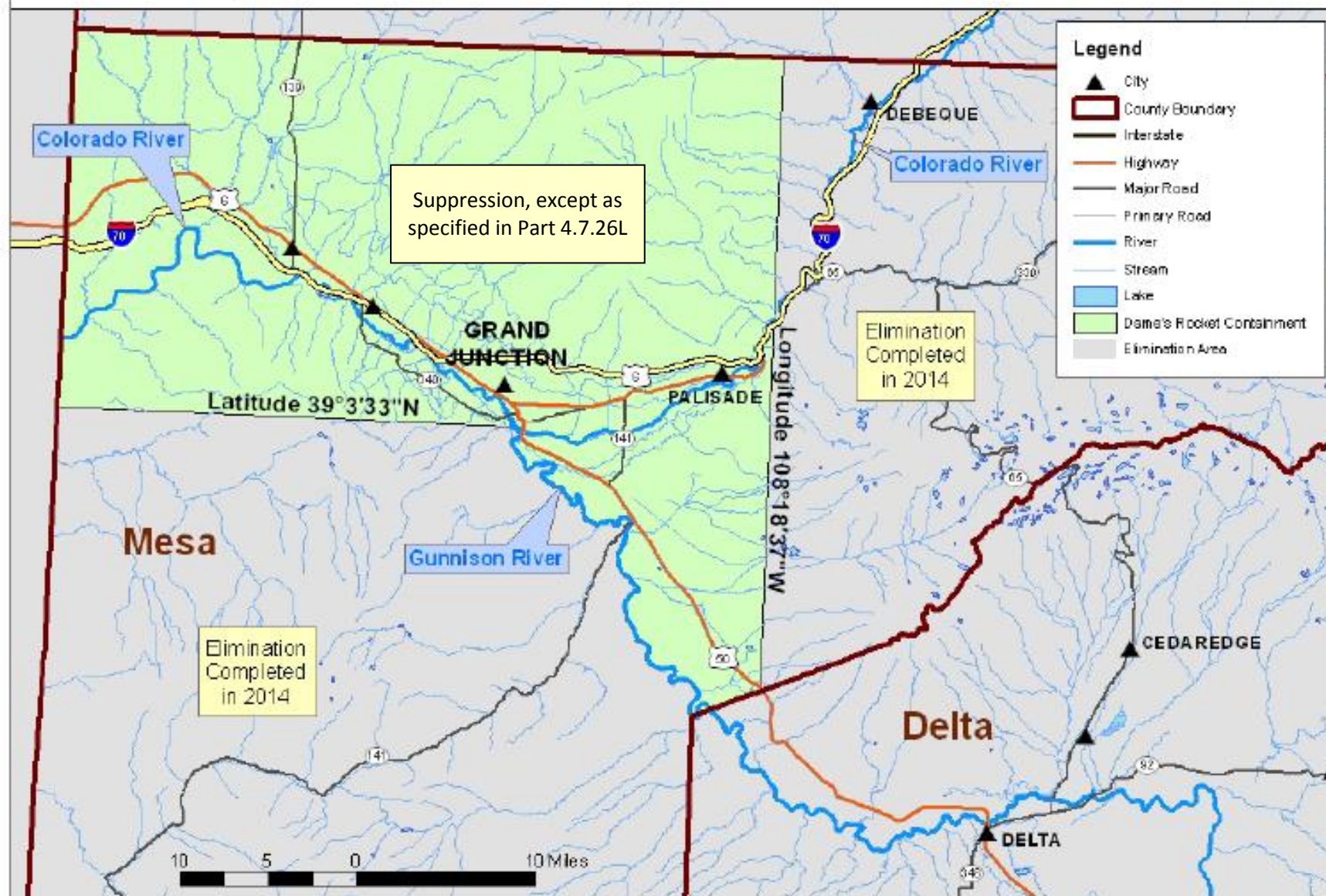
Figure 239



Dame's Rocket *Hesperis matronalis*

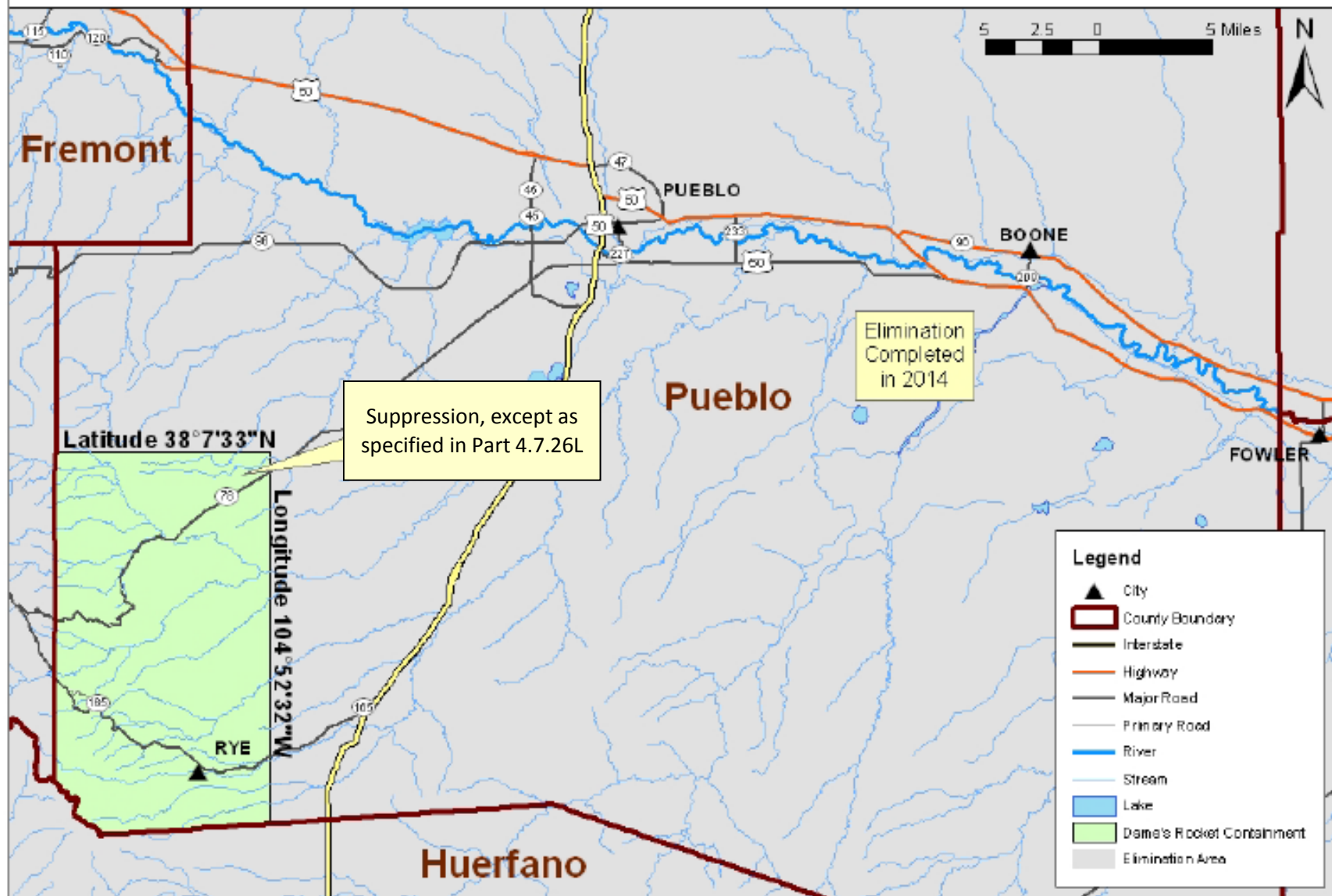
Mesa County

Figure 240



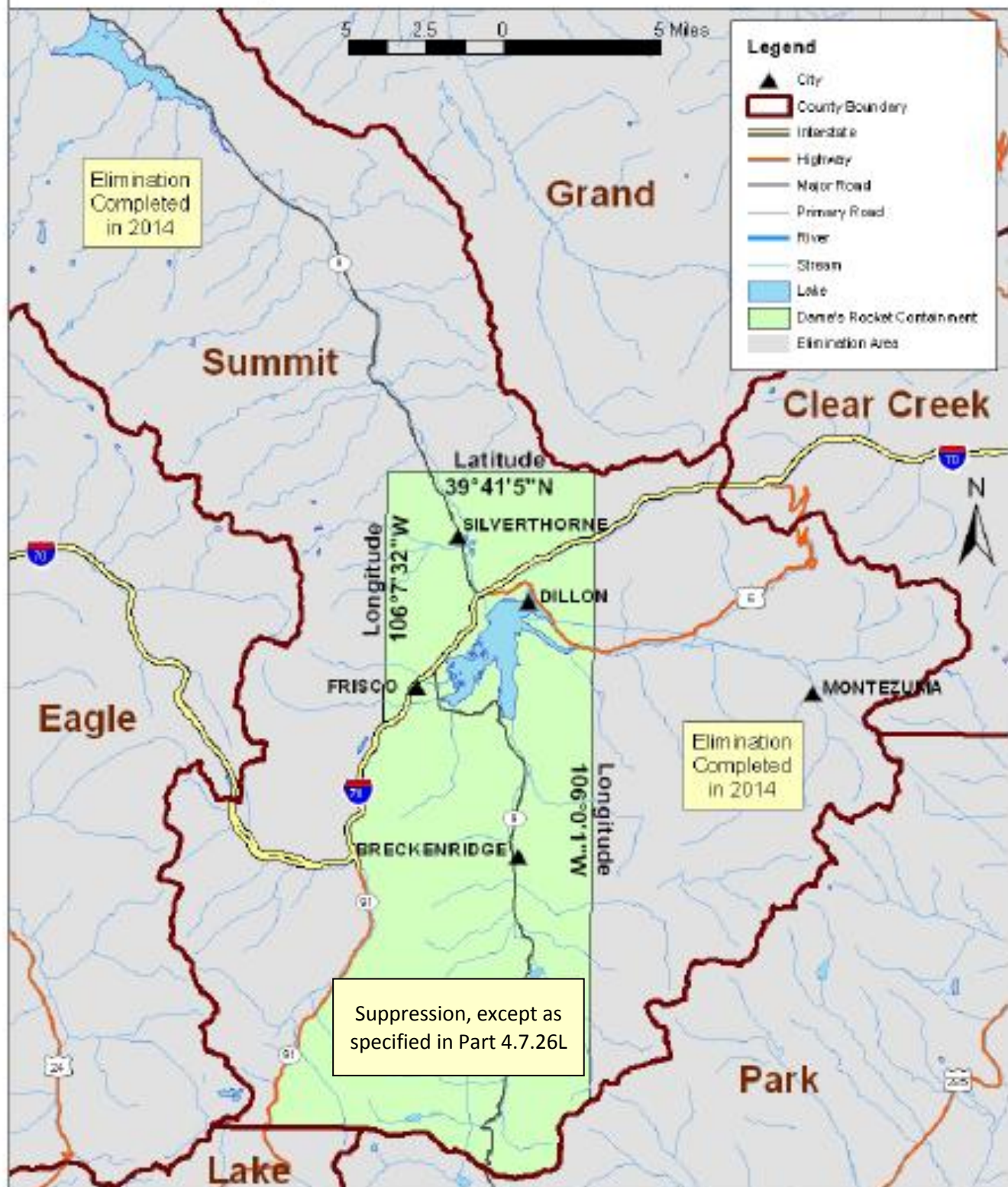
Dame's Rocket *Hesperis matronalis*
Pueblo County

Figure 241



Dame's Rocket *Hesperis matronalis*
Summit County

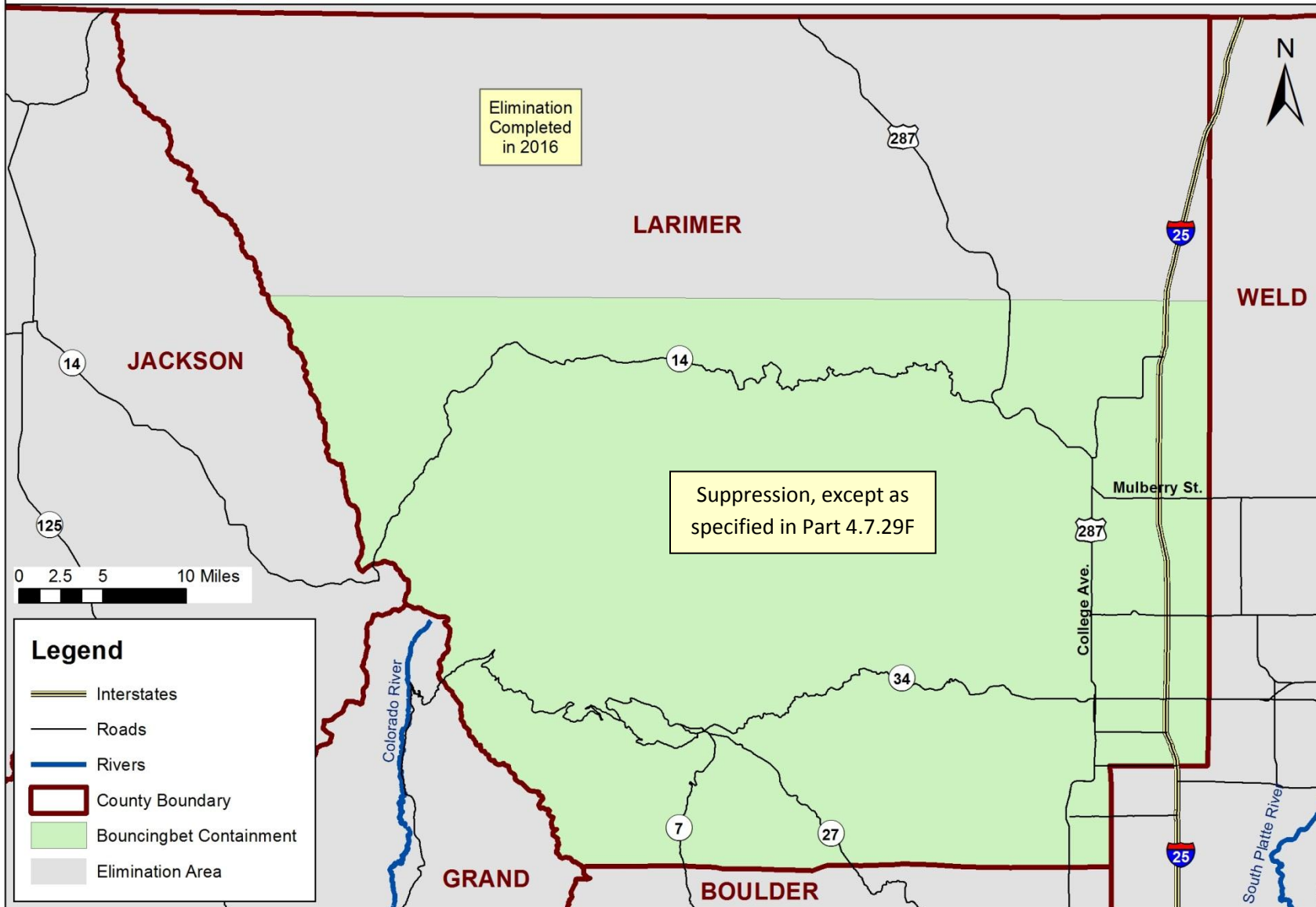
Figure 242



Bouncingbet (*Saponaria officinalis*)

Figure 259

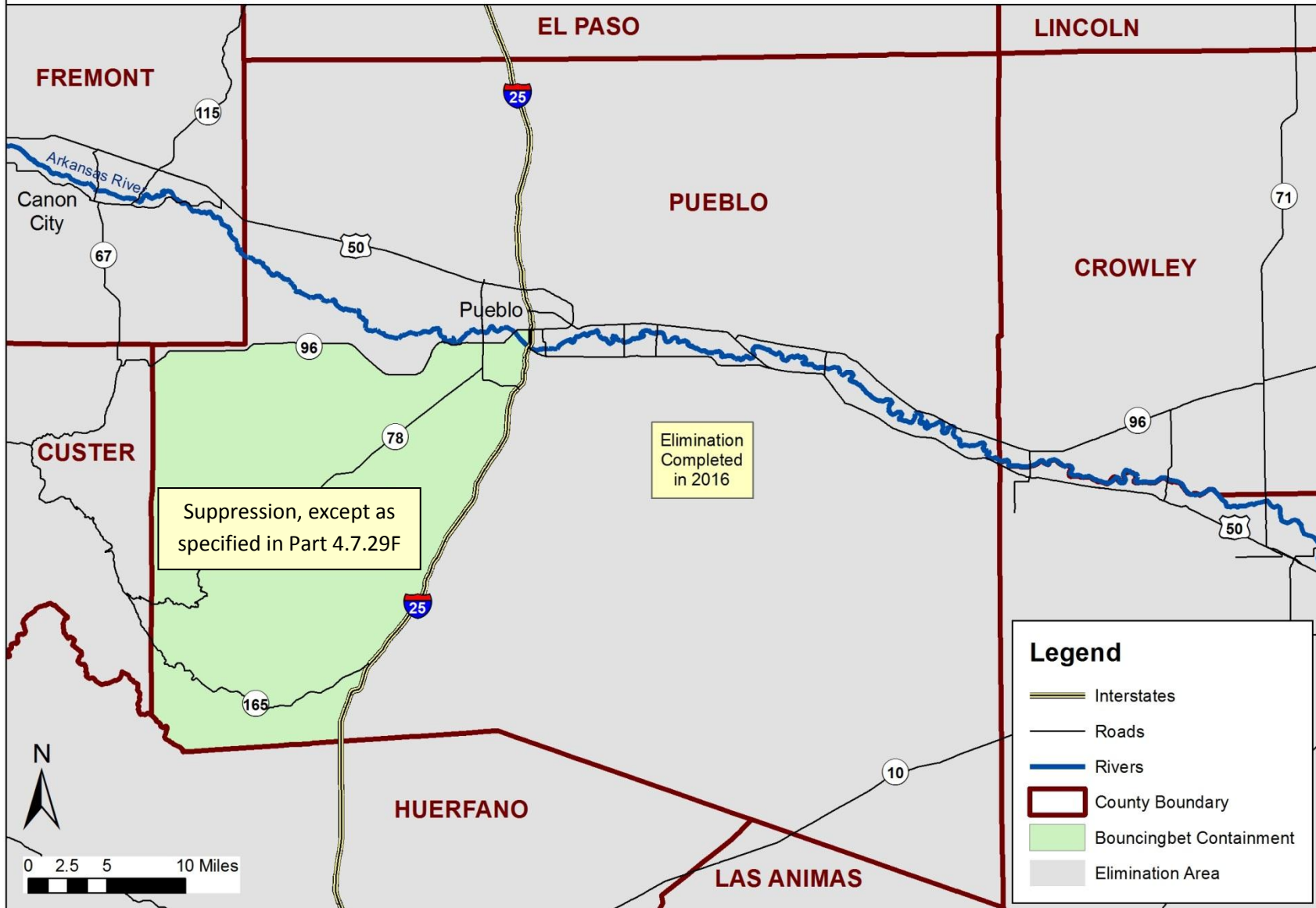
Larimer County



Bouncingbet (*Saponaria officinalis*)

Figure 260

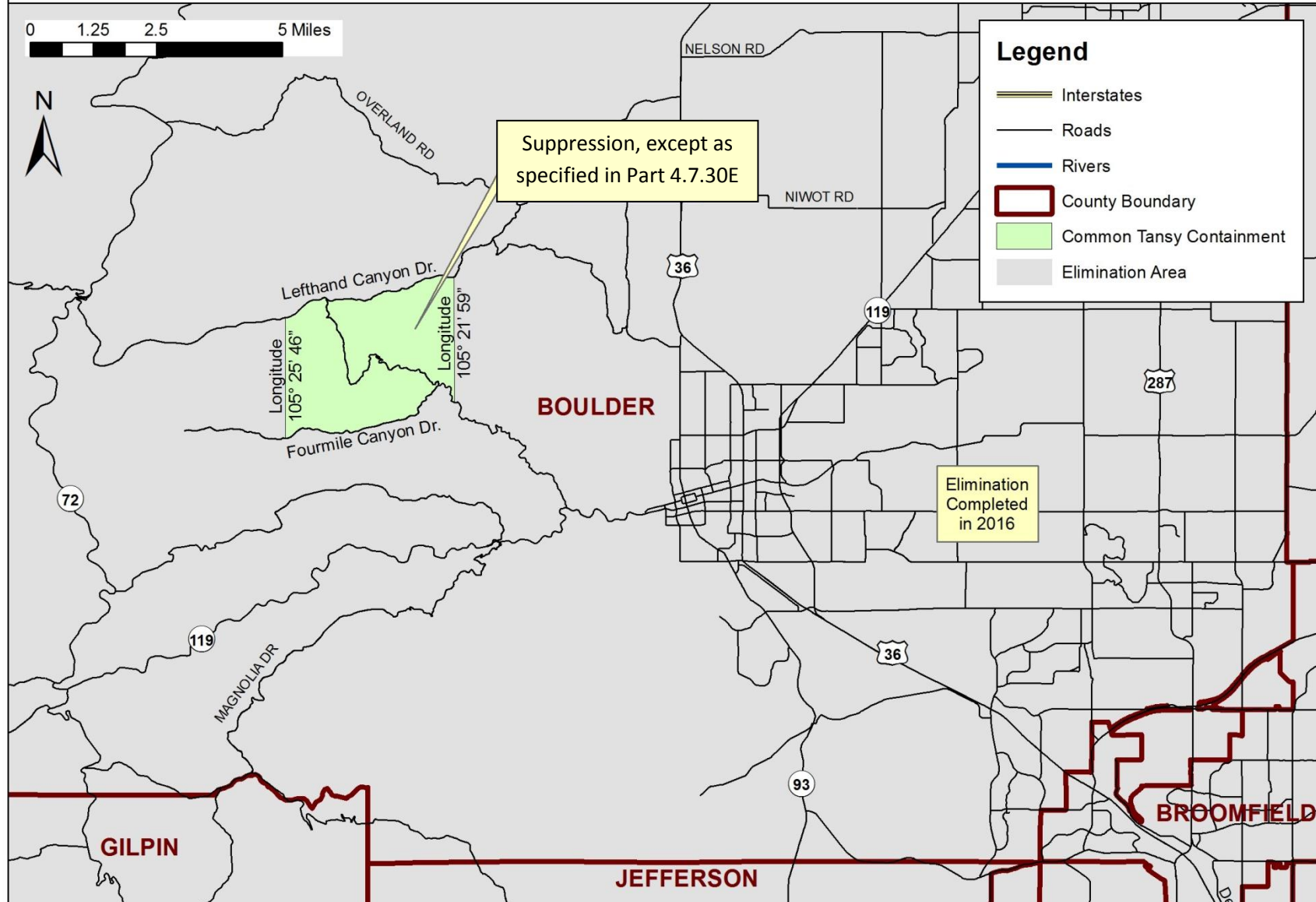
Pueblo County



Common Tansy (*Tanacetum vulgare*)

Figure 261

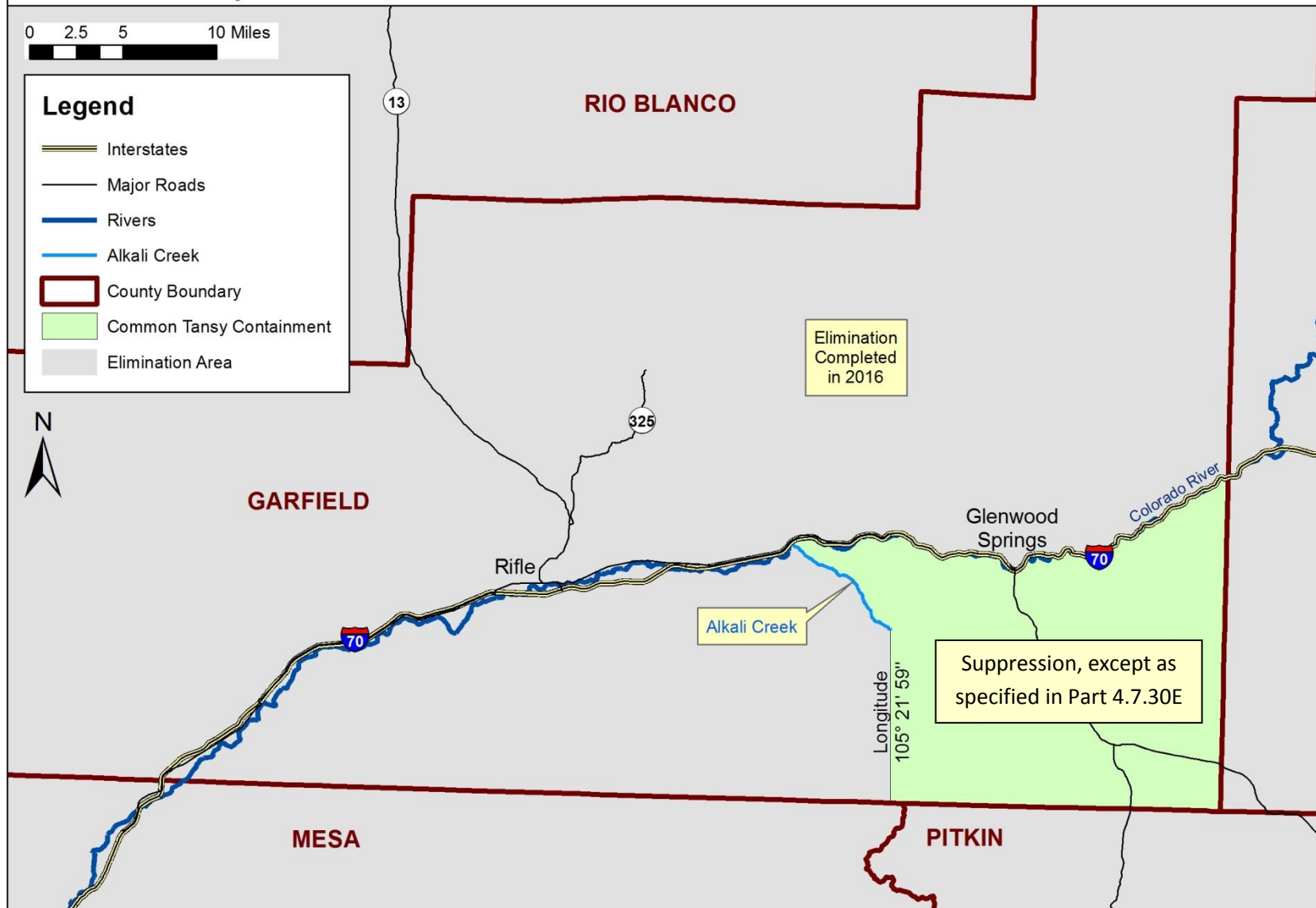
Boulder County



Common Tansy (*Tanacetum vulgare*)

Figure 262

Garfield County



Wild Caraway (*Carum carvi*)

Figure 264

Larimer County

